

NOTE

## A spinal column malformation in the creolefish *Paranthias colonus* (Osteichthyes: Serranidae)

Jesús Rodríguez-Romero<sup>1\*</sup>, Leonardo Cárdenas<sup>2</sup>, Juan Carlos Pérez Urbiola<sup>1</sup>, Roxana Hinohuye Rivera<sup>1</sup> and Mario Alberto Silva Hernández<sup>1</sup>

<sup>1</sup> Centro de Investigaciones Biológicas del Noroeste, S.C. Apdo. Postal 128, La Paz, B.C.S.

<sup>2</sup> CICIMAR- Instituto Politécnico Nacional. Apdo. Postal 592, La Paz, B.C.S.

\* E-mail: jrodri@cibnor.mx

Received 13-XII-2000. Corrected 21-V-2001. Accepted 25-X-2001.

**Key words:** *Paranthias colonus*, creolefish, spinal column malformation.

A creolefish, *Paranthias colonus* Hildebrand, with deformities in the spinal column, was captured at Isla Espíritu Santo, B.C.S., México (24°35' N; 110°24' W). The specimen is in the ichthyological collection of the Centro de Investigaciones Biológicas del Noroeste (CIBNOR) in La Paz, B.C.S. (#CIB1300). The spinal column has v-shaped lardosis in two positions (Fig. 1). One starts at the vertebra 18 and the second at the vertebra 20. Secondary effects include a reduction in size of vertebrae 18 and 19, and a bend and thickening of the neural and haemal spines on vertebra 19.

We found no reference to this type of malformation in *P. colonus*. In our judgement, the malformation is a genetic alteration occurring during the ontogenetic development, which did not prevent the fish from reaching full size.

### ACKNOWLEDGMENTS

We thank CIBNOR for the financial support for the project: Structure and ecology of fish of Isla Espíritu Santo B.C.S., México.

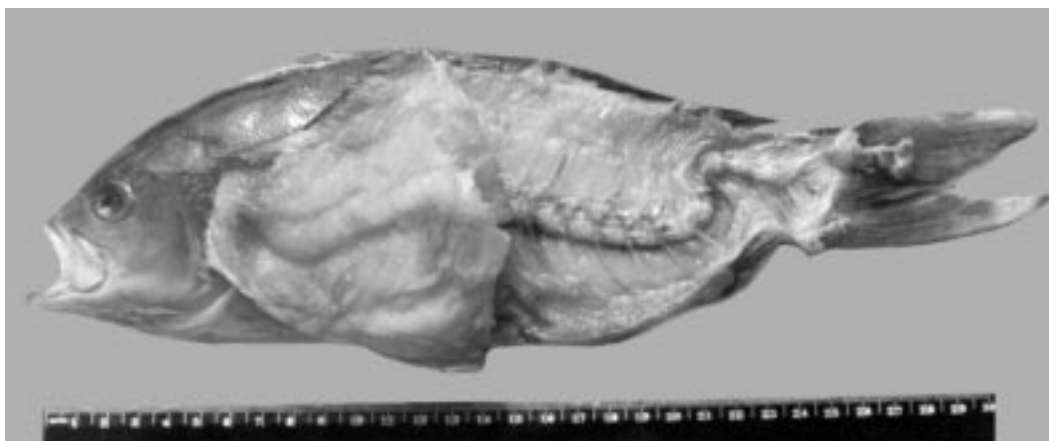


Fig. 1. Malformed vertebral column in the creolefish *Paranthias colonus*.