

FORMAT SAMPLE

Please follow the format of this sample when preparing your next manuscript draft. Important format aspects appear in the yellow boxes, but you can check all norms in the online authors guide at the journal web site.

Title is in **bold**; for plants family is included (for animals, use Order: Family).

Abundance and microhabitat use by the frog *Platymantis hazelae* (Anura: Ceratobatrachidae)

Lilibeth A. Bucol¹ & Abner A. Bucol^{*2}

Authors' names are spelled out, family name is at end of name in all cases and addresses are numbered, *not* marked with asterisks except for correspondence author only in cases where the correspondence author is not the first on the list.

1. Negros Oriental State University, Dumaguete City, Philippines; lilibethabs2013@gmail.com

2. Silliman University Angelo King Center for Research & Environmental Management (SUAKCREM), Dumaguete City, Philippines; abnerbucol2013@gmail.com

* Correspondence

The address ends in “;” and is immediately followed by email address (the word “email” is not included).

Abstract. Introduction: Forest frogs that undergo direct development (no tadpole stage) rely heavily on moist microhabitats for their survival. **Objective:** To describe the abundance and microhabitat use and some aspects of the breeding behaviour of the threatened forest frog *Platymantis hazelae* at Twin Lakes Balinsasayao Natural Park, Negros Island, Philippines. **Methods:** From September 2016 to February 2017, we surveyed *Platymantis hazelae* using 27 (400 m²) plots in Twin Lakes Balinsasayao-Danao Natural Park in Negros Oriental, Philippines. **Results:** After a total of six months survey *P. hazelae* was found abundant in the montane zone with mean density ranging from 30.56±6.94 to 86.11±15.65 ind./ha. Fourteen environmental variables were measured and subjected to multivariate principal component analysis (PCA). PCA revealed that rainfall, altitude, relative humidity, and air temperature influenced the density of *P. hazelae*. Screw pines (*Pandanus*) leaf axils and leaves (51.56 %) and palm leaves (14 %) were the preferred microhabitats for the species. Details of physical characters of embryos and froglets are also described. **Conclusions:** *P. hazelae* was found abundant in higher elevations (sub-montane and montane zones) where ambient temperature was generally lower, higher rainfall and relative humidity and microhabitats (e.g. screw pines) remain intact and abundant.

“**Abstract:**” and every section title in the new abstract format are written in **bold** lower case and followed immediately by a summary of objective, methods, results and main conclusions; all in a single paragraph.

Key words: anuran; lowland; montane; *Pandanus*; phytotelmata; *Platymantis hazelae*; submontane.

Include 5-7 general subject words, in lower case and separated by semicolon.

Total words: 6449

The total word number of the document is included at the end of the first page.

The genus *Platymantis* is highly diverse, with 45 known species found in the Philippines, Palau, Fiji, New Guinea, and in the Admiralty, Bismarck, and Solomon Islands (Brown, Siler, Richards, Diesmos, & Cannatella, 2015; amphibiaweb.org). In the Philippines, dozens of newly discovered species, including many members of *Platymantis*, await formal description (Brown & Diesmos, 2009). Diesmos, Alcala, Siler, and Brown (2014) recently summarized many of these discoveries (e.g., *P. biak* Siler, Diesmos, Linkem, Diesmos, and Brown, 2010 from the karst forest of central Luzon) and a new phylogenetic hypothesis has been proposed for this group (Brown et al., 2015).

Citations are in parentheses, starting with the oldest and ending in the newest, and separated only by commas. No commas are used between name and year.

Two author citations are written with “&”,

Same author and same publication year should use an alphabetic designator in the year.

When using APA the first time you reference a cite all the author’s must be written, after that you can use et al.

Platymantis is a direct developer (i.e., without tadpole stage). Alcala, Alcala, and Dolino (2004) and Alcala and Alcala (2005) studied the population densities of lowland forest herpetofauna, with emphasis on threatened species such as *Platymantis spelaeus* Brown & Alcala, 1982 (endemic to the karst habitats of Southwestern Negros) and *P. insulatus* Brown & Alcala, 1970, endemic to small islands (Islas de Gigantes) off Northern Iloilo. The most recent ecological study involving *Platymantis* and the importance of their microhabitats as “thermal buffers” included the series of papers by Scheffers, Brunner, Ramirez, Shoo, Diesmos, and Williams (2013a) and Scheffers, Phillips, Laurance, Sodhi, Diesmos, and Williams (2014) on Mt. Banahaw, Luzon Island. These works demonstrated the very specific arboreal microhabitat use of *Platymantis montanus* (Taylor, 1922), a species demonstrated to be a very close relative of *P. hazelae* (Brown et al. 2015). Alcala (1962) conducted extensive observations on the breeding behaviour of Philippine frogs (including *Platymantis hazelae* Taylor, 1920), including life history and microhabitat use (e.g. leaf axils of screw pines), as well as oviposition sites; he also provided morphological description of the species’ embryos and froglets. *P. hazelae* has been

known as nocturnal, sexually dimorphic (males slightly smaller, 21.8-28.2 mm SVL, with vocal sacs; females 26.2-5.2 mm SVL), and juveniles below 20 mm SVL (Alcala, 1962).

The importance of phytotelmata (water bodies held by terrestrial plants) has been emphasized by a number of studies (Alcala, 1962; Ferreira, Schineider, & Teixeira, 2012; Kitching, 2000; Lehtinen, 2002; Scheffers et al. 2013a, 2014; Domingos, Arantes, Cavalcanti, & Jotta, 2015). A number of Philippine frog species have been documented to utilize leaf axils of screwpines (*Pandanus*) as breeding sites, such as *P. hazelae* and *P. negrosensis* (Alcala, 1962) and *Pleophryne brevipes* (Alcala & Brown, 1982; Denzer, 1994). Scheffers et al. (2013a) described the importance of phytotelmata to act as thermal buffers during extreme climatic conditions. Frogs that are dependent on phytotelmata may be otherwise subject to desiccation, contributing to Alcala, Bucol, Diesmos, and Brown (2012) classification of these species as “highly vulnerable”. The goal of this paper was to describe the abundance and spatio-temporal distribution of *P. hazelae* based on a six-month survey during the rainy season (September 2016 to February 2017) in three forest zones (montane, sub-montane, and lowland). We also described some aspects of the species’ breeding behaviour and characters of embryos and developing froglets.

MATERIALS AND METHODS

Study site: The forests surrounding the Twin Lakes of Balinsasayao (Fig. 1) and Danao in Negros Oriental, Philippines, form part of an extensive tropical rainforest ecosystem within the 133 000 half the geothermal reserve of the Energy Development Corporation (formerly Philippine National Oil Company, PNOC). The area has an elevation range of ~650-900 m.a.s.l. near the lakes and extends to about 1 750 m.a.s.l. at the highest peak known as “Guinsayawan” towards the Southwest. A dome-shaped peak known as “Guintabon” is adjacent to the lakes in the North. A third, much smaller water body, known as “Kabalin-an” Lake, located Northwest of Guintabon has a maximum water surface area reaching ~3.4 ha in 2014 but reduced to only ~1.3 ha during low rainfall months, notably right after the El Niño phenomenon in 2010.

Geographic coordinates are written exactly in this abbreviated way:
(10°44'13" - 11°00'37" N and 85°34'48" - 85°58'51" W).

Three study zones were pre-determined based on the general description by Brown and Alcala (1961). The geographic coordinates of selected study zones are as follows, montane zone (10°44'13" - 11°00'37" N & 85°34'48" - 85°58'51" W), submontane zone (9°22'7.85" N & 123°11'9.92" E), and lowland zone (9°22'20.78" N & 123°11'19.00" E). In each zone, three sites were selected (where possible with minimal signs of human activities) and marked using a GPS unit. In each site, three replicate plots of 20 x 20 m were established, each corner marked with a flagging tape. The montane zone (> 1 300 m.a.s.l.) included in this study is located at the Guinsayawan peak (Fig. 2A). This site requires ~4-5 h of uphill climb along the trails at the top of ridges. The forest at this zone is typically composed of trees growing on steep slopes mixed with laurels (Lauraceae) and other small to medium sized trees, and in most locations, the presence of screw pines (*Pandanus*) and *Heterospatha* palms. Although the trail continues towards the summit of Guinsayawan, sampling at > 1 300 m elevation was not undertaken, due to safety concerns. All plots in this zone were marked from the trail (top of the ridge) towards the

Northwest side of the terrain, which has a gentler slope compared to the opposite side of the ridge. The submontane zone is located at the foot of Mt. Guintabon. The slope in this site is gentle but is characterized by the presence of large volcanic boulders (Fig. 2B). The three selected sites in this zone are 200 to 400 m from each other. Large trees with diameters at breast height of > 30 cm and height of > 20 m include the “almaciga” (*Agathis philippensis*) while the remaining vegetation is comprised of small trees (e.g. Lauraceae), tree ferns (e.g. *Sphaeropteris glauca* and *Cyathea negrosiana*), abaca (*Musa textilis*), and wild banana or “pakol” (*Musa* sp.). The lowland zone is characterized by steep slope (> 30°) with native forest trees growing on steep ravines and slopes (Fig. 2C). The slope in this zone is gentle and characterized by the presence of large volcanic boulders. Conspicuous trees in this site are *Acacia mangium* (a reforested species), and a combination of patches of native trees (e.g. *Shorea* spp.), abaca (*Musa textilis*), and *Ficus* species (Moraceae) growing on large boulders (~2 m in height).

Subheadings are in bold, with colon, and immediately followed by text.

Frog abundance and distribution: Upon establishment of sample plots, a team of six people carefully searched for individuals of *Platymantis hazelae*, with efforts to minimize disturbance to frog microhabitats. Four people were assigned to go into each plot to search, count, and capture frogs; the other two researchers remained outside the plots (Dodd, 2016) to record temperature and relative humidity data and receive captured frogs. To avoid counting the same frog, all collected frogs were placed in plastic bags and after counting and examining them (sexing was made seeing males vocal sacs and the size, females are generally larger and age class, juvenile or adult SVL < 20 mm considered juveniles), all were released back to their original microhabitats.

Because *Platymantis hazelae* is nocturnal (Alcala, 1962), sampling was undertaken on a monthly basis, from 5-11pm (5-10 nights/month). Adult males are easily distinguished by their distinct advertisement calls. It should be pointed out that in *Platymantis*, only male frogs produce advertisement calls and that females lack vocal sacs (Alcala & Brown, 1998). Additionally, each species has a distinct male call, which has been used by frog taxonomists as a source of diagnostic characters (Brown & Diesmos, 2009; Diesmos, Brown, Alcala, Sison, Afuang, & Gee, 2002; Siler, Linkhem, Diesmos, & Alcala, 2007).

Untis use the DECIMAL METRIC SYSTEM

Important examples:

8 kg - (space between number and unit)

1 200 - (write thousands with a space instead of comma or period)

5.6 m - (use period for decimals, not comma)

58 % - (space before the % sign)

Environmental variables: Within each plot we measured 14 environmental variables, tree density, tree DBH, canopy cover, leaf litter mass, leaf litter depth, amount of rainfall, air temperature, fern height, fern density, relative humidity, altitude, tree height, density of palms, and screw pines (Table 1). Tree height was visually estimated by a trained research staff member while diameter at breast height (DBH) of each tree was measured using a tape measure. Tree density was expressed as the total count of individual trees (> 5 cm DBH) per plot and canopy cover was assessed using Ocular (Visual) Estimation Method, expressed in percent cover. Elevation was determined using a hand-held GPS unit (Garmin). Rainfall was monitored per site weekly or right after heavy rain downpour by a local assistant using an improvised rain gauge

(10 cm wide cylinder). Air temperature and relative humidity (RH) as well as temperature and RH of each microhabitat during each frog survey within plots were taken using a digital hygrometer (model #HC 520) with an external temperature probe. Air temperature was measured using data loggers (HOBO Temp/Light pendant logger, UA-002-64) deployed in each sampling site. Data loggers were launched using the accompanying HOBO software through ONSET Universal Optic-USB Base Station (Model, BASE-U-4). Data logging was set to record every 80 min interval for about 140 d period.

Data processing and analyses: To estimate abundance, count data were expressed as individuals per plot (ind./ha), is also presented for easier comparison with other studies done in the study area (e.g. Brown & Alcalá, 1961; Amoroso, Alcalá, & Alcalá, 2014 unpublished report). Because this study surveyed permanent plots throughout the survey period (6 months), a two-way Analysis of Variance (ANOVA) with repeated measures was used. Using `nortest` and `lmtest` packages in R (R Core Team, 2015), tests were performed to determine normality of data (Anderson-Darling test and Q-plot), normality of residuals (plotted studentized residuals), as well as homoscedasticity (Breusch-Pagan test) and presence of outliers. Values were $\log(x+1)$ -transformed prior to analysis to meet parametric assumptions of ANOVA.

The relationship between abundance of *P. hazelae* and the environmental variables was visualized using the Principal Component Analysis (PCA). The use of PCA was necessary to address the multicollinearity (i.e., high variance inflation factor > 5) detected among the predictor variables (Domingos, Arantes, Cavalcanti, & Jotta, 2015). PCA plot was generated using the `ggbiplot` package in R platform (R Core Team, 2015). Interpretation of PCA was based on eigenvalues and projected inertia (%) using the `ade4` package (Dray & Dufour 2007). Prior to multicollinearity test and subsequently PCA, data were $\log(x+1)$ transformed to address the presence of zeros (e.g. zero count of frog) in the dataset (Zar, 1999).

Section headings (MATERIAL AND METHODS, RESULTS, DISCUSSION, etc.) are not in bold: they are written in upper case.

RESULTS

Abundance and spatio-temporal distribution: *Platymantis hazelae* was found only in the submontane and montane zones (Fig. 3). The species was not found in the lowland sites, despite intensive search efforts over six months. In the submontane zone, the species was limited to only one site (Site 1) with densities ranging from 2.78-13.89 ind./ha. In the montane zone, the species was consistently encountered at 30.56-86.11 ind./ha (± 15.65 SE; $N = 56$). Most individuals of *Platymantis hazelae* found were males, except in November (montane zone), December, and February (submontane zone) (Fig. 4). Juveniles of *P. hazelae* were observed only in November (montane zone) although outside of the study plots, eggs and embryos of this species were found in *Pandanus* leaf axils along the trail going to Guinsayawan (montane zone). Females of *P. hazelae* were rarely found, often only detected when pairs were found together.

Acá simplemente estamos usando $N = 56$ (estamos usando N mayúscula para número de muestra)

Figuras se citan por separado: En vez de (Fig. 1, 2 y 3A) debe ser así (Fig. 1, Fig. 2 and Fig. 3A)

Frog abundance and distribution: Table 1 presents the ranges of environmental variables measured during the study (Table 1). When subjected to principal component analysis (PCA), among the 14 environmental variables, rainfall, altitude, relative humidity, were positively correlated with density of *P. hazelae* (Fig. 5). Similarly, Two-Way ANOVA with repeated measures over six months on relative humidity (RH) indicated a $P < 0.05$ for zone, indicating that zone significantly affect local humidity. However, month did have a significant effect (d.f. = 5, $F = 15$, $P < 0.001$), which indicates that the humidity levels recorded at various months are significantly different ($SS = 459.72$, $df = 5$, $F = 15$, $P < 0.001$). In addition, we detected a significant interaction between zone and month ($SS = 271.32$, d.f. = 10, $F = 27.13$, $P < 0.001$), suggesting that the relationship between month and RH depends on the identity of the area (zone) sampled (Table 2). Air temperature appears negatively correlated with the above-mentioned variables. A Two-Way ANOVA with repeated measures, over six months, with air temperatures as the dependent variable indicated no significant effect of zone ($P > 0.05$), indicating that zones did not have different air temperatures. Month of sampling did have a significant effect ($SS = 41.42$, d.f. = 5, $F = 11.84$, $P < 0.001$), which indicates that statistically detectable air temperatures varied monthly. We also found a significant interaction effect between zone and month ($SS = 25.13$, d.f. = 10, $F = 2.73$, $P < 0.001$), suggesting that the air temperatures differentially vary in response to the source of variation studied here (area [zone] versus date of sampling effort [month]).

The word Figure is abbreviated to “Fig.”; “Table” starts with upper case.

Our temperature data (late September 2016 to early February 2017) includes 6 843 observations (~2 300 each; Fig. 6) taken at 80 min interval for about 140 days. Lowland air temperatures ranged from 18.71 to 29.85 °C (mean = 22.31 °C) and submontane forest ranged from 17.28 to 27.96 °C (mean = 20.65 °C). As expected, among the three zones, high elevation montane forest exhibited the lowest temperature ranging from 14.61 to 20.42 °C (mean = 18.71 °C). Variation in air temperature and relative humidity (Fig. 7, Fig. 8) indicate that mean air temperatures ranged from 16.6 ± 0.2 to 23.7 ± 0.6 °C, while mean RH ranged from 83.3 to 97.9 %. These data indicate the uniqueness of both lowland and montane sites demonstrate that the submontane site was intermediate in ranges of variation detected over our 140 day sampling effort. With increasing elevation, we note a decline in air temperature and the submontane zone exhibited wide variance in temperature, which contrasted sharply with the montane zone, which consistently remained at or slightly below 20 °C.

Write temperatures in this format: 27.5 °C.

The number of individuals (total counts for each zone) varied among months (10-64 ind.), with highest counts either in submontane or montane zones (Fig. 9). *Platymantis hazelae* was restricted to the submontane and montane zones, but this species has been known take place > 200 m.a.s.l. within its known range. As shown in figure 8, the highest count per site was recorded in the montane zone during month of high rainfall (Fig. 8). Rainfall was unaffected by zone ($P = 0.227$), but was significantly influenced seasonally. The interaction effect between these two variables was significant ($SS = 18.5$, d.f. = 10, $F = 3.871$, $P < 0.001$), suggesting that

the relationship between month and rainfall depends on the zone sampled (Table 3). Average monthly rainfall ranged from 0.28-5.69 mm/hr, peaks of which were recorded in the montane zone from October to December 2016.

Microhabitat use: *Platymantis hazelae* was found mainly in arboreal microhabitats, ranging from ~0.5 m to 5 m above the ground. Of the 64 individuals observed, 51.56 % were found in leaf axils and surfaces of screw pines (*Pandanus* spp.), while 14.06 % were found on surfaces of palm fronds (*Heterospathe* sp.), 10.94 % were found on tree ferns (e.g. *Cyathea negrosiana*), 3 % were found on *Musa* (wild bananas, abaca) leaf axil/leaves, 4.69 % were found among low-hanging (0.5-1 m above the ground) tree leaves, and 4.69 % were found on tree buttresses, and 10.94 % were found on shrubs (Fig. 10). *Platymantis hazelae*, like all Philippine Shrub Frogs is mainly arboreal, but was occasionally found on lower vegetation strata, occasionally in the same microhabitats as *P. dorsalis*, a terrestrial species, which appears scansorial in the montane zone. In this study, *P. hazelae*, was most frequently encountered in their preferred microhabitats (leaf surfaces and axils of *Pandanus*), except during periods of high precipitation, especially in the montane zone, where they were found more frequently among ground vegetation (erect fern fronds), from near ground level to ~5 m above the ground.

Oviposition and froglets: During surveys performed on January 20th, 2017 (~7 pm), a male calling from a hanging coiled abaca (*Musa textiles*) leaf was documented by our local field assistant (E. Zosima) ~0.5 m above the steep slope in the submontane sampling site. Upon inspection, the individual was sitting on top of an egg clutch (Fig. 11), containing six developing embryos, with completely developed operculum and vascularized abdominal sacs, indicating that the clutch was approximately 30 days old (Alcala, 1962). It is noteworthy that all clutches were attached on vertical or inclined surfaces that never accumulate excess water (Fig. 11A). More study, however, is needed to confirm our initial observations. Eyes and abdominal buds were already conspicuous during this stage (Fig. 11, Fig. 12C, Fig. 12D). This clutch hatched on February 05-07, 2017 (Fig. 11E, Fig. 11F). Diurnal observations on an additional three egg clutches of varied developmental stages (found on January 29, 2017 at Mt. Guinsayawan), however, did not include male attendance of clutches. Along existing trails, we also checked for possible egg clutches laid in *Pandanus* leaf axils. In about 1 km walk along the trail, we found two clutches of varying stages laid in inclined *Pandanus* leaf axils, one newly laid (about blastula stage, with 8 embryos) and another clutch with four embryos having well-developed abdominal sacs. Interestingly, one clutch found in November 2016 that was laid on top of a fallen log, about 1.5 m above the ground, remain undeveloped.

Developed embryos were observed moving their appendages while inside egg capsules. On February 05, 2017 the head of one of the froglets emerged (Fig. 12E) but remained motionless and on the following day was completely freed from the egg capsule (Fig. 12F). On February 07, 2017 all froglets were found outside of the egg capsules. Upon emerging from the egg capsule, these froglets had transparent integuments (Fig. 12G), especially on the ventral side and lower limbs. When provided access to standing water, they readily immersed themselves in petri dishes of water.

Metamorphosed froglets were cream colored with blackish patches on lateral body surfaces, and dorsum with longitudinal whitish line at mid-dorsal line from tip of snout to lumbar region and the rest of body covered with white speckles. Posterior to axillary region shows with dark blotch. Upon release, one fully metamorphosed froglet quickly jumped, attached itself on

leaf surfaces and eventually concealed within a leaf axil of *Pandanus*. At Mt. Guinsayawan, we also observed fully metamorphosed froglets, either on *Pandanus* leaf surfaces or immersed in rainwater contained in leaf axils during daytime (Fig. 12I). During sampling in November 2016, juveniles (Fig. 12J) with reddish brown warts and overall yellowish coloration were also observed (probably foraging) at night on surfaces of palm and shrub leaves. These juveniles were found roughly 2-5 m away from calling males.

DISCUSSION

It should be pointed out that unlike the previous studies (e.g. rapid assessments on frog abundance by Amoroso et al. (2014), which relied only on male calls), this study quantified frog abundance by intensive searches within repeatedly visited study plots. Our abundance data are based on subjects either captured or directly observed by investigators. We consider our data more comprehensive, compared to previous surveys involving only counts of males detected by advertisement calls and multiplied by the factor of 2 (assuming 1:1 sex ratio), which Alcala and Alcala (2005) suggested might result in overestimating the actual number of individuals.

Platymantis hazelae was found only in the submontane and montane zones and was not encountered in lowland sites, despite intensive search for 6 months. In the submontane zone, this species was limited to only one site (Site 1) with densities ranging from 2.8 to 13.9 ind./ha. In the montane zone, density was estimated at 30.6-86.1±15.65 ind./ha (Fig. 3). When compared with published data from half a century ago (Brown & Alcala, 1961), our estimates were 1.5-10 times lower than previous estimates. During that time period, the forest condition on Cuernos de Negros mountain was still in pristine condition (A. Alcala, personal communication, April 25, 2019). However, comparisons with our study and that of Brown and Alcala (1961) should be taken with caution because their study site was located about 10 km from our study area.

The distribution of *P. hazelae* in this study and its abundance in the three forest zones were found consistent with the findings by Brown and Alcala (1961). For example, with the combined quadrat and cruising surveys, Brown and Alcala (1961) observed *P. hazelae* was more abundant in the submontane and montane forest zones. Most of *P. hazelae* encountered in this study were males, except in November (montane zone), December, and February (submontane zone). Juveniles of *P. hazelae* were observed only in November (montane zone) although outside of the study plots, eggs and embryos of this species were found in *Pandanus* leaf axils along the trail going to Guinsayawan (montane zone). It appears that females of *P. hazelae* were rarely encountered, often detected when pairs were found. It is possible that the paucity of encounters of females may relate to later emergence or lower detectability of non-vocalizing subjects.

It should be noted that values for temperatures were slightly lower (14-31 °C) compared to the values reported in other mountain areas (habitats of phytotelmata-associated *Platymantis* species in the Philippines such as in Mt. Banahao, Luzon by Scheffers et al. (2013a). Most relative humidity values recorded in this study were larger than 75 %, different from the ones reported by Scheffers (2013) that detected a wider range (40-100 %) in Mt. Banahao. Rainfall has been shown to influence survivorship and activities (e.g., breeding, calling) of phytotelmata-associated frogs (Summers & McKeon, 2004). As expected, this study observed high densities of *P. hazelae* during months of high rainfall in montane and submontane habitats.

In Philippine mountains, screw pines, especially *Pandanus*, are most abundant at high elevation, from ~1 000 m to 2 000 m.a.s.l. (Brown & Alcala, 1961; Alcala, 1962) and we recorded densities ranging from 35 ind./400 m². Despite their importance, understory vegetation

such as *Pandanus* and palms are rarely reported or published. Lehtinen (2002) surveyed the herpetofauna (e.g. frogs and lizards) associated with *Pandanus* but did not quantify density or abundance of this plant except mentioning that a total of 1 700 plants in their study area of at least 457 ha in the coastal or littoral forest in Madagascar. *Platymantis hazelae* utilized mainly leaf axil and screwpines surfaces (*Pandanus*), usually below 3 m from the ground (but juveniles were observed closer to the ground; 0.1-0.8 m; and were often seen hiding in *Pandanus* axils containing water). These observations are consistent with those of Brown and Alcalá (1961) and Alcalá (1962). Lehtinen (2002) enumerated several species of amphibians and reptiles that utilize *Pandanus* as their microhabitats. As documented in this study, the abundance of *P. hazelae* appears correlated with the quantity (or availability) of arboreal (but lower stratum) habitats such as screwpines (*Pandanus*), areal ferns, wild abaca, and palms. Alcalá (1962) observed the species' use of these microhabitats as breeding habitats.

Juveniles and developing embryos of *P. hazelae* were found during the months of October 2016 through February 2017, in contrast to an earlier study by Alcalá (1962) in which embryos were found from March to July, suggesting a prolonged breeding period. Given the known development period of *P. hazelae* embryos of ~50 d (Alcalá, 1962), the single clutch found in the submontane zone that successfully hatched on February 05-07, 2017 was probably laid in early to middle of December 2016, during which prolonged heavy rainfall was observed. In this study, four to eight embryos were observed per clutch, about the same size clutch reported by Alcalá (1962).

This study described in detail variation in abundance, macrohabitat type, and microhabitat use in *P. hazelae*, based on a six-month survey (September 2016-February 2017) in three major forest zones (montane, submontane, and lowland) within the Twin Lakes Balinsasayao Natural Park. Apparently, this species is uncommon at low elevations, and was undetected despite intensive search during the duration of the survey. Its absence in the lowland might be attributed to absence of potential microhabitats such as screwpines (*Pandanus*) and palms. While we documented a male sitting on top of an egg clutch, suggesting male-guarding behaviour, there is a need to conduct more observations. Observations of its breeding behavior suggest an extended embryonic period. We also noted dependence of newly metamorphosed juveniles on phytotelmata microhabitats.

Acknowledgments are brief and only people who provided significant assistance is included. No titles (Dr., Mr., Mss., etc.) are used.



ACKNOWLEDGMENTS

We thank the Department of Science and Technology for funding the study as part of the first author's MSc thesis. The Department of Environment and Natural Resources (DENR) and the rest of the Protected Area Management Board (PAMB) of Balinsasayao-Danao Natural Park is acknowledged for allowing the researchers to conduct this study. Our local assistants especially to E. Zosima and his sons Ephraem and Michael, N. Bucol, and R. Abing are deeply thanked for participating the fieldwork. R. Mier and the rest of the staff of Balinsasayao-Twin Lakes People's Organization (BTLPO) and the Zosima family are also appreciated for welcoming us

during fieldwork. A. C. Alcala is thanked for providing valuable advice and ideas. Comments and suggestions provided by R. Brown greatly improved the earlier version of this manuscript.

RESUMEN ←

The *Resumen* (Spanish *Abstract*) has the same structure of the *Abstract*, but should be briefer. If you are not fluent in Spanish, journal staff will translate it from your English *Abstract*.

Abundancia y uso de microhabitat por parte del sapo *Platymantis hazelae* (Anura: Ceratobatrachidae). **Introducción:** las ranas de bosque que se desarrollan directamente (sin etapa de renacuajo) dependen en gran medida de los microhábitats húmedos para sobrevivir. **Objetivo:** describir la abundancia y el uso de microhábitats y algunos aspectos del comportamiento reproductivo ante la amenaza de la rana del bosque *Platymantis hazelae* en el Parque Natural Twin Lakes Balinsasayao, Isla Negros, Filipinas. **Métodos:** de septiembre 2016 a febrero 2017, examinamos *Platymantis hazelae* utilizando 27 parcelas (400 m²) en el Parque Natural Twin Lakes Balinsasayao-Danao en Negros Oriental, Filipinas. **Resultados:** Después de un muestreo total de seis meses, se encontró que *P. hazelae* era abundante en la zona montañosa, con una densidad media que oscila entre 30.56±6.94 y 86.11±15.65 ind./ha. Catorce variables ambientales se midieron y se sometieron a un análisis de componentes principales multivariantes (PCA). El PCA reveló que la lluvia, la altitud, la humedad relativa y la temperatura del aire influyeron en la densidad de *P. hazelae*. Los microhábitats preferidos para la especie fueron las axilas foliares y hojas (51.56 %) y las hojas de palma (14 %). También se describen los detalles de los caracteres físicos de embriones y ranas. **Conclusiones:** *P. hazelae* se encontró abundante en elevaciones más altas (zonas sub-montanas y montanas) donde la temperatura ambiente fue generalmente más baja, las precipitaciones y la humedad relativa más altas y los microhábitats (por ejemplo, screwpines) permanecen intactos y abundantes.

Palabras clave: anuro; tierras bajas montano; *Pandanus*; phytotelmata; *Platymantis hazelae*; submontane.

PLEASE CHECK APA FORMAT (6th EDITION) for journals, magazines, books, books chapter, thesis, congress, etc

All references are included in the document and are arranged in alphabetical order, and secondly, in chronological order from the oldest.

Alcala, A. C. (1962). Breeding behavior and early development of frogs of Negros, Philippine Islands. *Copeia*, 4, 679-726.

Alcala, E. L., & Alcala, A. C. (2005). Aspects of ecology and threats to the habitats of three endemic herpetofaunal species on Negros and the Gigante Islands, Philippines. *Silliman Journal*, 46, 169-194.

Alcala, A. C., & Brown, W. C. (1982). Reproductive biology of some species of *Philautus* (Rhacophoridae) and other Philippine anurans. *Kalikasan*, 11(2-3), 203-226.

Journal name is followed by volume in italics, issue number between parentheses, comma, space and page numbers.

Alcala, A. C., & Brown, W. C. (1998). *Philippine Amphibians. An Illustrated Field Guide*. Quezon City, Philippines: Bookmark Inc.

For all publications other than journals, include publisher, city, state, province and/or country.

Alcala, A. C., Bucol, A. A., Diesmos, A. C., & Brown, R. M. (2012). Vulnerability of Philippine amphibians to climate change. *Philippine Journal of Science*, 141(1), 77-87.

Alcala, E. L., Alcala, A. C., & Dolino, C. N. (2004). Amphibians and reptiles in tropical rainforest fragments on Negros Island, the Philippines. *Environmental Conservation*, 31, 254-261.

Amoroso, V., Alcala, E., & Alcala, A. (2014). Inventory, biodiversity assessment, and monitoring in Twin Lakes Balinsasayao-Danao Natural Park (A Progress Report, 10p.).

Brown, R. M., Siler, C. D., Richards, S., Diesmos, A. C., & Cannatella, D. C. (2015). Multilocus phylogeny and a new classification for Southeast Asian and Melanesian forest frogs (family Ceratobatrachidae). *Zoological Journal of the Linnean Society*, 174, 130-168.

Brown, W. C., & Alcala, A. C. (1961). Populations of amphibians and reptiles in the submontane and montane forests of Cuernos de Negros, Philippine Islands. *Ecology*, 42(4), 628-636.

Denzer, W. (1994). Tree hole breeding in the toad *Pelophryne brevipes* (Peters, 1867). *Amphibia-Reptilia*, 15(2), 224-226.

Diesmos, A. C., Alcala, A. C., Siler, C. D., & Brown, R. M. (2014). Status and conservation of Philippine amphibians. In H. Heatwole & I. Das (Eds.), *Conservation Biology of Amphibians of Asia* (pp. 310-336). Malaysia: Natural History Publications.

A chapter in a book or symposium memoir is indicated exactly as in this example. Chapter pages appear after editors' names, with period and "In" (without italics) and names in standard order (family named is not placed before surname) and finally, "(Eds.)".

Diesmos, A. C., Brown, R. M., Alcala, A. C., Sison, R. V., Afuang, L. E., & Gee, G. V. (2002). *Philippine amphibians and reptiles, an overview of species diversity, biogeography, and conservation. Philippine biodiversity conservation priorities, a second iteration of the National Biodiversity Strategy and Action Plan*. Philippines: University of the Philippines.

Domingos, F. M. C. B., Arantes, I. C., Cavalcanti, D. R., & Jotta, P. A. C. V. (2015). Shelter from the sand, microhabitat selection by the bromelicolous tree frog *Scinax cuspidatus* (Anura, Hylidae) in a Brazilian restinga. *North-Western Journal of Zoology*, 11, 27-33.

Dray, S., & Dufour, A. B. (2007). The ade4 package, implementing the duality diagram for ecologists. *Journal of Statistical Software*, 22(4), 1-20.

Elinson, R. P. (2013). Metamorphosis in a frog that does not have a tadpole. *Current Topics in Developmental Biology*, 103, 259-276.

Author initials should be written with spaces

Ferreira, R. B., Schineider, J. A., & Teixeira, R. L. (2012). Diet, fecundity, and use of bromeliads by *Phyllodytes luteolus* (Anura, Hylidae) in southeastern Brazil. *Journal of Herpetology*, 46(1), 19-24.

Kitching, R. L. (2000). *Food webs and container habitats, the natural history and ecology of phytotelmata*. Cambridge University Press.

Lehtinen, R. (2002). The use of screw pines (*Pandanus* spp.) by amphibians and reptiles in Madagascar. *Herpetological Bulletin*, 82, 20-25.

Narayan, E. J., Hero, J. M., Christi, K. S., & Morley, C. G. (2011). Early developmental biology of *Platymantis vitiana* including supportive evidence of structural specialization unique to the Ceratobatrachidae. *Journal of Zoology*, 284(1), 68-75.

R Core Team. (2015). R: A language and environment for statistical computing. R Foundation for Statistical Computing, Vienna, Austria. URL, <http://www.R-project.org/>

Scheffers, B. R. (2013). *A quantitative assessment of arboreality in tropical amphibians across an elevation gradient, can arboreal animals find above-ground refuge from climate warming?* (Doctoral dissertation). National University of Singapore, Singapore.

When citing one author several times, use letters and order by date and number of authors.

Scheffers, B. R., Brunner, R. M., Ramirez, S. D., Shoo, L. P., Diesmos, A., & Williams, S. E. (2013a). Thermal buffering of microhabitats is a critical factor mediating warming vulnerability of frogs in the Philippine biodiversity hotspot. *Biotropica*, 45(5), 628-635.

Scheffers, B. R., Phillips, B. L., Laurance, W. F., Sodhi, N. S., Diesmos, A., & Williams, S. E. (2013b). Increasing arboreality with altitude, a novel biogeographic dimension. *Proceedings of the Royal Society of London B, Biological Sciences*, 280(1770), 1581.

Scheffers, B. R., Phillips, B. L., & Shoo, L. P. (2014). *Asplenium* bird's nest ferns in rainforest canopies are climate-contingent refuges for frogs. *Global Ecology and Conservation*, 2, 37-46.

Siler, C. D., Diesmos, A. C., Linkem, C. W., Diesmos, M., & Brown, R. M. (2010). A new species of limestone-forest frog, genus *Platymantis* (Amphibia, Anura, Ceratobatrachidae) from central Luzon Island, Philippines. *Zootaxa*, 2482, 49-63.

Siler, C. D., Linkhem, C. W., Diesmos, A. C., & Alcala, A. C. (2007). A new species of *Platymantis* (Amphibia, Anura, Ranidae) from Panay Island, Philippines. *Herpetologica*, 63(3), 351-368.

Summers, K., & McKeon, C. S. (2004). The evolutionary ecology of phytotelmata use in Neotropical poison frogs. In R. M. Lehtinen (Ed.), *Ecology and Biology of Phytotelm-breeding Anurans* (No. 193, pp. 55-73). Miscellaneous Publications Museum of Zoology, University of Michigan.

Zar, J. H. (1999). *Biostatistical Analysis* (4th Edition). New Jersey: Prentice Hall.

INTERNET REFERENCES (APA)

Author. Year as written in the page. Title of the web page. Responsible Institution (date when you downloaded the information, and http address; not in a separate section).

Thomas, G.M. 2000. Bio- Dap. A biodiversity analysisPackaged (Downloaded: may 1, 2009, <http://nhsbig.inhs.uiuc.edu/www/populations.html>).

TABLE 1

Average values of 14 environmental variables measured in each site in the three forest zones. A, B, and C are sites for each zone

Environmental variables	Lowland			Submontane			Montane		
	A	B	C	A	B	C	A	B	C
1. Air temperature (°C)	22.60	21.94	21.74	21.26	21.59	22.08	18.96	18.51	18.38
2. Relative humidity (%)	87.58	90.85	86.96	87.52	89.93	88.80	95.21	96.59	94.22
3. Elevation (m.a.s.l.)	655	700	780	953	930	900	1350	1330	1300
4. Rainfall (mm/hr)	0.49	0.5	0.47	0.73	0.69	0.72	3.17	3.15	2.8
5. Leaf litter wt. (kg)	1.42	0.50	0.79	0.99	1.65	1.14	1.39	1.73	1.42
6. Leaf litter depth (cm)	2.33	2.11	1.74	2.83	2.42	3.03	2.89	3.25	2.67
7. Tree DBH (cm)	10.26	19.46	23.44	21.89	17.98	19.10	20.76	14.07	15.73
8. Tree density (ind./400m ²)	21.67	11.67	10.00	35.00	62.33	62.00	43.00	29.33	29.33
9. Tree height (m)	8.06	11.86	15.03	14.57	16.70	16.53	14.85	12.95	15.03
10. Fern height (cm)	88.57	59.36	41.04	63.78	36.28	23.84	21.67	26.67	47.50
11. Canopy cover (%)	28.33	31.67	41.67	73.33	83.33	85.67	50.50	65.00	65.00
12. Pandanus (ind./400m ²)	1.00	0.00	0.67	15.00	7.00	5.00	10.00	8.33	32.33
13. Fern density (fronds/m ²)	21.00	13.33	15.33	34.00	20.33	15.33	4.00	8.00	10.10
14. Palm (ind./400m ²)	1.67	0.00	0.67	10.00	4.33	9.00	18.00	26.67	33.33

Elevation: Lowland (655-780 m.a.s.l.); Submontane (900-953 m.a.s.l.); and Montane (1 300-1 350 m.a.s.l.)

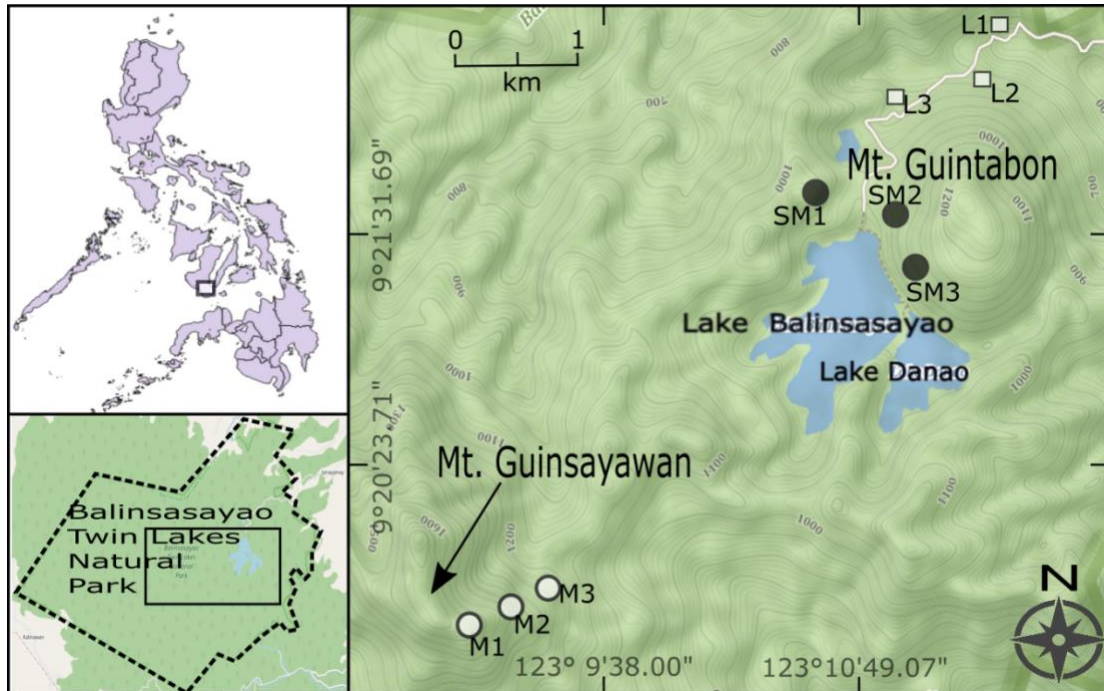


Fig. 1. Location of the study sites within Balinsasayao Twin Lakes Natural Park (montane sites indicated by M1-M3, submontane sites by SM1-SM3, and lowland sites by L1-L3). Inset: Philippine map and the boundaries of Balinsasayao Twin Lakes Natural Park. Map generated using QGIS® and OpenStreetMap®.

Photographs must be attached as separate JPG or TIFF (100 % quality compression) files. They must have a high resolution quality. There is a simple quality check that you can do: enlarge them in your screen. If they still look well, then they will probably be acceptable. Remember that normal figures will be reduced to a width of 6-12 cm: label lettering must be easy to read even after that reduction.

Tables and figures must be placed at its correspondent location inside the article text (NOT AT THE END OF THE DOCUMENT)