



Genetic resistance to *Ceratocystis fimbriata* in elite genotypes of *Gmelina arborea*¹

Resistencia genética a *Ceratocystis fimbriata* en genotipos élite de *Gmelina arborea*

Dawa Méndez-Álvarez², Yorlenny Badilla-Valverde², Olman Murillo-Gambo², Rafael Ferreira Alfenas³

¹ Reception: November 2nd, 2022. Acceptance: February 13th, 2023. The work is part of a Ms. thesis, “Determinación de tolerancia en genotipos de *Gmelina Arborea* a la enfermedad marchitez del *Ceratocystis*”.

² Instituto Tecnológico de Costa Rica, Escuela de Ingeniería Forestal. P.O. Box: 159-7050 Cartago, Costa Rica. damendez@tec.ac.cr (corresponding author, <https://orcid.org/0000-0002-7586-5485>); ybadilla@tec.ac.cr (<https://orcid.org/0000-0002-6743-9734>); omurillo@tec.ac.cr (<https://orcid.org/0000-0003-3213-8867>).

³ Universidade Federal de Viçosa, Department of Phytopathology, 36570-900, Viçosa, Minas Gerais, Brazil. rafael.alfenas@ufv.br (<https://orcid.org/0000-0003-3675-9003>).

Abstract

Introduction. In Costa Rica, an incidence of nearly 40 % has been reported for a disease caused by *Ceratocystis fimbriata* in commercial plantations of *Gmelina arborea* (melina), which is the second most widely planted forest tree species in the country. Consequently, there is a pressing need to explore genetic material that exhibit resistance to this pathogen. **Objective.** To evaluate two methods of *C. fimbriata* inoculation and their effect on elite genotypes of melina, for their use within the melina genetic improvement program at the international forest genetic improvement cooperative GENFORES. **Materials and methods.** A pathogenicity test was established using the CIF 001 isolate of *C. fimbriata* under greenhouse conditions, in Santa Clara, San Carlos, Costa Rica. Two inoculation methods were evaluated in five elite genotypes from October 2019 to January 2020. The effect of the pathogen was evaluated by measuring total height development, basal diameter, number of leaves, incidence, and internal injury within the plant. The assessment was conducted at 30, 60, 90, and 120 days. **Results.** Mortality was observed from day 38 and reached an incidence of 26.7 % at 120 days. The treatment using solid medium displayed the highest incidence percentage. Genotypes 15N and 58 exhibited high susceptibility to the CIF 001 isolate, whereas genotypes 1 and 57 exhibited high tolerance. Based on the results, it was determined that the pathogenicity test of *C. fimbriata* on melina can be evaluated at 90 days. **Conclusion.** Solid medium was the most effective method for inoculating melina with *C. fimbriata* (isolate CIF 001). Evaluations showed the need to assess results at least 90 days after inoculation. Based on the analysis of the internal lesion, genotype 1 was identified as highly resistant to the effect of the pathogen. The inclusion of this genotype as an evaluation technique will substantially enhance the protocol for assessing tolerance to the pathogen.

Keywords: forest pathology, tropical diseases, genetic improvement, genetic resistance, clonal forestry.

Resumen

Introducción. En Costa Rica se reporta una incidencia de casi un 40 % de la enfermedad causada por *Ceratocystis fimbriata* en plantaciones comerciales de *Gmelina arborea* (melina), la segunda especie forestal más plantada en el



país. Por lo tanto, surge la necesidad de buscar material genético resistente a este patógeno. **Objetivo.** Evaluar dos métodos de inoculación de *C. fimbriata* y su efecto en genotipos élite de melina, para su uso dentro del programa de mejoramiento genético de melina en la cooperativa internacional de mejoramiento genético forestal GENFORES. **Materiales y métodos.** A partir del aislamiento CIF 001 de *C. fimbriata* se estableció un ensayo de patogenicidad bajo condiciones de invernadero en Santa Clara de San Carlos, donde se evaluaron dos métodos de inoculación en cinco genotipos élite durante octubre 2019 a enero 2020. Se valoró el efecto del patógeno en el desarrollo de altura total, diámetro basal, cantidad de hojas, incidencia y lesión interna en la planta. El ensayo se evaluó a los 30, 60, 90 y 120 días. **Resultados.** Se observó mortalidad a partir del día 38 y se alcanzó una incidencia de 26,7 % a los 120 días. El tratamiento con medio sólido presentó el mayor porcentaje de incidencia. Los genotipos 15N y 58 exhibieron una alta susceptibilidad al aislamiento CIF 001, mientras que los genotipos 1 y 57 manifestaron una alta tolerancia. Se determinó que la prueba de patogenicidad de *C. fimbriata* en melina, puede evaluarse a los 90 días. **Conclusión.** El tratamiento con medio sólido fue el método de inoculación más eficaz de *C. fimbriata* (aislado CIF 001) en melina. En ninguno de ellos se determinó un grado de resistencia a la enfermedad. El análisis de la lesión interna logró determinar al genotipo 1, como resistente al efecto del patógeno. Su incorporación como técnica de evaluación mejorará significativamente el protocolo de determinación de tolerancia al patógeno.

Palabras claves: patología forestal, enfermedades tropicales, mejoramiento genético, resistencia genética, silvicultura clonal.

Introduction

Disease-causing pathogens are more frequently reported in forest plantations, resulting in significant economic losses. The melina tree (*Gmelina arborea* Roxb: Lamiales: Lamiaceae) is the second most planted forest species in Costa Rica, covering 18 000 hectares according to the last agricultural census (Instituto Nacional de Estadística y Censos [INEC], 2015). Breeding efforts have been dedicated to this tree species in the region over the past 30 years, which has reported genetic gains in growth and yield of over 25-30 % (Ávila-Arias, Murillo-Cruz & Murillo-Gamboa, 2015; Ávila-Arias, Murillo-Cruz, Murillo-Gamboa & Sandoval, 2015; Espitia et al., 2016; Hernández Castro et al., 2021; Hernández-Castro et al., 2021a; 2021b).

In the country, Melina plantations have a high incidence of the disease commonly referred to as “trunk rot”. Since its initial appearance extensive research has been conducted to achieve better control and management of this disease (Arguedas et al., 2018; Murillo-Gamboa et al., 2016; Salas-Rodríguez et al., 2016; Wingfield & Robison, 2004). Currently, it is understood that the causal agent of this disease is the fungus *Ceratocystis fimbriata* Hell & Halst (Microascales: Ceratocystidaceae) sensu stricto (Méndez-Álvarez et al., 2020), commonly known as “Ceratocystis wilt”.

C. fimbriata is a saprophytic fungus found in soils and acts as a primary pathogen on both angiosperms and gymnosperms (Harrington et al., 2014). Its current distribution covers tropical, subtropical, and temperate regions worldwide (Holland et al., 2019). Considered one of the most aggressive soil pathogens, it can survive on the surface of a wound without penetrating the vascular tissue for 7 to 15 days and it can persist on wood fragments for up to 3 months (Cordero Vega, 2017). Species within the genus *Ceratocystis* classified based on their genetic diversity and geographic range, where *C. fimbriata* being placed in the Latin American clade (Argôlo Magalhães et al., 2016; Méndez-Álvarez et al., 2020).

The fungus *C. fimbriata* has been identified infecting at least 31 species in 14 economically significant families (Holland et al., 2019; Valdetaro et al., 2015). In other regions, it affects crops such as coffee, mango, and cocoa (Holland et al., 2019; Valdetaro et al., 2015) as well as forest species including *Gmelina arborea*, *Populus*

spp, *Tectona grandis* and *Eucalyptus* spp. (Ferreira et al., 2010; Valdetaro et al., 2019). In Costa Rica it has been observed in coffee, cacao, xanthosoma and melina forest plantations (Baker et al., 2003; Cordero Vega, 2017; Méndez-Álvarez et al., 2020; Thorpe et al., 2005).

Species within the genus *Ceratocystis* have several means of transmission and dispersal mechanisms, including by insects, wind, water, root grafts and pruning tools. They typically infect their host through entry wounds (Ferreira et al., 2010; Harrington et al., 2011; Holland et al., 2019). The symptoms caused by this pathogens include vascular wilt, exudation points, stem cankers and plant death (Al Adawi et al., 2014; Argôlo Magalhães et al., 2016; Harrington et al., 2011; Sanches et al., 2008). In Costa Rica, symptoms have been observed in melina plantations as early as 7 months of age (Arguedas et al., 2018).

High host specificity and geographic variation of the fungus has been demonstrated in several studies (Cordero Vega, 2017; Ferreira et al., 2011). Meneses Rojas (2008) suggesting that there maybe numerous undescribed cryptic species of the fungus, some of which could exhibit high specialization. Therefore, when conducting trials to identify *Ceratocystis* wilt resistant or tolerant plant material, it becomes necessary to work with isolates obtained from the specific host for accurate evaluation (Ferreira et al., 2011).

In the management of forest plantations, disease control has primarily relied on implementing good silvicultural practices, and preventive actions based on knowledge of risk factors (Desprez-Loustau et al., 2016). The use of synthetic fungicides has also been reported (ur Rehman et al., 2015). Currently, the effectiveness of disease protection in forest plantation depends on multidisciplinary collaboration and dynamic approaches such as good silvicultural management, use of biological control and resistant genotypes (Zhan et al., 2014; 2015).

With advancements in plant breeding programs, the selection of resistant or tolerant genotypes to pathogens has become an integral part of disease management strategies (Argôlo Magalhães et al., 2016; Snieszko & Koch, 2017). Therefore, the objective of this research was to develop and refine the protocol for inoculation of *C. fimbriata* and the evaluation of its effect on elite genotypes of melina, for using in the melina breeding program of the international forest breeding cooperative GENFORES.

Material and methods

Plant material

Melina (*Gmelina arborea*) elite genotypes 15N and 20, considered as highly susceptible materials to the disease caused by *Ceratocystis fimbriata*, were vegetatively propagated by cuttings from mini clonal gardens (Méndez-Álvarez et al., 2021). Additionally, genotypes 1, 57 and 58, known for their tolerance, according to previous field test evaluations were included (Méndez-Álvarez et al., 2021; Salas-Rodríguez et al. 2016). A total of 18 4-months-old plants (ramets) were produced from each clone in 6-liter pots with sterile peat as substrate to a height of approximately 60 cm at the facilities of International Forest Breeding Cooperative (GENFORES) on the campus of the Instituto Tecnológico de Costa Rica in Santa Clara, San Carlos, Costa Rica (10° 21' 15.78" N and 84° 30' 58.88" W). The location is situated at an altitude of 150 m.a.s.l., with an average annual temperature of 25.7 °C and an average annual precipitation of 3012 mm (Instituto Meteorológico Nacional, s.f.), with no dry season. The trial was established between October 2019 and January 2020, and a final destructive evaluation of the trial was conducted.

Inoculum production

The inoculum was produced based on the isolation CIF 001 of *C. fimbriata* from melina trees in Costa Rica (Méndez-Álvarez et al., 2020), according to the following experimental treatment: 1) solid treatment, where the

fungus was grown in Petri dishes with malt extract and yeast extract agar (MYEA) for 8 days at 25 °C. 2) liquid treatment, where one of the plates from treatment 1 was used, to which 15 ml of sterile distilled water was added and scraped with a sterile digralsky loop. The spore suspension was then filtered through sterile gauze, quantified in a Neubauer chamber, and diluted to a concentration of 2.5×10^6 spores/mL.

Pathogenicity test establishment

The test was conducted under completely enclosed greenhouse conditions with a zenithal opening. The greenhouse maintained an average temperature of 28 °C, an average relative humidity of 82.5 % and irrigation was provided once a day for 10 minutes. The trial followed a 3 x 5 factorial experimental design, which consisted of two inoculation treatments plus a control, with 5 elite genotypes and 6 plants per genotype as experimental unit. The genotypes were assigned in a block design and randomly distributed within the greenhouse. Treatments were randomly assigned within each block or genotype, with no buffer area between each block.

For treatment 1 inoculation process, an incision was made with a sterile 0.5 mm diameter punch 5 cm from the plant base. A same diameter disk of MYEA with *C. fimbriata* mycelium was placed in the previously open wound using a sterile mycological loop, and the wound was tightly sealed with an adhesive plastic wrap. Treatment 2 inoculation process involved opening a 2 cm herringbone-shaped longitudinal incision with a sterile scalpel, 5 cm from the plant base.

Subsequently, 500 μ l of a pathogen spore suspension at 2.5×10^6 spores/mL concentration was inoculated using a micropipette. The wound was then sealed with an adhesive plastic wrap. In the control treatment, a superficial incision was made with a sterile scalpel, 5 cm from the base of the plant, and a disc of MYEA agar without the presence of the pathogen was placed. Finally, the wound was tightly sealed by wrapping with adhesive plastic.

Pathogenicity test evaluation

After inoculation, the behavior of the inoculum on the plants was evaluated at 30, 60, 90, and 120 days after the trail was established. The quantitative variables measured were total height (from base to apex) using a 1 m ruler, basal diameter using a no digital vernier, and the total number of functional leaves were counted.

Disease incidence was assessed as binary variable categorized as healthy (alive = 0) or diseased (dead = 1). Equation 1 proposed by Cavallini (1998) was employed to calculate the percentage of incidence for each genotype, and overall of the entire trial at each of the four evaluations.

$$Incidence = \frac{Total\ affected\ plants}{Total\ plants} * 100 \quad (1)$$

The degree of resistance was determined by evaluating the internal lesion in each plant, based on the advancement of the fungus lesion from the initial inoculum incision. After 120 days the entire trial was harvested. Previous tool sterilization the control treatment was cut down first, followed by treatments 1 and 2. Each plant was labeled according to its genotype and treatment, the leaves and branches were removed, and the stems were transferred to the forest pathology laboratory in the Forestry Research and Innovation Center, School of Forestry Engineering, Technological Institute of Costa Rica.

In the laboratory, a longitudinal cut was made along the entire length/height of the plant by the use of a sterile tape (sterilized in each repetition). The length of the spot caused by *C. fimbriata* was measured from the point of injury in both directions (upward and downward), as described by Oliveira (2010). Severity was calculated using equation 2.

$$Severity = \frac{Injury\ longitude\ or\ spot}{Plant\ total\ height} \times 100 \quad (2)$$

Degree of resistance was then determined according to the following scale: resistant ($\leq 10\%$), tolerant ($10 < X \leq 20\%$) and susceptible ($>20\%$).

Statistical analyses

The collected data was first analyzed for compliance with homeostaticity assumptions. Subsequently, an analysis of variance (ANDEVA), was performed for each of the variables evaluated (total height, basal diameter, number of functional leaves, incidence, and degree of resistance) at 30, 60, 90 and 120 days. The data was analyzed using a Randomized Complete Block Design (equation 3).

$$Y = \beta \text{Genotype} + \alpha \text{Treatment} + \phi \text{Genotype} \times \text{Treatment} + e \quad (3)$$

Where, β = the effect of i-th Genotype, α = the effect of j-th Treatment and ϕ = interaction effect of i-th Genotype by j-th Treatment (experimental unit).

A Duncan test ($\alpha=0.05$) was performed to determine significant differences between treatments and genotypes. All statistical analyses were conducted using InfoStat software version 2019 (Di Rienzo et al., 2019).

Results

Pathogenicity evaluation

The results demonstrate the progressive expression of treatment effects on plant growth as infection advanced (Figure 1). At 30 days no visible treatment effects on plant growth were observed. At the evaluation at 60 days the first visible effect was observed, with reduction of height growth and a decrease in the number of leaves in plants

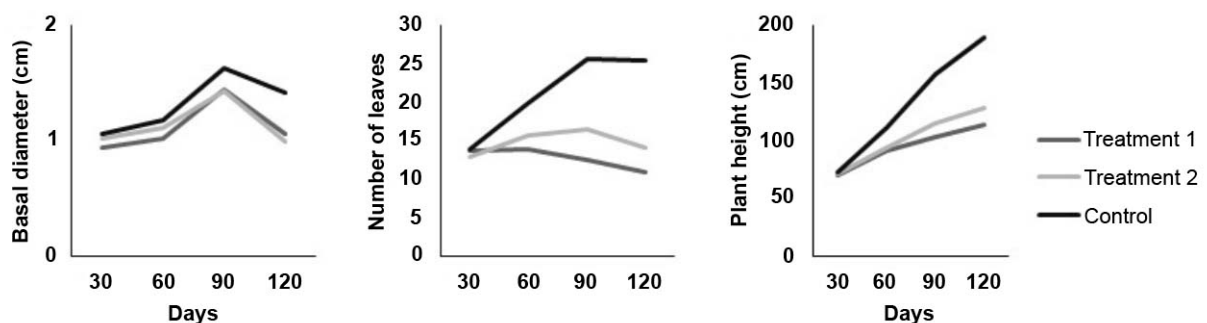


Figure 1. Effect of two inoculation treatments of *C. fimbriata* in *G. arborea* plants growth at 30, 60, 90, and 120 days. Treatment 1 (solid medium), Treatment 2 (liquid medium). Instituto Tecnológico de Costa Rica, Santa Clara, San Carlos, Costa Rica October 2019 to January 2020.

Figura 1. Efecto de dos tratamientos de inoculación de *C. fimbriata* en plantas de *G. arborea* a los 30, 60, 90 y 120 días. *Tratamiento 1 (medio sólido), Tratamiento 2 (medio líquido). Instituto Tecnológico de Costa Rica, Santa Clara, San Carlos, Costa Rica. Octubre 2019 a enero 2020.

inoculated with the fungus. By 90 and 120 days, the effects of both inoculation treatments were evident, resulting in lower height development, lower number of leaves and a slightly lower basal diameter. Number of leaves exhibited the most pronounced effect associated to the two inoculation treatments. A considerably lower number of leaves was observed in the plants at 90 and 120 days in comparison to the control treatment (Figure 1).

In general, trial plants reached an average height of 71.37 cm, a basal diameter of 1.01 cm and 13.51 leaves after 30 days of evaluation. After 60 days, the average height was 98.99 cm, 1.11 cm basal diameter and 16.53 leaves. At the 90-day evaluation the plants had an average height of 125.26 cm, a basal diameter of 1.50 cm and 18.25 leaves per plant. At 120 days the trees reached an average height of 140.25 cm, a basal diameter of 1.45 cm and 15.93 leaves per plant.

The results at 30 days indicate that, there were no significant differences ($p>0.05$) between inoculation treatments with the control, for any of the three response, total height, basal diameter and number of leaves. However, at the genotype level, significant differences ($p<0.05$) were observed between clones 20 and 15N in all the three variables. Additionally significant differences ($p<0.05$) were found between clones 20 and 57 in terms of the number of leaves.

At the 60-days evaluation, significant differences ($p<0.05$) were observed between the inoculation treatments and the control plants which exhibited lower height, and lower number of leaves. However, there were no significant differences between treatments in the basal diameter. Regarding the genotypes, it was observed that clone 15N showed significantly lower growth compared to the other four genotypes.

Both the 90 day and 120 day evaluations showed significant differences ($p<0.05$) among treatments for the three response variables with respect to control. However, there were no significant differences ($p>0.05$) between the two infection treatments. Regarding the genotypes, significant differences ($p<0.05$) were observed at 90-days evaluation between genotypes 20 and 1 for plant height, 20 and 57 for basal diameter and, 15N and 57 for number of leaves. At 120-days evaluation significant differences ($p<0.05$) were observed between genotypes 20 and 57 for height, 15N and 57 for basal diameter and, 15N and 1 for number of leaves.

Mortality was recorded 38 days after establishment. For the 60-day evaluation, there was a mortality rate of 14.4 % which increased to 21.1 % at 90 days, and finally reached 26,7 % at 120 days. Treatment 1 (solid medium) had the highest number of dead individuals in all three evaluations (Figure 2a). Genotype 15N had the highest number of dead individuals while genotype 1 had only one dead individual throughout the trial (Figure 2b).

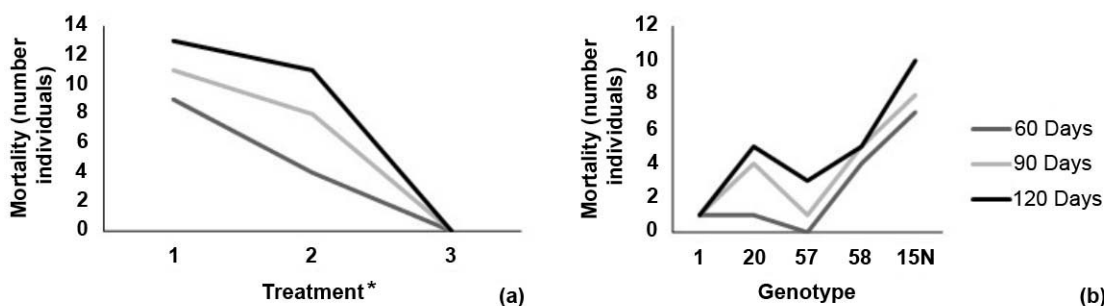


Figure 2. Reported mortality by number of individuals according to (a) inoculation or treatment method and (b) melina (*Gmelina arborea*) genotype at 60, 90 and 120 days of evaluation. Santa Clara, San Carlos, Costa Rica October 2019 to January 2020.

* Treatment 1 (solid medium), Treatment 2 (liquid medium) and Treatment 3 (control).

Figura 2. Mortalidad reportada por cantidad de individuos según (a) el método de inoculación o tratamiento y (b) el genotipo de melina (*Gmelina arborea*) a los 60, 90, y 120 días de evaluación. Santa Clara, San Carlos, Costa Rica octubre 2019 a enero 2020.

*Tratamiento 1 (medio sólido), Tratamiento 2 (medio líquido) y Tratamiento 3 (testigo).

Test symptoms observed in greenhouse (Figure 3) were similar to those observed in field tests; including leaf wilt (Figure 3d) and the presence of basal sprouts (Figure 3c). This two symptoms appeared first, followed by weeping (Figure 3b), cankers (Figure 3a), and finally plant death (Figure 3e).

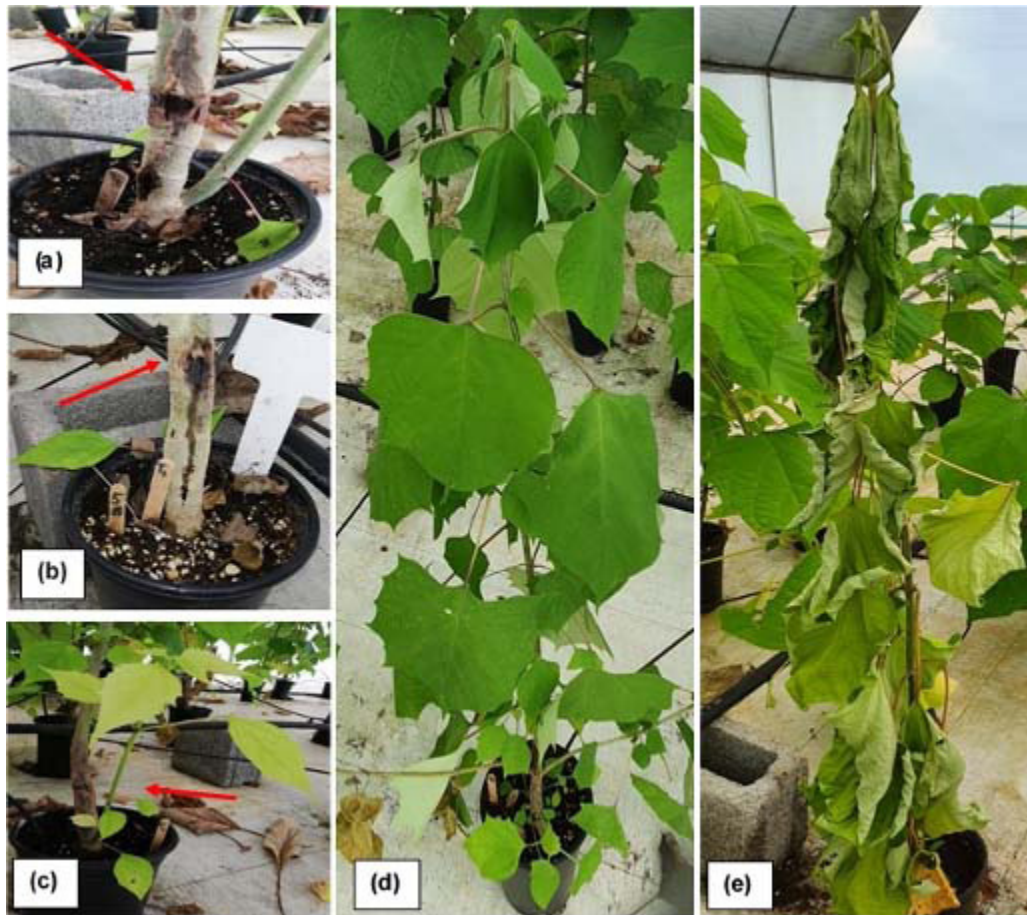


Figure 3. “Ceratocystis wilt” symptoms in *Gmelina arborea* inoculated clones at 90 days (a) Canker (b) Exudation point (c) Basal sprouts and near initial incision (d) Wilting (e) Death and wilting. Santa Clara, San Carlos, Costa Rica October 2019 to January 2020.

Figura 3. Sintomatología de la enfermedad “marchitez del ceratocystis” en clones de *Gmelina arborea* a los 90 días. (a) Cancro. (b) Lloradero. (c) Rebrote basal y cerca de la incisión inicial. (d) Marchitez. (e) Muerte y marchitez. Santa Clara, San Carlos, Costa Rica octubre 2019 a enero 2020.

After 60 days there were significant differences in disease incidence between the two inoculation treatments. Inoculation with solid medium showed a significantly higher number of diseased plants (Figure 4b). Among genotypes, clone 57 did not register a single diseased plant, while clone 15N showed all diseased plants (Figure 4a).

After 90 days, the pattern of pathogen incidence became more evident. Although inoculation method 1 consistently exhibited significant differences from 60-day evaluation. Among the genotypes the pattern was almost established after 90 days, but more consistent after 120 days. Clone 20 was always positioned at the middle and showing a moderate tolerance behavior with an incidence rate of 25-28 % throughout the test evaluation.

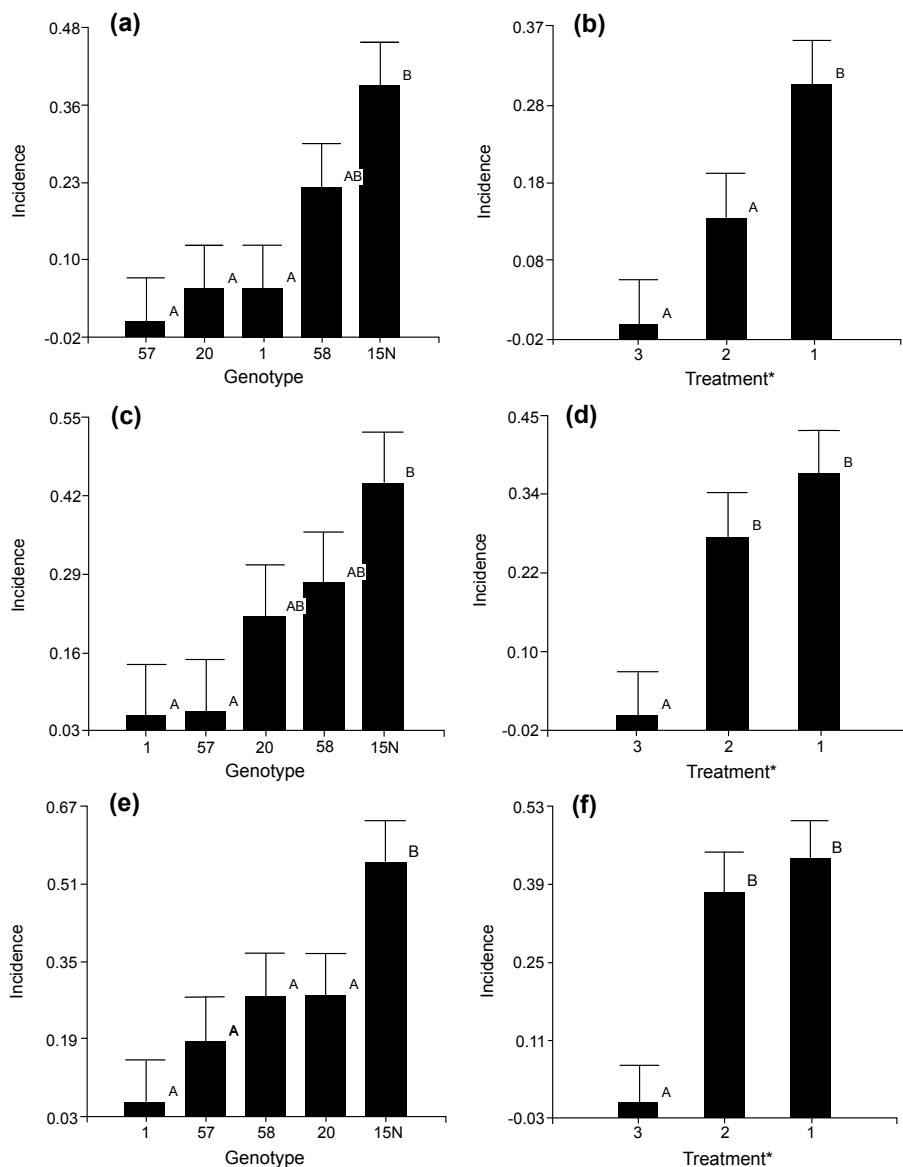


Figure 4. Disease incidence evaluation in the inoculation trial of *Ceratocystis fimbriata* in *Gmelina arborea* genotypes. (a) 60-days evaluation according to the genotypes (b) After 60 days according to inoculation method (c) 90-days evaluation according to the genotypes (d) After 90 days according to inoculation method (e) 120-days evaluation according to the genotypes (f) After 120 days according to inoculation method. Santa Clara, San Carlos, Costa Rica October 2019 to January 2020.

Means with a common letter are not significantly different ($p>0.05$). * Treatment 1 (solid medium), Treatment 2 (liquid medium) and Treatment 3 (control).

Figura 4. Evaluación de la incidencia de la enfermedad en el ensayo de inoculación de *Ceratocystis fimbriata* en *Gmelina arborea*. (a) Evaluación a los 60 días según el genotipo. (b) Evaluación a los 60 días según el método de inoculación. (c) Evaluación a los 90 días según el genotipo. (d) Evaluación a los 90 días según el método de inoculación. (e) Evaluación a los 120 días según el genotipo. (f) Evaluación a los 120 días según el método de inoculación. Santa Clara, San Carlos, Costa Rica octubre 2019 a enero 2020.

Medias con una letra común no son significativamente diferentes ($p>0,05$). *Tratamiento 1 (medio sólido), Tratamiento 2 (medio líquido) y Tratamiento 3 (testigo).

In the 120-day evaluation, there were no significant differences between treatments (1 and 2), but there were clear differences compared to the control (treatment 3, Figure 4f). At the genotype level the same two-groups pattern persisted with very tolerant and highly susceptible. Clone 15N exhibited the highest susceptibility to *Ceratocystis* with all its plants showing disease symptoms. On the other hand, clone 1 was the only resistant which showed healthy all its plants. Genotypes 57, 20 and 58 showed a moderate tolerance pattern, although there were not significant differences among them (Figure 4e).

In the final destructive evaluation, no significant differences in the progress of the internal lesion were observed, between the two inoculation methods (Figure 5b). However, significant differences were evident between genotypes 1 and 15N (Figure 5a). Based on this criterion, all genotypes were classified as highly tolerant or resistant (genotype 1), moderately tolerant (genotypes 20 and 57) and highly susceptible (genotypes 58 and 15N, Figure 5a).

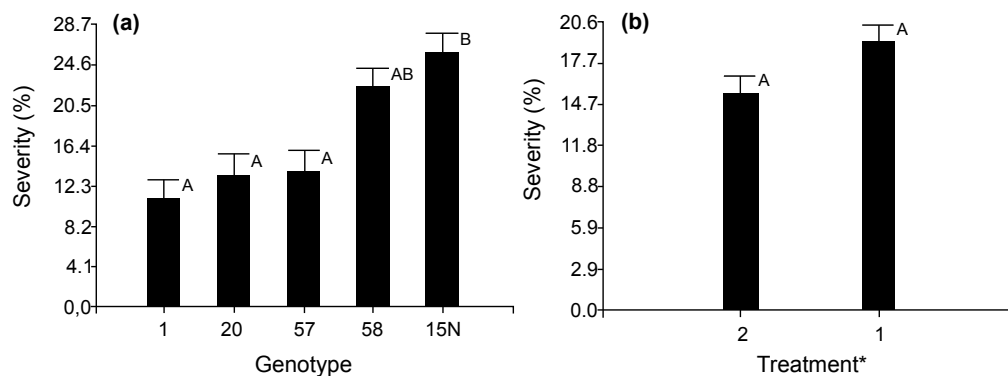


Figure 5. Severity percentage of *Ceratocystis fimbriata* in *Gmelina arborea* after 120-days, based on the analysis of the internal lesion progress. (a) Evaluation according to the genotypes (b) Evaluation according to the method of inoculation.

* Treatment 1 (solid) and Treatment 2 (liquid). Santa Clara, San Carlos, Costa Rica from October 2019 to January 2020.

Figura 5. Porcentaje de severidad del *Ceratocystis fimbriata* en genotipos de *Gmelina arborea* a los 120 días, basado en el análisis del progreso de la lesión interna. (a) Evaluación según el genotipo. (b) Evaluación según el método de inoculación. * Medias con una letra común no son significativamente diferentes ($p > 0,05$).

*Tratamiento 1 (sólido) y Tratamiento 2 (líquido). Santa Clara, San Carlos, Costa Rica de octubre 2019 a enero 2020.

Discussion

In pathogenicity trials it is not usually evaluated the effect in growth traits like height and basal diameter. However, in this investigation significant effects of the fungus *C. fimbriata* on plant development were determined, compared to the control plants. These growth effects became more pronounced from 60 to 90 days, and further to 120 days, as pathogen advancement within the vascular system of inoculated plants (Figure 1).

A related pattern can be observed between diameter size and disease development caused by *C. fimbriata* (Murillo-Gamboa et al., 2016). However, this pattern was not observed in the trial, possibly because the tests were performed on very young juvenile plants (less than 1 year old) and in plastic masseters with its limited growth conditions. The symptomatology observed in the pathogenicity trial in greenhouse, was similar to that reported in field work (Arguedas et al., 2018; Murillo-Gamboa et al., 2016; Salas-Rodríguez et al., 2016), such as the presence of canker, weeping, wilting, resprouting and finally death (Figure 2).

At 90 days, incidence reached 21.1 %, a value similar to that reported in commercial plantations with 2.7-year-old clonal material in southern Costa Rica. Where an incidence of 22.6 % was recorded (Murillo-Gamboa et al., 2016), these results support the veracity of these pathogenicity tests. The pathogenicity of the *C. fimbriata* strain used in some trials was determinant in the time elapsed until the appearance of visible symptoms, from inoculation to mortality (Harrington et al., 2011). In this study, mortality initiation was observed at day 38th, similar to that reported in young plants of *Hevea brasiliensis* inoculated with strains of *C. fimbriata*, isolated in Bahia, Brazil, where plants lasted less than 60 days to die (Valdetaro et al., 2015).

It is known that the time elapsed from inoculation to the first symptoms appearance or death, varies considerably among hosts and strains used (Cordero Vega, 2017; Valdetaro et al., 2015). It was observed how none of the single plants within each genotype, presented symptoms at the same time. Except for genotype 15N, where most of its plants (seven ramets) had died at the 60th-day evaluation (Figure 4). This variation in symptoms initiation can be attributed to different factors such as, strain pathogenicity, characteristics of the inoculation method (spore concentration, wound position) and the initial plant conditions like age, vigor, substrate, fertilization, and water regime (Argôlo Magalhães et al., 2016; Sanches et al., 2008).

With respect to strain pathogenicity, *C. fimbriata* showed little morphological variation among isolates. However, differences have been found within the same species, which may explain its variation and specificity in isolated strains from hosts (Cordero Vega, 2017; Valdetaro et al., 2015). Testing only one single strain does not allow to determine its degree of pathogenicity. Likewise, the inoculation method was homogenized by performing a single wound in the same position in the host plant. However, the type of wound needed to be modified according to the inoculum used (solid and liquid), where it was respectively performed through a circular and herringbone shape.

Differences were found between the two treatments (solid treatment or number 1; and liquid treatment or number 2) at 60 days (Figure 4b). The concentration of the liquid treatment was similar to that reported in pathogenicity trials on cocoa, sweet potato, coffee, mango and *Metrosideros polymorpha* plants (Al Adawi et al., 2014; Argôlo Magalhães et al., 2016; Barnes et al., 2018; Harrington et al., 2011). These studies reported similar mortality rates to the findings in this research with melina. However, no significant differences were determined at 90 and 120 days between both treatments (Figure 4d and 4f).

Although the experimental material used in the trails was relatively homogeneous, there were still small initial differences in their size and basal diameter. Which may explain that some genotypes showed a significant greater and vigorous growth at 60 and 90 days. Plants were assessed as intolerant by showing any of the wilting symptoms, like basal sprouts, liquid spillage from stem, leaf loss at the end of branch, among others. The degree of tolerance could be also assessed by counting the number of infected ramets per clone.

Even though the greenhouse guarantees good environmental control, some degree of variation may persist that could partially affect experimental results. Therefore, it is recommended to observe the progress pattern of internal lesions caused by the fungus, up and down direction from the wound along the stem. In their investigations reported found differences in the advance of internal necrosis in tissues caused by *C. cacaofunesta*, as well as in the degree of plant growth (Alvarenga Arriel et al., 2016; Sanches et al., 2008).

In this melina trial similar results were observed, where the evaluation of internal lesion allowed the determination of genotypes as intolerant, despite its lack of external symptoms (Figure 5a). Other research reported using length of internal lesion caused *Ceratocystis* spp. as a percentage of disease severity (Alvarenga Arriel et al., 2016; Oliveira et al., 2015) in species such as mango, eucalyptus, ficus among others. Thus, identifying genotypes susceptible or resistant to the disease, which can then be utilized in breeding programs for each species (Guimarães et al., 2021; Yakushiji et al., 2019).

This type of results can be associated with the genotype-pathogen response, such as the production of antifungal compounds (Harrington et al. 2011; Valdetaro et al., 2015). Due to the high incidence of *C. fimbriata* in melina plantations in the country, which promotes a high degree of mortality with an important economic impact,

its prevention through the usage of tolerant genotypes, looks like to be one of the best approaches. Therefore, it is essential to focus on the search for genetically resistant or tolerant materials, as one of the best options for integrated disease management (Alvarenga Arriel et al., 2016; Argôlo Magalhães et al., 2016; Yakushiji et al., 2019).

In the search for greater efficiency in the fight against this disease, the degree of virulence of the strain should be considered (Valderato et al., 2015). The most aggressive *Ceratocystis* strain need to be determined, to use it for screening purposes of the collection of genotypes in the breeding population.

Conclusions

Treatment 1 using the solid medium was found to be the most effective method of inoculating *C. fimbriata* in melina plants. The evaluation of disease incidence and severity in the collection of genotypes, showed the need to assess results after at least 90 days of inoculation. Among the five clones investigated, genotype 15N can be distinguished as highly susceptible, while genotype 1 as highly tolerant to *C. fimbriata* (isolate CIF 001). There was no evidence of completely resistant genotypes, but highly tolerants will be included in melina breeding programs of GENFORES.

Acknowledgments

The researchers wish to thank to Instituto Tecnológico de Costa Rica and the Tree Improvement Cooperative GENFORES, for the financial and technical support provided for this research.

References

- Al Adawi, A. O., Barnes, I., Khan, I. A., Deadman, M. L., Wingfield, B. D., & Wingfield, M. J. (2014). Clonal structure of *Ceratocystis manginecans* populations from mango wilt disease in Oman and Pakistan. *Australasian Plant Pathology*, 43(4), 393–402. <https://doi.org/10.1007/s13313-014-0280-0>
- Alvarenga Arriel, D. A., da Silva Guimarães, L. M., Vilela de Resende, M. D., Pinheiro Lima Neto, F., Said Heid Schettini Silva, D. F., Lopes de Siqueira, D., & Cout Alfenas, A. (2016). Genetic control of resistance on *Mangifera indica* to *Ceratocystis* wilt. *Scientia Horticulturae*, 211, 312–318. <https://doi.org/10.1016/j.scienta.2016.09.001>
- Argôlo Magalhães, D. M., Martins Newman Luz, E. D., Vanderlei Lopes, U., Rocha Niella, A. R., & Oliveira Damaceno, V. (2016). Leaf disc method for screening *Ceratocystis* wilt resistance in cacao. *Tropical Plant Pathology*, 41, 155–161. <https://doi.org/10.1007/s40858-016-0081-9>
- Arguedas, M., Rodríguez-Solís, M., Moya, R., & Berrocal, A. (2018). *Gmelina arborea* “death disease” in fast-growth plantations: Effects of soil and climatic conditions on severity and incidence and its implications for wood quality. *Forest Systems*, 27(1), Article e003. <https://doi.org/10.5424/fs/2018271-12236>
- Ávila-Arias, C., Murillo-Cruz, R., Murillo-Gamboa, O., & Sandoval, C. (2015). Interacción genotipo sitio para dos conjuntos clonales de *Gmelina arborea* Roxb., en sitios planos del Pacífico Sur de Costa Rica. *Revista Forestal Mesoamericana Kurú*, 12(29), 2–14. <https://doi.org/10.18845/rfmk.v12i29.2250>

- Ávila-Arias, C., Murillo-Cruz, R., & Murillo-Gamboa, O. (2015). Selección de clones superiores de dos conjuntos genéticos de *Gmelina arborea* en el Pacífico sur de Costa Rica. *Revista de Ciencias Ambientales*, 49(1), 17–35. <https://doi.org/10.15359/rca.49-1.2>
- Baker, C. J., Harrington, T. C., Krauss, U., & Alfenas, A. C. (2003). Genetic Variability and Host Specialization in the Latin American Clade of *Ceratocystis fimbriata*. *Phytopathology*, 93(10), 1274–1284. <https://doi.org/10.1094/phyto.2003.93.10.1274>
- Barnes, I., Fourie, A., Wingfield, M. J., Harrington, T. C., McNew, D. L., Sugiyama, L. S., & Keith, L. M. (2018). New *Ceratocystis* species associated with rapid death of *Metrosideros polymorpha* in Hawai'i. *Persoonia – Molecular Phylogeny and Evolution of Fungi*, 40, 154–181. <https://doi.org/10.3767/persoonia.2018.40.07>
- Cavallini, L. F. A. (1998). *Fitopatología: un enfoque agroecológico*. Editorial Universidad de Costa Rica.
- Cordero Vega, M. J. (2017). *Caracterización morfológica, patogénica y molecular de aislamientos de Ceratocystis spp. provenientes de seis zonas cafetaleras de Costa Rica* [Tesis de licenciatura, Universidad de Costa Rica]. Repositorio SIBDI de la Universidad de Costa Rica. <http://repositorio.sibdi.ucr.ac.cr:8080/xmlui/handle/123456789/4329>
- Desprez-Loustau, M. -L., Aguayo, J., Dutech, C., Hayden, K. J., Husson, C., Jakushkin, B., & Vacher, C. (2016). An evolutionary ecology perspective to address forest pathology challenges of today and tomorrow. *Annals of Forest Science*, 73, 45–67. <https://doi.org/10.1007/s13595-015-0487-4>
- Di Rienzo, J. A., Casanoves, F., Balzarini, M. G., González, L., Tablada, M., & Robledo, C. W. (2019). *Infostat software estadístico* (Versión 2017). InfoStat. <http://www.infostat.com.ar/>
- Espitia, M., Murillo, O., & Castillo, C. (2016). Ganancia genética esperada en melina (*Gmelina arborea* Roxb.) en Córdoba, (Colombia). *Árvore*, 40(1), 71–80. <https://doi.org/10.1590/0100-67622016000100008>
- Ferreira, E. M., Harrington, T. C., Thorpe, D. J., & Alfenas, A. C. (2010). Genetic diversity and interfertility among highly differentiated populations of *Ceratocystis fimbriata* in Brazil. *Plant Pathology*, 59(4), 721–735. <https://doi.org/10.1111/j.1365-3059.2010.02275.x>
- Ferreira, M. A., Harrington, T. C., Alfenas, A. C., & Mizubuti, E. S. (2011). Movement of genotypes of *Ceratocystis fimbriata* within and among Eucalyptus plantations in Brazil. *Phytopathology*, 101(8), 1005–1012. <https://doi.org/10.1094/PHYTO-01-11-0015>
- Guimarães, L. M. S., Nunes, A. S., Santos, S. A., Resende, M. D. V., Damacena, M. B., Siqueira, D. L., Alves, R. S., & Alfenas, A. C. (2021). Resistance of mango cultivar Ubá to *Ceratocystis fimbriata* depends on the pathogen's physiological variability. *Crop Protection*, 143, Article 105560. <https://doi.org/10.1016/j.cropro.2021.105560>
- Harrington, T. C., Thorpe, D. J., & Alfenas, A. C. (2011). Genetic variation and variation in aggressiveness to native and exotic hosts among Brazilian populations of *Ceratocystis fimbriata*. *Phytopathology*, 101(5), 555–566. <https://doi.org/10.1094/PHYTO-08-10-0228>
- Harrington, T. C., Kazmi, M. R., Al-Sadi, A. M., & Ismail, S. I. (2014). Intraspecific and intragenomic variability of ITS rDNA sequences reveals taxonomic problems in *Ceratocystis fimbriata* sensu stricto. *Mycologia*, 106(2), 224–242. <https://doi.org/10.3852/13-189>
- Hernández Castro, W., Badilla Valverde, Y., Esquivel Segura, E., & Murillo Gamboa, O. (2021). Comportamiento de clones de melina (*Gmelina arborea* Roxb.) en condiciones de suelo ácidos. *Revista Ciencias Ambientales*, 55(2), 229–249. <http://doi.org/10.15359/rca.55-2.11>

- Hernández-Castro, W., Murillo-Gamboa, O., & Badilla-Valverde, Y. (2021a). Selección temprana en ensayos clonales de melina (*Gmelina arborea* Roxb.) en Costa Rica. *Agronomía Mesoamericana*, 32(1), 93–106. <https://doi.org/10.15517/am.v32i1.42069>
- Hernández-Castro, W., Badilla Valverde, Y., & Murillo-Gamboa, O. (2021b). Estimación de parámetros genéticos de *Gmelina arborea* Roxb. (melina) en el Caribe de Costa Rica. *Uniciencia*, 35(1), 352–366. <http://doi.org/10.15359/ru.35-1.22>
- Holland, L. A., Lawrence, D. P., Nouri, M. T., Travadon, R., Harrington, T. C., & Trouillas, F. P. (2019). Taxonomic revision and multi-locus phylogeny of the North American clade of *Ceratocystis*. *Fungal Systematics and Evolution*, 3(1), 135–156. <https://doi.org/10.3114/fuse.2019.03.07>
- Instituto Meteorológico Nacional. (s.f.). *Capas del mapa. Pronóstico del tiempo por regiones*. Recuperado abril 3, 2020 de <https://www.imn.ac.cr/mapa>
- Instituto Nacional de Estadística y Censos. (2015). *VI Censo Nacional Agropecuario: Cultivo Agrícolas, Forestales y Ornamentales* (1era ed.). Instituto Nacional de Estadística y Censos (INEC). <https://n9.cl/acye5>
- Méndez-Álvarez, D., de Souza, C., Alfenas, A., Badilla, Y., Murillo, O., & Alfenas, R. (2020). First report of *Ceratocystis fimbriata* causing wilt on *Gmelina arborea* in Costa Rica. *Forest Pathology*, 50(5), Article e12628. <https://doi.org/10.1111/efp.12628>
- Méndez-Álvarez, D., Murillo-Gamboa, O., Badilla-Valverde, Y., & Hernández-Castro, W. (2021). Genetic tolerance to *Ceratocystis* wilt in melina (*Gmelina arborea* Roxb.). *Silvae Genetica*, 70(1), 195–204. <https://doi.org/10.2478/sg-2021-0017>
- Meneses Rojas, G. (2008). *Estudio de aislamientos de hongo fitopatógeno del café Ceratocystis fimbriata* [Tesis de bachiller, Instituto Tecnológico de Costa Rica]. Repositorio del Instituto Tecnológico de Costa Rica. <https://repositoriotec.ac.cr/handle/2238/543>
- Murillo-Gamboa, O., Salas-Rodríguez, A., Murillo-Cruz, R., & Ávila-Arias, C. (2016). Tasa de avance de la pudrición del tronco en melina *Gmelina arborea* Roxb. y posibilidades de manejo. *Revista Forestal Mesoamericana Kurú*, 13(32), 40–50. <https://doi.org/10.18845/rfmk.v0i0.2551>
- Oliveira, L. S. S. (2010). *Agressividade de isolados de Ceratocystis fimbriata em clones de Eucalyptus spp.* [Dissertação mestrado, Universidade Federal de Viçosa]. Repositório do Biblioteca Florestal. <http://www.bibliotecaflorestal.ufv.br/handle/123456789/2872>
- Oliveira, L. S. S., Guimarães, L. M. S., Ferreira, M. A., Nunes, A. S., Pimenta, L. V. A., & Alfenas, A. C. (2015). Aggressiveness, cultural characteristics and genetic variation of *Ceratocystis fimbriata* on *Eucalyptus* spp. *Forest Pathology*, 45(6), 505–514. <https://doi.org/10.1111/efp.12200>
- Salas-Rodríguez, A., Murillo-Gamboa, O., Murillo-Cruz, R., Ávila-Arias, C., & Mata-Granados, X. (2016). Evaluación de la severidad de la pudrición del tronco en *Gmelina arborea* Roxb. *Revista Forestal Mesoamericana Kurú*, 13(32), 1–10. <https://doi.org/10.18845/rfmk.v0i0.2547>
- Sanches, C. L. G., Pinto, L. R. M., Pomella, A. W. V., Silva, S. D. V. M., & Loguercio, L. L. (2008). Assessment of resistance to *Ceratocystis cacaofunesta* in cacao genotypes. *European Journal of Plant Pathology*, 122, 517–528. <https://doi.org/10.1007/s10658-008-9319-9>
- Snieszko, R. A., & Koch, J. (2017). Breeding trees resistant to insects and diseases: putting theory into application. *Biological Invasions*, 19, 3377–3400. <https://doi.org/10.1007/s10530-017-1482-5>

- Thorpe, D. J., Harrington, T. C., & Uchida, J. Y. (2005). Pathogenicity, Internal Transcribed Spacer-rDNA Variation, and Human Dispersal of *Ceratocystis fimbriata* on the Family Araceae. *Phytopathology*, *95*(3), 316–323. <https://doi.org/10.1094/phyto-95-0316>
- ur Rehman, A., ud Din Umar, U., Hasan Naqvi, S. A., Rana Latif, M., Aleem Khan, S., Tariq Malik, M., & Freed, S. (2015). Emerging resistance against different fungicides in *Lasiodiplodia theobromae*, the cause of mango dieback in Pakistan. *Archives of Biological Sciences*, *67*(1), 241–249. <https://doi.org/10.2298/ABS140904030R>
- Valdetaro, D. C. O. F., Oliveira, L. S. S., Guimarães, L. M. S., Harrington, T. C., Ferreira, M. A., Freitas, R. G., & Alfenas, A. C. (2015). Genetic variation, morphology and pathogenicity of *Ceratocystis fimbriata* on *Hevea brasiliensis* in Brazil. *Tropical Plant Pathology*, *40*, 184–192. <https://doi.org/10.1007/s40858-015-0036-6>
- Valdetaro, D. C. O. F., Harrington, T. C., Oliveira, L. S. S., Guimaraes, L. M. S., McNew, D. L., Pimenta, L. V. A., Goncalves, R. C., Schurt, D. A., & Alfenas, A. C. (2019). A host specialized form of *Ceratocystis fimbriata* causes seed and seedling blight on native *Carapa guianensis* (andiroba) in Amazonian rainforests. *Fungal Biology*, *123*(2), 170–182. <https://doi.org/10.1016/j.funbio.2018.12.001>
- Wingfield, M. J., & Robison, D. J. (2004). Diseases and insect pests of *Gmelina arborea*: real threats and real opportunities. *New Forests*, *28*(2-3), 227–243. <https://doi.org/10.1023/B:NEFO.0000040950.01256.ed>
- Yakushiji, H., Morita, T., & Jikumaru, S. (2019). *Ceratocystis* canker resistance in BC1 populations of interspecific hybridization of fig (*Ficus carica*) and *F. erecta*. *Scientia Horticulturae*, *252*, 71–76. <https://doi.org/10.1016/j.scienta.2019.03.039>
- Zhan, J., Thrall, P. H., & Burdon, J. J. (2014). Achieving sustainable plant disease management through evolutionary principles. *Trends in Plant Science*, *19*(9), 570–575. <https://doi.org/10.1016/j.tplants.2014.04.010>
- Zhan, J., Thrall, P. H., Papaix, J., Xie, L., & Burdon, J. J. (2015). Playing on a pathogen's weakness: using evolution to guide sustainable plant disease control strategies. *Annual Review of Phytopathology*, *53*, 19–43. <https://doi.org/10.1146/annurev-phyto-080614-120040>