

**Association of Marine Laboratories of the Caribbean
25th Annual Meeting**

Program Summary

Registration:

16th August:	1600-2200	Marriott Hotel
17th August	0800-1100	Tupper Conference Center

Technical Sessions:

17 th August:	0815-0940	Welcoming remarks & invited speakers
	0940 - 1020	Evolutionary Patterns
	1040-1640	Coral Reef Ecology
18th August:	0900 - 1020	Marine Monitoring
	1040 - 1120	Mangrove Ecology
	1300 - 1600	Benthic Ecology, Invertebrate Biology & Poster
	1600 - 1720	Larval Biology
19th August:	0900-1140	Vertebrate Biology
	1300 - 1540	Fisheries Research
	1540 - 1610	Sociedad Latinoamericana de Arrecifes Coralinos
	1610 - 1640	CARICOMP

Meals:

Coffee Breaks:	Twice daily
Lunch	Daily
Bar & social:	17th August at 1700, Tupper Center
Banquet:	18th August at 1930, Tupper Center

Meetings:

17th August	2030 Executive Board, Marriot Hotel
19th August	1640 General Assembly, Tupper Center

25th Annual Meeting-AMLC

Program

17th August

0815 - 0820	Opening
0820 - 0900	I. Goodbody Association of Island Marine Laboratories of the Caribbean: a Historical Perspective.
0900- 0940	J.B.C. Jackson Is Ecology Useful?

Evolutionary Patterns

Chairperson: John Christy

0940 - 1000	E. Bermingham The Molecular Population Genetics of Reef Fishes
-------------	---

1000 - 1020 J.B.C. Jackson(*) & A.H. Cheetham
Hoy Many Cheilostomes? Morphospecies and Genetic Species Revisited.

1020 - 1040 Coffee Break

Coral Reef Ecology

Chairpersons: Héctor Guzmán & Jorge Cortés

- 1040 - 1100 J. Cortés
Los Arrecifes Cuaternarios del Caribe y Pacífico de Costa Rica.
- 1100 - 1120 I. Holst(*) & H. Guzmán
Efectos de la Contaminación por Petróleo del Coral *Siderastrea siderea*.
- 1120 - 1140 P. Yoshioka
Effects of Colony Age on Size Specific Growth & Survival Rates the Gorgonian Psuedapterogorgia
- 1140 - 1500 Lunch
- 1500 - 1520 Coffee Break
- 1520 - 1540 C. Jiménez
Propiedades Mecánicas del Esqueleto del Coral *Siderastrea siderea* (Ellis & Solander): Variación Intraespecífica.
- 1540 - 1600 L. Quirós
Caracterización de la Comunidad Arrecifial y el Impacto de los Sedimentos en el Refugio Nacional de Vida Silvestre Gandoca-Manzanillo. Provincia de Limón, Costa Rica.
- 1600 - 1620 H. Guzmán & C. Jiménez
Contaminación por Metales Pesados del Caribe de Centroamérica (Costa Rica y Panamá)
- 1620-1640 D. Forcucci
Automated Stations for Continuous Monitoring of Coral Reef Environments along the Florida Reef Tract: a Component of Seakeys.
- 1700 - 1830 Social
- 2030 AMLC Board Meeting, Marriot Hotel

18th August

Marine Monitoring

Chairperson: Norman Duke

- 0900-0920 P. Hallock, H. Talge, K. Smith(*) and E. M. Cockey
Bleaching in Reef Dwelling Foraminifera: Response to Ozone Depletion?
- 0920 - 0940 C. Brenes
Influencia de las Aguas Costeras en el Comportamiento del Golfo de Nicoya, Costa Rica.
- 0940 - 1000 I. Goodbody
The Ascidian Fauna of the Jamaican Laoon: Thirty Years of Change.

1000 - 1020 Z. Pinzón
Mapping Mangrove Forests Using Aerial Photography to Show Deforestation Caused by Two Large Oil Spills in Panama.

1020 - 1040 Coffee Break

Mangrove Ecology

Chairperson: Zuleika Pinzón

1040 - 1100 N. Duke
The Residual and Long Term Impact on Forest Growth and Recruitment in Mangrove Areas Affected by Two Large Oil Spills in Bahia Las Minas, Panama.

1100 - 1120 F. Pizarro
Uso del Manglar y Producción de Carbón en Costa Rica

1120 - 1300 Lunch

Benthic Ecology & Invertebrate Biology

Chairperson: Janzel Villalaz

1300 - 1320 W. Phoel
The Benthic Environment Near the Mississippi River Plume.

1320 - 1340 G. Smith(*) D. Gerace
Phosphorous Cycling in a Stable Seagrass Meadow.

1340 - 1400 K. Smith (*) P. Hallock
Dormancy in Two Caribbean Benthic Foraminifera with Algal Symbionts.

1400 - 1420 J. Villalaz (*) & J. Gómez
Estrategias de Reproducción (a Nivel Bioquímico) entre Pectinidos del Mar Caribe y el Golfo de Panamá.

1420 - 1440 R. Hayes
Coral Reef Bleaching and Ocean Thermal Anomalies.

1440 - 1500 Coffee Break

1500 - 1520 J. Couillard and C. Yeung (Poster Presentation)
Can Isolume Depths Generated by a Computer Model Predict the Vertical Distribution of Spiny Lobster (Crustacea: Palinuridae Phyllosoma) Larvae?

1520 - 1540 A. Herrera(*), J. Jara, H. Ramos & J.B.C. Jackson
Life History Variation in Two *Stylopoma* Species from Panama.

1540 - 1600 L. Ciereszko
Uptake of Vanadium V48 by Ascidiarians. A Comparative Study

Larval Biology

Chairperson: Nancy Knowlton

1600-1620 O. Azuaje and K.S. Chung(*)
Efecto Termono-Halino sobre la Preferencia Salina, Crecimiento y Sobrevivencia en Larvas del Camarón Blanco *Penaeus schmitti* bajo Condiciones de Laboratorio.

1620 - 1640 M. Criales
Effects of Coastal Oceanography and Vertical Distribution on *Decapod Larvae* and *Micronektonic Shrimps* in the Florida Keys.

- 1640 - 1700 D. Goldman
Paralarval Cephalopods from the Gulf Stream off the Florida Keys.
- 1700 - 1720 C. Riley
Gut Contents of Larval Fishes from Light Trap and Plankton Net Collections at Enmedio Reef Near Veracruz, Mexico.
- 1930 25th Anniversary Banquet

19th August

Vertebrate Biology

Chairperson: Ross Robertson

- 0900 - 0920 R.A. Byles, P.T. Plotkin(*) & D.W. Owen
Comparison of Migratory Behaviour of the Congeneric Sea Turtles, *Lepidochelys kempii* & *Lepidochelys olivacea*.
- 0920 - 0940 R. Robertson (*) S. Swearer
Production of Inviably Eggs by Labrid Fishes in the Wild.
- 0940 - 1000 A. Cedeño(*), R. Robertson & K. Cole
Sex Determination in the Cleaner Goby *Gobiosoma illecebrosus*
- 1000 - 1020 I.M. Segnini de Bravo
Tasa de Aclimatación al Cambio de Temperatura de Mugil curema.
- 1020 - 1040 Coffee Break
- 1040 - 1100 T. Brulé
Biología Descriptiva y Experimental del Mero, *Epinephelus morio* V. 1828 del Banco de Campeche.
- 1100 - 1120 D. Aranda
Programa de Investigación sobre Moluscos Marinos de Interés comercial del Golfo de México y el Caribe.
- 1120 - 1140 M. Lemus
Efecto de la Temperatura Sobre el Crecimiento de Juveniles de *Petenia kraussii* (Steindachner, 1878) (Pisces: Cichlidae) Medida de ARN/ADN.
- 1140 - 1300 Lunch

Fisheries Research

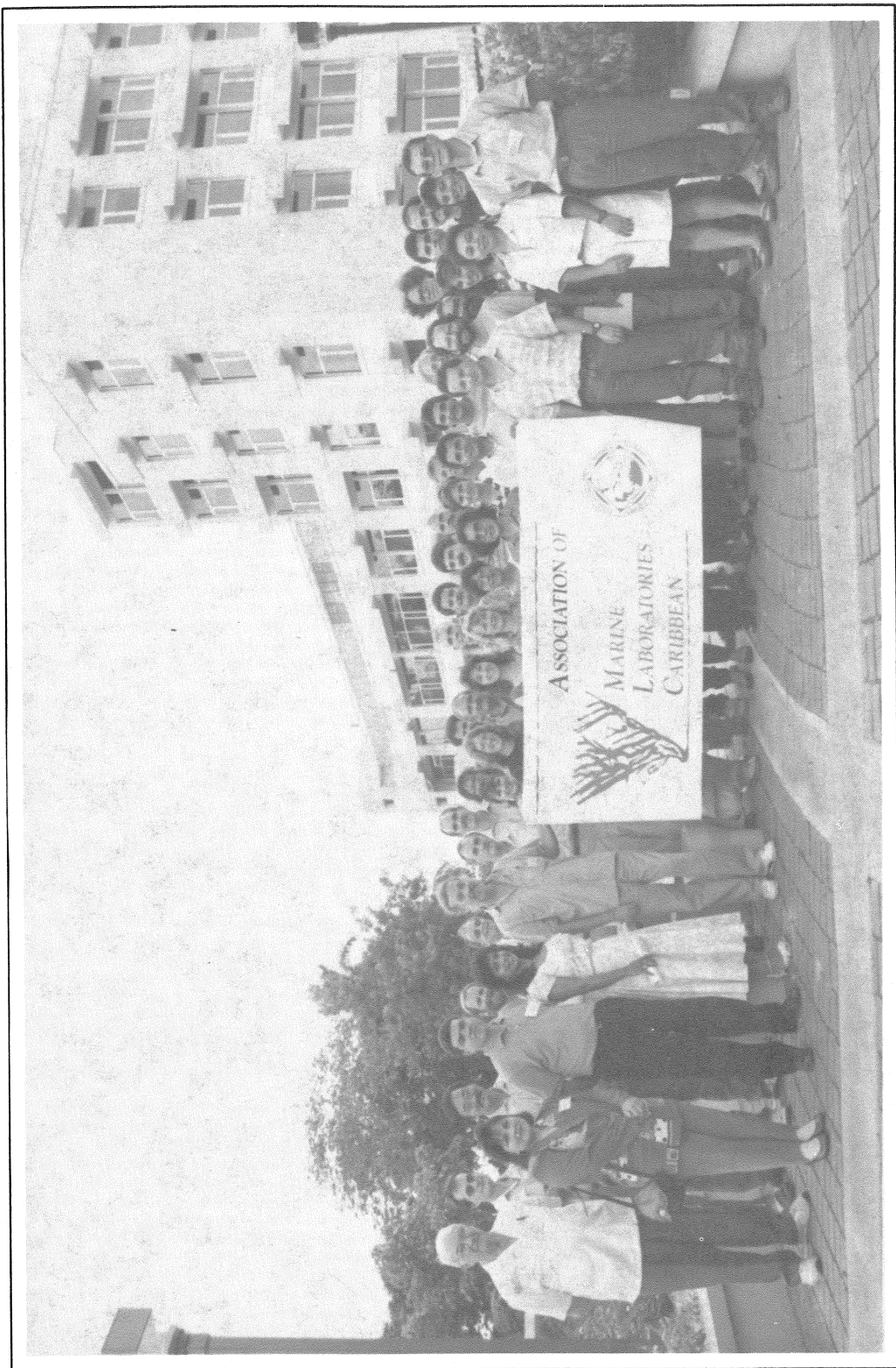
Chairperson: Jim Parrish

- 1300 - 1320 K. Burns
Cobia, Amberjack and Dolphin Age, Growth and Migration Study off the South West Coast of Florida.
- 1320 - 1340 G. Blanchard
Development of an Image Application for Scale Ring Counting.
- 1340 - 1400 D. Chacón
Aspectos Biométricos de la Población de Sábalo, *megalops atlanticus* (Pisces: Megalopidae)
- 1400 - 1420 O. Vásquez (*) & J. Cubit
The Subsistence Fishery on the Coast of Colon Province, Rep. de Panama.
- 1420 - 1440 R. Umaña
Arrecifes Artificiales en la Costa Caribe de Costa Rica.
- 1440 - 1500 Coffee Break

1500 - 1520	H. Garcés Application of Bioenergetics Modelling to Fish Growth in Ponds
1520 - 1540	J. Parrish Megaplankton and the Feeding of Deep Water Snappers
1540 - 1610	H. Guzmán & J. Cortés Sociedad Latinoamericana de Arrecifes Coralinos.
1610 - 1640	W. Wiebe CARICOMP
1645 - end	AMLC General Assembly

(*) presenter of paper
(**) out of format context due to late registration

20th through 22nd August Field Trips with ECOTOURS, S.A.



Participants of the 25th Annual and Anniversary Meeting of the Association of Marine Laboratories of the Caribbean, Smithsonian Tropical Research Institute, Panama. August 17 - 22, 1992.

Participantes de la 25a. Reunión Anual y de Aniversario de la Asociación de Laboratorios Marinos del Caribe, Instituto Smithsonian de Investigaciones Tropicales, Panamá. 17 - 22 de agosto de 1992.