

## Potential of the HSP70 protein family as biomarker of *Crassostrea virginica* under natural conditions (Ostreoida: Ostreidae)

Ingrid Camarena-Novelo<sup>1</sup>, Zayil Salazar-Campos<sup>2</sup>, Alfonso-V. Botello<sup>3</sup>,  
Susana Villanueva-Fragoso<sup>3</sup>, Irma Jiménez-Morales<sup>4</sup>, Reyna Fierro<sup>4</sup>  
& Humberto González-Márquez<sup>2\*</sup>

1. Posgrado en Biología Experimental. División de Ciencias Biológicas y de la Salud. Universidad Autónoma Metropolitana. Av. San Rafael Atlizco N° 187, Colonia Vicentina, Iztapalapa 09340, Ciudad de México; ingridcamarena@hotmail.com
2. Laboratorio de Expresión Génica. División de Ciencias Biológicas y de la Salud. Universidad Autónoma Metropolitana. Av. San Rafael Atlizco N° 187, Colonia Vicentina, Iztapalapa 09340, Ciudad de México; zayil.salazar@gmail.com, hgm@xanum.uam.mx
3. Laboratorio de Contaminación Marina, Instituto de Ciencias del Mar y Limnología. Universidad Nacional Autónoma de México. Circuito Exterior s/n, Coyoacán, Ciudad Universitaria 04510 Ciudad de México; suvilla11@gmail.com, gatoponcho2015@gmail.com
4. Laboratorio de Andrología. División de Ciencias Biológicas y de la Salud. Universidad Autónoma Metropolitana. Av. San Rafael Atlizco N° 187, Colonia Vicentina, Iztapalapa 09340, Ciudad de México; jimmi@xanum.uam.mx, reyna@xanum.uam.mx

\* Correspondence

Received 06-XII-2018. Corrected 02-V-2019. Accepted 06-V-2019.

**Abstract:** The HSP70 proteins are used as exposure biomarkers, and the oyster *Crassostrea virginica* is considered as a bioindicator organism in environmental assessment. According to the season, the level of expression of the HSP70 family in wild oysters has not been characterized before. The aim of this work was to analyze the expression of the HSP70 family as an exposure biomarker using *C. virginica* gills from individuals and groups of oysters from the Tampamachoco Lagoon under natural conditions. Ninety oyster samples were collected at locations from the Tampamachoco Lagoon during the dry and “north winds” seasons. One group of oysters was maintained under laboratory conditions and exposed to thermal stress. The pH, temperature, salinity, and dissolved oxygen (DO<sub>2</sub>) were measured inside the brackish Tuxpam-Tampamachoco system. Salinity and DO<sub>2</sub> were outside the limits recommended for brackish systems in both seasons. The electrophoresis and immunodetection assay of HSP70 were performed using proteins from oyster gills. The HSP73, HSP72 and HSP69 isoforms were expressed in dry season tissue samples, while only the HSP73 and HSP72 isoforms were detected in north winds season tissue samples and positive control tissue samples. The HSP73 isoform has not been previously reported in *C. virginica*. To evaluate the expression of HSP70 protein family at individual and group levels from wild animals, it is also important to determine a seasonal baseline expression.

**Key words:** biomarker; heat shock protein; environmental assessment; *Crassostrea virginica*.

Camarena-Novelo, I., Salazar-Campos, Z., Botello, A-V., Villanueva-Fragoso, S., Jiménez-Morales, I., Fierro, R. & González-Márquez, H. (2019). Potential of the HSP70 protein family as biomarker of *Crassostrea virginica* under natural conditions (Ostreoida: Ostreidae). *Revista de Biología Tropical*, 67(3), 572-584.

Biomarkers are measurements at any biological level that provide information concerning adverse sublethal effects due to physical, chemical or biological stressors in the laboratory or in wild organisms. Biomarkers are divided into two principal types: exposure biomarkers, which are adaptive responses that prevent damage caused by a stressor; and effect biomarkers, which refer to physiological responses to a stressor from which the organism or cell can recover (Ortiz-Zarragoitia & Cajaraville, 2006; Sarkar, Ray, Shrivastava, & Sarker, 2006). Protein biomarkers are important tools in environmental assessment because they reflect early interactions of any type of stressor with the cell, which, as a consequence, alters its physiology and protein expression (Fent, 2004; Farcy, Voiseux, Lebel, & Fievet, 2009).

HSPs are found in virtually all-living organisms and evolutionarily, are highly conserved proteins. The HSP70 family is divided into two groups: constitutive HSP70 proteins have a high basal level and are softly induced by stress; inducible HSP70 proteins are virtually absent under normal conditions, and their expression increases dramatically under stress. In eukaryotes, HSP70 can be found in any part of a cell: in the cytoplasm, mitochondria, and endoplasmic reticulum, as well as inside or outside of any other organelle or compartment; however, most HSPs are located in the nucleus. After any kind of shock or stress, the HSP content in the nucleus gradually decreases, while it increases in the cytoplasm, serving as a mediator in protein biosynthesis systems and ensuring the protein resistance of the protein synthesis apparatus (Ait-Aissa, Porcher, Arriago, & Lambre, 2000; Piano, Asirelli, Caselli, & Fabbri, 2002; Arya, Mallik, & Lakhotia, 2007).

Such a universal spread of HSP70 indicates that they play an important role in the cell, and both the constitutive and inducible HSP70 isoforms are involved not only in protecting cells from heat shock but also in many other cellular processes basically everywhere a partial or full protein unfolding event occurs. The increased expression of HSPs has been shown to be protective, mainly mediated by

the HSPs capacity to act as molecular chaperones, preventing inadequate protein folding and transporting denatured proteins to target organelles for renaturation, degradation, or repair. It was showed that HSPs played critical roles in modulating apoptotic cascades (Cruz-Rodríguez & Chu, 2002; Ivanina, Taylor, & Sokolova, 2009).

The HSP70 family are included on the proteome of marine invertebrates such as mussels (*Mytilus edulis*), Pacific oysters (*Crassostrea gigas*), and echinoderms (*Strongylocentrotus purpuratus*) and are involved in the renaturation, degradation and repair of damaged proteins in organisms exposed to stressors such as chemicals, heat-stress, UV radiation, pH variations, salinity stress and dissolved oxygen variations (Cruz-Rodríguez, Baucum, Soudant, Chu, & Hale, 2000; Cruz-Rodríguez & Chu, 2002; Gazeau, Quiblier, Jansen, Gattuso, Middelburg, & Heip, 2007; Geffard, Geffard, Amiard, His, & Amiard-Triquet, 2007). HSP70 family protein expression in *Crassostrea virginica* has been reported before by Cruz-Rodríguez et al. (2000) and Cruz-Rodríguez & Chu (2002), in oysters exposed to PCB's and HAP's respectively; and Ivanina et al. (2009) in oysters exposed at thermal stress and cadmium; it has also been reported in other oysters species as *Crassostrea gigas*, *Ostrea edulis*, *Mytilus edulis*, *Dressenia polymorpha*; but any reported on natural conditions.

The HSP family has been used as protein biomarkers, has evaluated in bioindicator organisms such as bivalves, particularly oysters, in environmental assessment since their expression allows the detection of damages caused by any kind of stressor, and it is possible to apply the results onto the rest of the ecosystem biota (LeBlanc & Bain, 1997; Eason & O'Halloran, 2002; Zurita et al., 2005). Marine mollusks, such the oyster *Crassostrea virginica* (Gmelin, 1791) have been used worldwide as bioindicators to assess the impact of pollutants in coastal lagoons ecosystems. It is due to the reason that they are widely distributed and their capability to respond to natural impacts such as hurricanes, storms, extreme rainfall, or pollution,

and its ability of synthesized stress response proteins to protect homeostasis during environmental fluctuations.

Coastal lagoons are ecosystems with high primary productivity, oxygen producer and sustain reproduction and nurseries for alimentary and economically important species (Geffard et al., 2007; Macauley, Summers, & Engle, 1997). Environmental monitoring of coastal lagoons by direct measurements in water and sediment coupled with biomarker assessment in bioindicator organisms would provide information to prevent, legislate and remediate the effects of pollution.

The brackish Tuxpam-Tampamachoco estuarine-lagoon system is located at the north of Veracruz, Mexico, the lagoon is approximately 2 km from the ocean. This site encounters one regime of summer rains and a season of rains accompanied by cold wind from the north during winter, locally known as “north winds season” with the entry of humidity from the

Gulf of Mexico, which makes up more than 10.2 % of the total annual rains (Fig. 1).

To our knowledge, up today, there are few protein related ecotoxicological studies in Tampamachoco Lagoon. However the research group led by Botello, De la Lanza, & Villanueva (2016) evaluated sediment cores from the brackish Tuxpam-Tampamachoco estuarine-lagoon system to reconstruct the environmental conditions, through deposition of the sediment, from 1908 to 2010, finding contamination by polycyclic aromatic hydrocarbons (PAH's), metals and pesticides, with a maximum in 1990-1995. Trends indicate that the concentrations decreased in time. These concentrations became lower than the Effects Range-Low (ERL) and Effects Range-Median (ERM) (Long, Macdonald, Smith, & Calder, 1995), so they no longer cause damage in benthic organisms.

The seasonal pattern of the baseline expression of proteins should be established with the

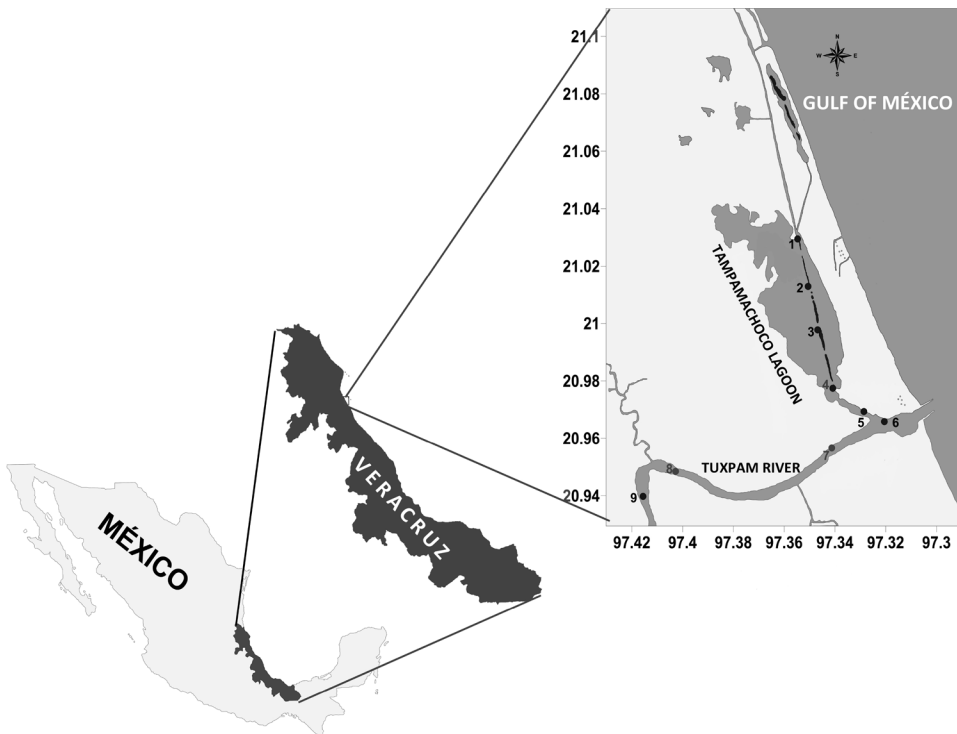


Fig. 1. Brackish Tuxpam-Tampamachoco estuarine-lagoon system.

purpose of identifying the baseline constraints and tradeoffs generated by natural conditions (Portner, 2001). The aim of this work was to analyze the expression of the HSP70 family as an exposure biomarker using *C. virginica* gills from individuals and groups of oysters from the Tampamachoco Lagoon under natural conditions at different seasons and thermal stressed.

## MATERIALS AND METHODS

**Physical chemistry parameters:** Physical chemistry parameters, such as pH, temperature (°C), dissolved oxygen (DO<sub>2</sub> mg/L), and salinity were measured at ten geographical inside the brackish estuarine-lagoon system in both dry and north winds seasons during the collections (Fig. 1). They should not be considered in an isolated way; for instance, salinity, DO<sub>2</sub> and temperature combined caused changes in protein expression from the dry season samples.

***C. virginica* samples:** Forty-five oysters were sampled at collection station into Tampamachoco Lagoon during both the dry season (April 2013) and the North winds season (January 2014). Ten individuals from each season were randomly used as individual samples and the rest of the sampled oysters were used as grouped samples. Oysters were chipped and the gills were dissected and placed in RIPA lysis buffer at 4 °C until further analysis (N = 90).

Ten oysters from each season were placed in a 96 liter aquarium filled with artificial sea water made with Instant Ocean® (Kent Marine, Acworth, GA, USA) under the following conditions: pH 7.9; NH<sub>3</sub>-NH<sub>4</sub>, > 0.02 mg/L; PO<sub>4</sub>, 0.25 mg/L; NO<sub>3</sub>, > 5 mg/L; NO<sub>2</sub>, > 0.1 mg/L; temperature 23 ± 2 °C; salinity 20; and fed with Marine Snow (Two Little Fishes Inc.) at approximately 1x10<sup>10</sup> cells per liter. Twenty-one days later, the organisms were exposed to thermal stress (42 °C) for 2 hours, and protein analysis was performed both individually and in-group samples and were used as the positive control (PC).

**Protein extraction, quantification and PAGE:** Frozen samples were crushed and centrifuged at 16000×g for 10 minutes. The supernatant was frozen at -20 °C until analysis. The protein quantification was performed by the Bradford (1976) method: 30 µg of protein was diluted in sample buffer (Tris-HCl 0.5 M, pH 6.8; glycerol 30 %; SDS 4 %; and 5 % bromophenol blue) at a 1:2 proportion, then boiled for 5 min at 95 °C and immediately loaded onto a 10 % polyacrylamide gel topped with 4 % polyacrylamide stacking gels (Laemmli, 1970). PAGE (electrophoresis) was run for 2 hours at 25 mA by gel in a Mini-PROTEAN Tetra Cell electrophoresis chamber (Bio-Rad) with running buffer (25 mM Tris; 192 mM glycine; and 0.1 % SDS, pH 8.3) at room temperature. Gels were fixed for one hour with fixing solution (40 % ethanol and 10 % acetic acid); then they were stained for 1 hour with 0.25 % Coomassie Brilliant Blue G-250 dissolved in fixing solution; and finally de-stained with the fixing solution. Two types of PAGE were run: one with ten individuals from each season and two stressed individuals and one with five groups of five individuals from each season and four groups of five stressed individuals were loaded in each lane (N = 90).

**Immunodetection:** After electrophoresis, the proteins were transferred to a nitrocellulose membrane (Bio-Rad 162-0112) using a transfer buffer (glycine 0.192 M; Tris 0.025 M; and 20 % methanol v/v); the transfer was carried out 1:30 hours using a Criterion-Blotter (Bio-Rad 170-4071) at 120 V immersed in ice. The nitrocellulose membranes were then blocked for 1 hour in PBST<sub>20</sub> blocking buffer (1.4 mM KH<sub>2</sub>PO<sub>4</sub>; 8 mM Na<sub>2</sub>HPO<sub>4</sub>; 140 mM NaCl; 2.7 mM KCl; 0.1 % Tween20; and 5 % nonfat dry milk, pH 7.4). Blots were incubated overnight at 14 °C with anti-HSP70 (Sigma H5147) and were rinsed three times (10 min) with PBST; then, they were incubated for two hours at room temperature with anti-mouse IgG (Sigma A9044). Excess secondary antibody

was removed by three washes (10 min) with PBST, and the sites of the binding antibody were visualized by incubation with Clarity Western ECL-Substrate (17050060 Bio-Rad).

**Image analysis:** The molecular weight from visible lanes in PAGE was determined with Rf values obtained from acrylamide gel images (Lambin, Rochu, & Fine, 1976). Immunodetection images were captured with an LG-1500 photo-documenter, and relative intensity units (RIU) were quantified with ImageJ software (Schneider, Rasband, & Eliceiri, 2012). The RIU for each isoform was calculated by taking the ratio between each band's RIU with its own RIU actin band. The results are expressed as the average of three independent assays.

**Statistical Analysis:** The physicochemical parameters of water were compared with Student's T-test. Protein expression differences were analyzed for statistical significance using one-way ANOVA, and pair-wise comparisons were performed according to Tukey's HSD method if a significance difference was detected. Significance was considered at  $P > 0.05$  the statistical analysis was performed using IBM SPSS Statics software (IBM, 2017).

## RESULTS

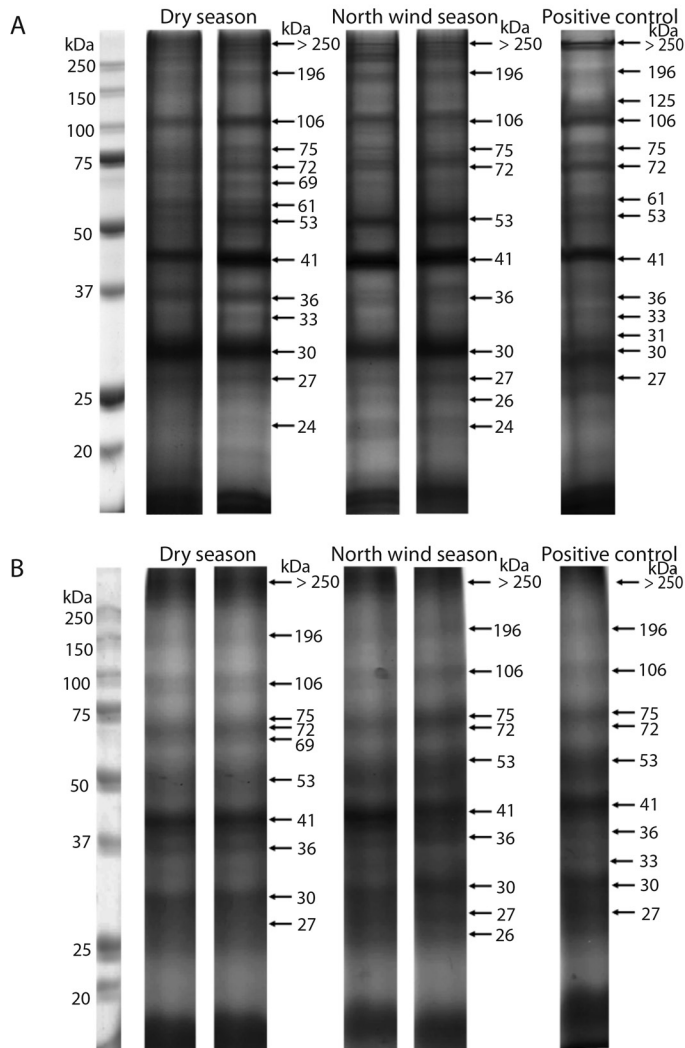
**Physical chemistry parameters:** Physical chemistry parameters in water were measured along the Tuxpam-Tampamachoco brackish estuarine-lagoon system at ten geographical points in both seasons (Table 1). The average values were pH of  $8.5 \pm 0.19$  and  $8.29 \pm 0.12$ ; temperature of  $26.04 \pm 0.93$  and  $19.10 \pm 0.32$  °C; salinity of  $31.07 \pm 4.59$  and  $31.40 \pm 3.72$ ; and DO<sub>2</sub> of  $10.15 \pm 2.56$  and  $6.21 \pm 0.68$  mg/L in the dry and north winds seasons, respectively. Differences in temperature and DO<sub>2</sub> were statically significant, but pH and salinity were similar for both seasons, both whit a 95 % confidence interval ( $P < 0.05$ ).

**Sample characterization:** The average oyster weight was  $58 \pm 5.2$  g and  $51 \pm 7.1$  g; the average size was  $7.40 \pm 1$  cm and  $6.8 \pm 0.6$  cm; and the average protein yield was  $5.9 \pm 2$  mg/g and  $7.5 \pm 1.9$  mg/g from the dry and north winds seasons, respectively, all of them without statically significant difference with a 95 % confidence interval ( $P < 0.05$ ).

**PAGE-SDS:** The electrophoretic pattern of total soluble proteins from individuals and five grouped samples of *C. virginica* gills from the dry season, the north winds season,

TABLE 1  
Physical chemistry parameters measured in the dry and north winds seasons

	Geographical points		pH		Temperature (°C)		Salinity (UPS)		DO <sub>2</sub> (mg/L)	
	Latitude	Longitude	Dry	Norths	Dry	Norths	Dry	Norths	Dry	Norths
1	97°35'47"	21°02'94"	8.08	8.08	26.00	19.00	33.94	26.00	7.23	6.49
2	97°35'04"	21°01'25"	8.25	8.21	26.00	19.00	33.88	34.00	8.21	5.35
3	97°34'66"	20°99'75"	8.38	8.44	25.00	19.00	33.87	33.00	8.44	6.11
4	97°34'08"	20°97'72"	8.37	8.43	25.00	19.00	33.75	34.00	8.24	5.35
5	97°32'94"	20°96'91"	8.40	8.39	25.00	19.00	34.10	30.00	8.25	7.26
6	97°32'05"	20°96'60"	8.49	8.24	26.00	19.00	31.44	35.00	10.27	7.10
7	97°34'11"	20°95'44"	8.61	8.21	27.00	19.00	27.07	36.00	14.44	6.57
8	97°40'27"	20°94'86"	8.71	8.40	28.00	19.00	24.39	31.00	13.57	6.34
9	97°41'56"	20°93'98"	8.65	8.25	27.00	19.00	22.77	30.00	12.66	5.50
10	97°30'59"	20°26'90"	8.53	8.28	25.00	20.00	35.50	25.00	10.19	6.04



**Fig. 2.** Total soluble protein electrophoretic patterns from *C. virginica* gills. Each lane represents the protein from one individual (A) and grouped samples (B). The first lane is the molecular weight marker.

and PC are shown in figure 2 (Fig. 2). Similar concentrations of protein were loaded in each lane; nevertheless, different patterns of bands were observed between seasons. For example, the 125 kDa band appeared only in individual samples of the positive control. Another 69 kDa band appears only in the dry season, in both individual and clustered samples. Also, a 61 kDa band was observed in the dry season, only in individual samples, but not after pooling (Table 2).

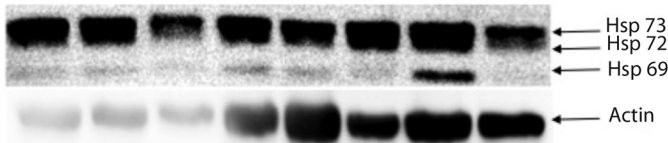
**Immunodetection:** The anti-HSP70 immunodetection of proteins from oyster gills showed the presence of three isoforms, HSP73, HSP72 and HSP69, in both, the individual and grouped samples; although the first two were expressed in all samples, HSP69 was only expressed in both individual and grouped samples from the dry season (Fig. 3).

**HSP expression levels seasonal variation:** Semi-quantitative expression analysis of HSP was done on three isoforms, HSP73, HSP72 and HSP69, using RIU. The average HSP73

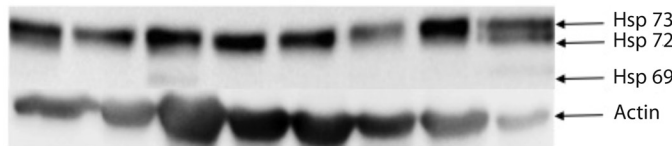
TABLE 2  
Bands observed in PAGE from Individual or Grouped Samples of oyster gills

Molecular weight (kDa)	SEASON		CONTROL
	Dry Season	North winds season	Positive control
125	—	—	Individual
69	Individual and Group samples	—	—
61	Individual	—	—
33	Individual	—	Individual
26	—	Individual and Group samples	—
24	Individual	Individual	—

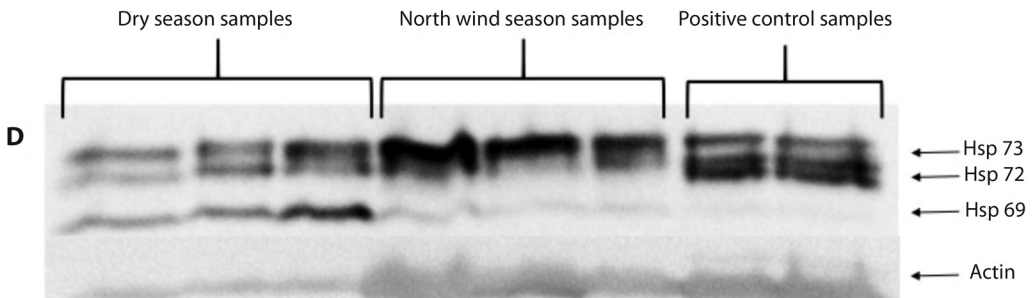
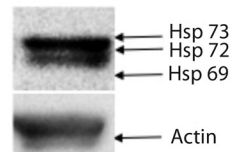
**A** Dry season samples



**B** North wind season samples



**C** Positive control samples



**Fig. 3.** Representative HSP family immunodetection. In individual (A, B, C) and grouped (D) samples: HSP73 and HSP72 isoform expression is observed in all samples, and the HSP69 isoform can only be observed in both individual (A, B) and grouped (D) samples in the dry season.

from individual and grouped samples was 1.30, 0.52, 0.44, 0.40, 0.66 and 0.21 RIU, respectively (Fig. 4), and the dry season and PC individual samples showed higher expression than the other ones.

The average HSP72 from individual and grouped samples was 0.19, 0.66, 0.09, 0.33, 0.42 and 0.20 RIU, respectively (Fig. 5). The grouped dry season and individual PC samples showed higher expression than the other ones.

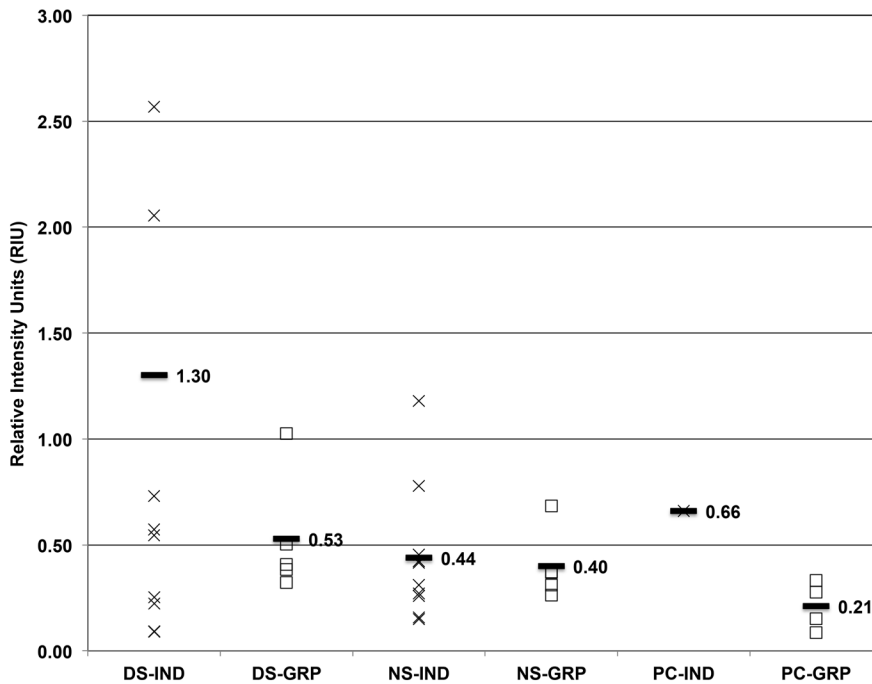


Fig. 4. HSP73 expression (RIU) in *C. virginica* gills from the dry season (DS), north winds season (NS) and positive control (PC) measured on individual (IND-X) and grouped (GRP-□) samples. Average (—) from individual and grouped samples.

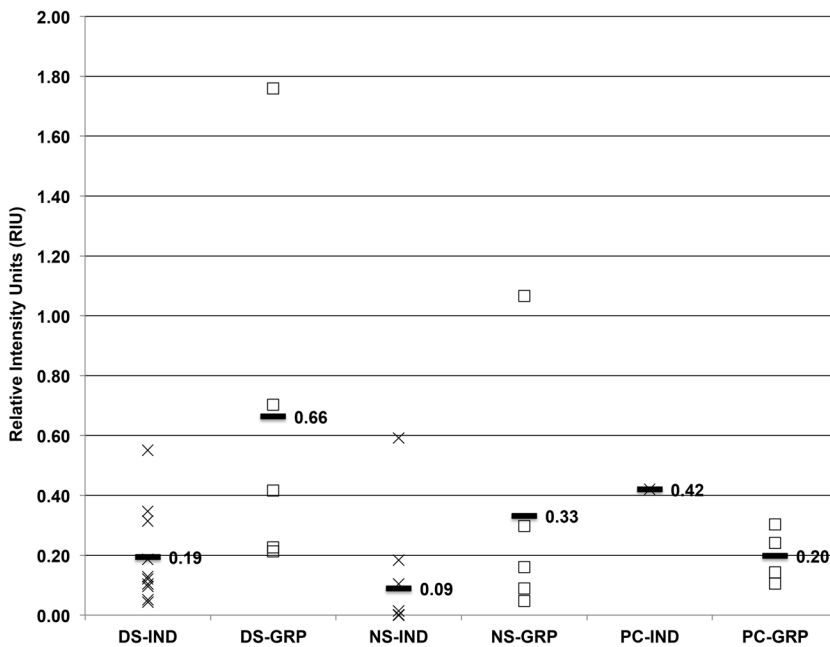


Fig. 5. HSP72 expression (RIU) in *C. virginica* gills from the dry season (DS), north winds season (NS) and positive control (PC) measured on (IND-X) and grouped (GRP-□) samples. Average (—) from individual and grouped samples.



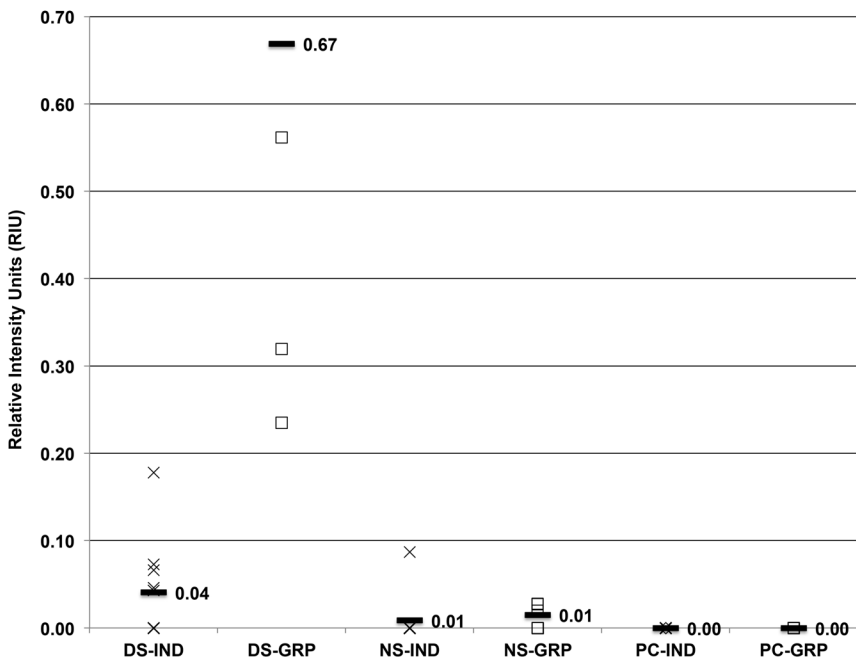


Fig. 6. HSP69 expression (RIU) in *C. virginica* gills from the dry season (DS), north winds season (NS) and positive control (PC) measured on individual (X) and grouped (—) samples.

The average HSP69 from individual and groups samples was 0.04, 0.67, 0.01, 0.01, 0.00 and 0.00 RIU, respectively (Fig. 6). This isoform was expressed in 50 % and 100 % of individual and grouped samples, respectively, from the dry season, and its expression in other samples was not significant.

Statistically (ANOVA), HSP73 and HSP72 expressions did not show significant differences among seasons, individual and grouped samples with a 95 % confidence interval ( $P < 0.05$ ). However, HSP69 expression in individual and grouped samples was significantly different with a 95 % confidence interval ( $P < 0.05$ ) in the dry season in comparison to the other seasons.

## DISCUSSION

Similar to this work, there are studies where HSP expression is used as a stress biomarker in oysters. Snyder, Girvetz, & Mulder

(2001) examined HSP responses of *Mytilus galloprovincialis* and *Haliotis rufescens* exposed to thermal stress, degraded oil, heptachlor, phenobarbital,  $\beta$ -naphthoflavone and pentachlorophenol; Hamdoun, Cheney, & Cherr (2003) assessed HSP protein and *hsp* gene expressions as a response to heat stress in *Crassostrea gigas*; and Piano et al. (2002) evaluated HSP protein expression in *Ostrea edulis* exposed to heat stress. All these studies analyzed exposed organisms to a specific stressor, but none analyzed HSP from oyster gills in natural conditions.

When PAGE was analyzed, different protein expression was observed regardless of the sample (individual or grouped) or season. Because these results were repeated and consistent, it would be interesting to identify the different proteins present in each season to propose them as biomarkers.

In this work, we found three HSP isoform expressions (HSP73, HSP72 and HSP69) from

the gills of oysters collected in two different seasons from a site reported to have little pollution (Botello et al., 2016) relative to concentrations that are known to affect benthic organisms (Long et al., 1995). It is possible that this expression has been generated due to fluctuations in physical chemistry parameters, particularly in HSP69, since it was only expressed in the dry season, where the salinity (31 UPS) and dissolved oxygen (10.1 mg/L) were higher than recommended by Shumway (1996), and United Nations Environment Programme (14-28UPS; and 9.5 mg/L at < 20 °C, respectively). In addition to these parameters, the temperature was 26 °C in the dry season, warmer temperatures led to earlier and greater growth rates, and the larger final size increased the metabolic activity of the oysters (Abbe, Riedel, & Sanders, 2000). In the dry and north winds seasons, the pH was approximately 8, which is within the range of optimal pH for brackish waters; therefore, this parameter did not have an influence on HSP expression.

The HSP family isoform expression seems to be species and stressor dependent; for example, Chapple, Smerdon, & Hawkins (1997) reported the HSP78, HSP72 and HSP70 isoforms expression in *M. edulis*, but they did not determine if they were constitutive or induced. Snyder et al. (2001) reported that the HSP74, HSP70 and HSP67 isoforms were induced in *Mytilus galloprovincialis* and *Halio-tis rufescens* when exposed to thermal stress and xenobiotics (e.g., 2-methoxyethanol). Cruz-Rodríguez & Chu (2002) stated that the HSP71 and HSP69 isoforms expression was induced when *C. virginica* was exposed to aromatic polycyclic hydrocarbons. Hamdoun et al. (2003) and Piano et al. (2002) found HSP77 and HSP72 to be constitutive isoforms, and HSP69 an induced isoform by thermal stress in *C. gigas* and *Ostrea edulis*, respectively. In this work, HSP73 isoform expression was present in all samples, HSP72 isoform expression was variable, and HSP69 was only expressed in individual and grouped dry season samples. The HSP73 isoform has not previously been reported in *C. virginica* adults.

Boutet, Tanguy, Rousseau, Auffret, & Moraga (2003) found an inverse relationship between the expression of HSP70 and metal concentrations in *C. gigas*. In other species of bivalves, Piano, Valbonesi, & Fabbri (2004) reported that after thermal stress, induced isoforms were not expressed in *M. galloprovincialis*, *Tapes phillippinarum* and *Scapharca inaequalis*; nevertheless, the constitutive isoforms were significantly elevated. The HSP expression from PC oysters that were under thermal stress was lower than that of the wild oysters. Of particular interest is the expression of HSP69 during the dry season, where more than 50 % of the dry season individual and grouped samples expressed it, without losing sight of the fact that pollution has gradually declined (Botello et al., 2016). This expression was also observed by Piano et al. (2002) in *O. edulis* and Hamdoun et al. (2003) in *C. gigas*, who proposed that this isoform was induced by heat stress; Cruz-Rodríguez & Chu (2002) reported it in *C. virginica* as a response to polycyclic aromatic hydrocarbons.

The challenge of using proteins as biomarkers is determining the range of basal expression and the moment at which they are expressed due to an adverse effect or compensatory response that protects the organism against environmental damage or xenobiotics (Chapple et al., 1997; Farcy et al., 2009; Luna-Acosta, Bustamante, Godefroy, Fruitier-arnaudin, & Thomas-guyon, 2010). Therefore, it is essential to determine the baseline levels of HSP before comparison with data from contaminated sites. Moreover, as we studied individual and grouped samples, the interpretation of the results was improved in comparison to most reports that were made with organism's pulls.

The present study demonstrates that the HSP70 family of proteins could be used as unspecific stress biomarker in oysters. Environmental conditions have been shown to have an effect on *C. virginica* protein expression because of the different electrophoretic patterns obtained from the total soluble proteins of gills, as well as the different expression levels of the HSP family isoforms. Studies on the changes

in environmental conditions, such as pH, temperature, DO<sub>2</sub>, and salinity, should be directed towards measuring the damage they cause at the sub-cellular, cellular and tissue levels before exposure of an organism to any xenobiotic. The stress could be detected not only by the expression of inducible HSP70 isoforms but also by the expression levels of constitutive isoforms, which can be over-expressed or inhibited depending on environmental conditions. The main difficulty in assessing biomarkers is the natural interference of environmental factors with biological responses, making the interpretation rather difficult.

This work presents similar results obtained from both individual and grouped samples; although the evaluation of individual organisms slightly increased the variability, this handling offers the opportunity to more accurately determine if environmental changes affect low biological scale levels.

**Ethical statement:** authors declare that they all agree with this publication and made significant contributions; that there is no conflict of interest of any kind; and that we followed all pertinent ethical and legal procedures and requirements. All financial sources are fully and clearly stated in the acknowledgements section. A signed document has been filed in the journal archives.

#### ACKNOWLEDGMENTS

Posgrado en Biología Experimental, Universidad Autónoma Metropolitana. CONACYT México scholarship 39050, and register number 233324. Funding: This study was partially supported by CONACYT project 0105961-M and the project ECOS Nord-MEXICO-FRANCE, SEP-CONACYT M10-A02 between the Universidad Autónoma Metropolitana and the Université of Lille 1 Sciences et Technologies. Edmundo Bonilla-González and Iván Bahena-Ocampo for the technical advice. The authors declare no conflicts of interest.

#### RESUMEN

**Potencial de la familia de proteínas HSP70 como biomarcador de *Crassostrea virginica* en condiciones naturales (Ostreoida: Ostreidae).** Las proteínas HSP70 se utilizan como biomarcadores de exposición y el ostión *Crassostrea virginica* es considerado como un organismo bioindicador en evaluaciones ambientales. De acuerdo con la estación, el nivel de expresión de la familia de las HSP70 en ostiones silvestres no ha sido caracterizado. El objetivo de este trabajo fue analizar la expresión de la familia de las proteínas HSP70 como un biomarcador de exposición utilizando branquias de *C. virginica* de manera individual y grupal bajo condiciones naturales. Noventa muestras de ostión se recolectaron en un sitio dentro de la Laguna Tampamachoco durante las estaciones de secas y “nortes”. Un grupo se mantuvo bajo condiciones de laboratorio y expuesto a estrés térmico. El pH, la temperatura, la salinidad y el oxígeno disuelto (DO<sub>2</sub>) se midieron dentro del sistema salobre Tuxpan-Tampamachoco. La salinidad y el DO<sub>2</sub> estuvieron fuera de los límites recomendados para sistemas salobres en ambas estaciones. La electroforesis y el ensayo de inmunodetección se llevaron a cabo con branquias de ostiones. Las isoformas HSP73, HSP72 y HSP69 se expresaron en tejido de las muestras de la época de secas, mientras que solamente las isoformas HSP73 y HSP72 se detectaron en tejido de las muestras de época de nortes y control positivo. La isoforma HSP73 no ha sido reportada previamente en *C. virginica*. Para evaluar la expresión de la familia de las proteínas HSP70 a nivel individual y grupal de organismos silvestres es importante determinar una línea de base de expresión estacional.

**Palabras clave:** biomarcador; proteínas de estrés térmico; evaluación ambiental; *Crassostrea virginica*.

#### REFERENCES

- Abbe, G. R., Riedel, G. F., & Sanders, J. G. (2000). Factors that influence the accumulation of copper and cadmium by transplanted eastern oysters (*Crassostrea virginica*) in the Patuxent River, Maryland. *Marine Environmental Research*, 49(4), 377-396.
- Ait-Aissa, S., Porcher, J., Arrigo, A., & Lambre, C. (2000). Activation of the hsp70 promoter by environmental inorganic and organic chemicals: relationships with cytotoxicity and lipophilicity. *Toxicology*, 145(2-3), 147-157.
- Arya, R., Mallik, M., & Lakhota, S. C. (2007). Heat shock genes - integrating cell survival and death. *Journal of Biosciences*, 32(3), 595-610.
- Botello, A. V., De la Lanza, E. G., & Villanueva, F. S. (2016). *Laguna de Tampamachoco, Veracruz, México. Características y Diagnóstico Ambiental*

- 2009-2012. Ciudad de México, México: Editorial Académica Española.
- Boutet, I., Tanguy, A., Rousseau, S., Auffret, M., & Moraga, D. (2003). Molecular identification and expression of heat shock cognate 70 (hsc70) and heat shock protein 70 (hsp70) genes in the Pacific oyster *Crassostrea gigas*. *Cell Stress Chaperon*, 8(1), 76-85.
- Bradford, M. M. (1976). A rapid and sensitive method for the quantitation of microgram quantities of protein utilizing the principle of protein-dye binding. *Analytical Biochemistry*, 72, 248-254.
- Chapple, J. P., Smerdon, G. R., & Hawkins, A. J. S. (1997). Stress-70 protein induction in *Mytilus edulis*: Tissue-specific responses to elevated temperature reflect relative vulnerability and physiological function. *Journal of Experimental Marine Biology and Ecology*, 217, 225-235.
- Cruz-Rodríguez, L. A., Baucum, A. J., Soudant, P., Chu, F. L. E., & Hale, R. C. (2000). Effects of PCBs sorbed to algal paste and sediments on the stress protein response (HSP70 family) in the eastern oyster, *Crassostrea virginica*. *Marine Environmental Research*, 50, 341-345.
- Cruz-Rodríguez, L. A., & Chu, F. L. E. (2002). Heat-shock protein (HSP70) response in the eastern oyster, *Crassostrea virginica*, exposed to PAHs sorbed to suspended artificial clay particles and to suspended field contaminated sediments. *Aquatic Toxicology*, 60, 157-168.
- Eason, C., & O'Halloran, K. (2002). Biomarkers in toxicology versus ecological risk assessment. *Toxicology*, 181-182, 517-521.
- Farcy, E., Voiseux, C., Lebel, J. M., & Fievet, B. (2009). Transcriptional expression levels of cell stress marker genes in the Pacific oyster *Crassostrea gigas* exposed to acute thermal stress. *Cell Stress Chaperon*, 14(4), 371-380.
- Fent, K. (2004). Ecotoxicological effects at contaminated sites. *Toxicology*, 205(3), 223-240.
- Gazeau, F., Quiblier, C., Jansen, J. M., Gattuso, J. P., Middelburg, J. J., & Heip, C. H. R. (2007). Impact of elevated CO<sub>2</sub> on shellfish calcification. *Geophysical Research Letter*, 34. DOI: 10.1029/2006GL028554
- Geffard, A., Geffard, O., Amiard, J. C., His, E., & Amiard-Triquet, C. (2007). Bioaccumulation of metals in sediment elutriates and their effects on growth, condition index, and metallothionein contents in oyster larvae. *Archives of Environmental Contamination and Toxicology*, 53, 57-65.
- Hamdoun, A. M., Cheney, D. P., & Cherr, G. N. (2003). Phenotypic plasticity of HSP70 and HSP70 gene expression in the Pacific oyster (*Crassostrea gigas*): implications for thermal limits and induction of thermal tolerance. *Biological Bulletin*, 205(2), 160-169.
- Ivanina, A. V., Taylor, C., & Sokolova, I. M. (2009). Effects of elevated temperature and cadmium exposure on stress protein response in eastern oysters *Crassostrea virginica* (Gmelin). *Aquatic Toxicology*, 91(3), 245-254.
- IBM Corp. (2017). *IBM SPSS Statistics for Macintosh* (Version 25.0). Armonk, NY: IBM Corp.
- Laemmli, U. K. (1970). Cleavage of structural proteins during the assembly of the head of bacteriophage T4. *Nature*, 227(5259), 680-685.
- Lambin, P., Rochu, D., & Fine, J. M. (1976). A new method for determination of molecular weights of proteins by electrophoresis across a sodium dodecyl sulfate (SDS)-polyacrylamide gradient gel. *Analytical Biochemistry*, 74(2), 567-575.
- LeBlanc, G. A., & Bain, L. J. (1997). Chronic Toxicity of Environmental Contaminants: Sentinels and Biomarkers. *Environmental Health Perspectives*, 105(Supp. 1), 65-80.
- Long, E. R., Macdonald, D. D., Smith, S. L., & Calder, F. D. (1995). Incidence of adverse biological effects within ranges of chemical concentrations in marine and estuarine sediments. *Environmental Management*, 19, 81-97.
- Luna-Acosta, A., Bustamante, P., Godefroy, J., Fruitier-arnaudin, I., & Thomas-Guyon, H. (2010). Seasonal variation of pollution biomarkers to assess the impact on the health status of juvenile Pacific oysters *Crassostrea gigas* exposed in situ. *Environmental Science and Pollution Research International*, 17(4), 999-1008.
- Macauley, J. M., Summers, J. K., & Engle, V. D. (1997). Estimating the ecological condition of the estuaries of the gulf of Mexico. *Environmental Monitoring and Assessment*, 57, 59-83.
- Ortiz-Zarragoitia, M., & Cajaraville, M. P. (2006). Biomarkers of exposure and reproduction-related effects in mussels exposed to endocrine disruptors. *Archives of Environmental Contamination and Toxicology*, 50, 361-369.
- Piano, A., Asirelli, C., Caselli, F., & Fabbri, E. (2002). Hsp 70 expression in thermally stressed *Ostrea edulis*, a commercially important oyster in Europe. *Cell Stress Chaperon*, 7(3), 250-257.
- Piano, A., Valbonesi, P., & Fabbri, E. (2004). Expression of cytoprotective proteins, heat shock protein 70 and metallothioneins, in tissues of *Ostrea edulis* exposed to heat and heavy metals. *Cell Stress Chaperon*, 9(2), 134-142.
- Portner, H. O. (2001). Climate change and temperature-dependent biogeography: oxygen limitation of thermal tolerance in animals. *Naturwissenschaften*, 88(4), 137-146.
- Sarkar, A., Ray, D., Shrivastava, A. N., & Sarker, S. (2006). Molecular Biomarkers: their significance and application in marine pollution monitoring. *Ecotoxicology*, 15(4), 333-340.

- Schneider, C. A., Rasband, W. S., & Eliceiri, K. W. (2012). NIH Image to ImageJ: 25 years of image analysis. *Nature Methods*, 9(7), 671-675.
- Shumway, S. E. (1996). Natural Environmental Factors. In V. S. Kennedy, R. I. E. Newell, & A. F. Eble (Eds.), *The Eastern Oyster Crassostrea virginica* (pp. 719). Maryland, U.S.A.: Maryland Sea Grant College.
- Snyder, M. J., Girvetz, E., & Mulder, E. P. (2001). Induction of marine mollusc stress proteins by chemical or physical stress. *Archives of Environmental Contamination and Toxicology*, 41(1), 22-29.
- Zurita, J. L., Jos, A., del Peso, A., Salguero, M., Lopez-Artiguez, M., & Repetto, G. (2005). Ecotoxicological evaluation of the antimalarial drug chloroquine. *Aquatic Toxicology*, 75(2), 97-107.