

Influence of the configuration and heterogeneity of the agroforestry and silvopastoral mosaics on the bird community, Andean Amazon of Colombia

Alexander Velásquez-Valencia^{1,2*} & María Argenis Bonilla-Gomez²

1. Wildlife Research Group, Centro de Investigación de la Biodiversidad Andino Amazónica INBIANAM, Universidad de la Amazonía, Carrera 11 No. 5-69 Barrio Versalles Sede Centro Florencia, Colombia; alexandervelasquezvalencia@gmail.com
 2. Tropical Organism Biology Research Group, Department of Biology, Faculty of Sciences, Universidad Nacional de Colombia, Carrera 30 No. 45-03 Edificio 47, Bogotá D.C., Colombia; mabonillag@unal.edu.co
- * Correspondence

Received 09-V-2018. Corrected 02-IX-2018. Accepted 23-I-2019.

Abstract: General changes in land use have established patterns of modification of native vegetation into agricultural and grazing land. These production systems, as well as social and economic influences, have created diverse landscapes - mosaics composed of varied elements of vegetation cover (forests, crops, pastures, barren fields) that are distributed across spaces in different ways. In this investigation, we determine the distribution patterns of the richness, abundance and diversity of the bird community within the configuration and composition of agroforestry and silvopastoral landscapes. We observed 262 bird species, 6 720 individuals, 23 orders and 54 families within 39 production system mosaics. None of the species accumulation curves in the production systems reached their asymptote, and the calculated estimators predicted a greater number of species than those observed during the survey. In general terms, richness, diversity and equitability indices were highest in the mosaics of agroforestry systems, while abundance and dominance indices were highest in the mosaics associated with silvopastoral and traditional livestock systems. Variables that describe vegetation cover in mosaics have different and independent effects on the diversity of bird assemblages and on the association of land use groups within the mosaics. The positive extreme of the first component contributes to the variance in the model of richness and diversity indices - both the structural components of landscapes and biological components of the assemblages. The area and disposition of different types of elements in the mosaics of the production system landscapes reflect the systematic management of covers, which affects the implications of landscape conservation and restoration practices. Different landscape elements serve as points of contact in the dispersion and distribution of species within these landscapes. The priority of conservation efforts and the first step for the restoration and connectivity of landscapes in the Andean Amazon of Colombia should be the management and protection of covers like old stubble or BFG and BRP. Another approach is the design of landscapes for entire communities of species with respect to certain quantities of habitats in the landscape and the isolation of patches.

Key words: birds; landscape; heterogeneity; diversity; richness; agroforestry; silvopastoral.

Velásquez-Valencia, A. & Bonilla-Gomez, M. A. (2019). Influence of the configuration and heterogeneity of the agroforestry and silvopastoral mosaics on the bird community, Andean Amazon of Colombia. *Revista de Biología Tropical*, 67(1), 306-320.

The widespread conversion of land uses have established patterns related to the modification of native vegetation to uses dominated by agricultural land and livestock production (Foley et al., 2005; Haslem & Bennett, 2008;

Houghton, 2013). These changes, and consequently the effects of the fragmentation of native forests, are of interest for the conservation of biodiversity (Heikkinen, Luoto, Virkkala, & Rainio, 2004; Jeliakov et al., 2016). The

intensification of land use for the establishment of livestock or agricultural crops defines the characteristics of production at the local scale and the basic structure of plant or landscape typological formations (Foley et al., 2005; Velásquez-Valencia et al., 2005) The operation of these types of production systems as well as social and economic influences have created diverse landscapes, mosaics composed of varied elements of vegetation cover (forests, crops, pastures, barren fields) which are distributed across spaces in different ways.

These new structures of the landscape acts as environmental filters altering the distribution patterns of the components of the biological communities, and positively affect predation (Roldán & Simonetti, 2001; Renjifo, 2001; Olson, Dinerstein, Powell, & Wikramanayake, 2002), and parasitism (Laurance & Yensen, 1991; Murcia, 1995; Redford, 1992) and changes the spatial patterns of vegetation cover in landscapes (Lindenmayer & Fischer, 2007). In this sense, both habitat loss and fragmentation operate at different spatial, temporal, habitat and biological organization levels.

Some research has focused on analyzing the pattern of spatial configuration of remaining habitats and their influence on the ability of organisms to persist in these modified landscapes (Trzcinski, Fahrig, & Merriam, 1999; McGarigal & Cushman, 2002; Bennett, Radford, & Haslem, 2006) and the relationship to species richness and abundance, independently of the sensitivity of species to anthropogenic disturbance The size, shape and proximity of the patches and the capacity of the species to use the matrix (Antongiovanni & Metzger, 2005) have been identified as modelers of the distribution patterns of bird diversity (Fahrig, 2003).

The effects of habitat fragmentation on biodiversity (Laurance, 1994; Laurance et al., 2002; Laurance & Vasconcelos, 2009) and the physical degradation of soils caused by intensive farming (Chauvel, Grimaldi, & Tessier, 1991) have been described. Some alternatives have been proposed on how to manage deforestation (Laurance & Gascon, 1997), such as

the use of collective practices of agroforestry, which causes less deterioration and loss of biodiversity and the values of agricultural landscapes for the conservation of nature (Haila, 2002; McGarigal & Cushman, 2002) and the increase in the permeability of the matrix (Antongiovanni & Metzger, 2005).

The relative effects of habitat composition and the configuration of avian biodiversity distribution may be dependent upon the context of the landscape being studied (Jokimäki & Huhta, 1996; Schmiegelow, Machtans, & Hannnon, 1997). Towards the interiors of these systems, abundance and richness of this group decrease in modified habitat gradients from secondary forest to pasture lands (Donald, Green, & Heath, 2001; Kaboli et al., 2001; Peterjohn & Sauer, 1999).

The Andean Amazon in Southeastern Colombia is one of the areas where the colonization front is the most active in the country, and is considered a hot spot of deforestation. In the last 50 years, more than 40 % of the forests of the Andean Amazon territory of the department of Caquetá have been lost to deforestation. This condition is the result of urban growth and the expansion of production systems that are not friendly to the environment, including illicit crop production, livestock production, the exploitation of timber resources and the extraction of mining and energy resources.

For this reason, it is important to determine the distribution patterns of native birds in the Andean Amazon region of Southeastern Colombia. As this region is subject to a deep and continuous transformation of the landscape, it is necessary to identify and explain the patterns that emerge in the bird community with the transformation of the landscape in mosaics with varied vegetation cover patches that are immersed in the matrix of agroforestry and silvopastoral systems. In this sense, the objective of this research was to evaluate the distribution of the richness, abundance and diversity of the bird community in the configuration and composition of the agroforestry and silvopastoral landscapes. To direct the analysis

of the data, the following hypothesis is formulated there is a dependence of the richness and abundance of bird species to the mosaics with a greater number and diversity of patches type of closed vegetation cover in the production systems in the region of the Andean Amazon.

MATERIALS AND METHODS

Area of study: The study was carried out in the southeastern region of the Republic of Colombia, in the department of Caquetá (1°37' N & 75°36' W), in the municipalities of Florencia (1°36' N & 75°36' W), Morelia (1°29' N & 75°43' W), Belén de los Andaquíes (1°24'5 N & 75°52' W) and San Vicente del Caguán (2°06' N & 74°46' W). The average annual temperature and humidity are 25.1 °C and 81 % respectively.

The nature of this region is denominated as dense, exuberant jungle of the interfluves of the Putumayo and Caquetá rivers (Hernández-Camacho, 1992). Nevertheless, this jungle region is affected by the regular deforestation and subsequent burning of its forests for purposes related to livestock, agricultural and illegal crop production. According to alerts from Colombia's Instituto de Hidrología, Meteorología y Estudios Ambientales, IDEAM (2017), this region is home to two of Colombia's early alert deforestation nuclei, and the deforestation dynamic in the region corresponds to 39.70 % of the nation's total deforestation.

In the study area, three production systems have been typified: silvopastoral (SSP), agroforestry (SAF) and traditional or extensive livestock farming (SGT), which determine the economy of the region. In this sense, 25.70 % of the territory of the department is composed of grazing areas, with an annual production of 1 555 443 heads of cattle, and more than 1 500 hectares cultivated in *Hevea* rubber and *Elaeis* African palm.

The study was conducted on 39 mosaics that were established within the three production systems. Each mosaic consisted of a circular area with a radius of 0.5 km (78.5 ha.). The area of each mosaic allowed the inclusion

of multiple types of vegetation cover in the production system landscapes as well as the replication of sampling (Haslem & Bennett, 2008). Given the situation of armed conflict in the study area, the decisions for the selection of mosaics for sampling were made with ease of access and security conditions of the territory taken into account. In total, nine mosaics were established in SSP, eleven in SAF and 19 in SGT.

The classification of the land coverings in the mosaics was made by describing the spatial configuration of the vegetation according to the intensity and heterogeneity of the mosaics by means of calculations with FRAG-STAT Version 3.3 and developed with ArcMap. Two categories of vegetation cover were established; the first corresponds to open vegetation cover, and the second category corresponds to closed vegetation cover.

The elaboration of the cartography and the interpretation of the elements of the landscape were carried out by means of satellite images, following the conceptual and methodological guidelines for the definition and limitation of ecosystems put forth by Etter (1998) and Armenteras, Gast, and Villareal (2003). The verification and adjustment of the map were carried out through fieldwork trips made during the period designated for the capture of primary information.

Table 1 shows the three landscape properties selected to quantify the mosaic variables: the spatial configuration (N = 5), the composition (N = 3) and the aggregation (N = 4) of the vegetation cover. The variables that describe the spatial configuration and the heterogeneity of the mosaics were calculated with FRAG-STAT Version 3.3. All spatial information was developed in ArcMap Version 10.

In total, twelve types of vegetation cover were determined in the mosaics, which were grouped into two categories. The first corresponds to the types of open vegetation cover, consisting of Lagoon (LGN), Pastures with Scattered Trees (PAD), Overgrown Pastures (PEN), Clean Pastures (PPL), Floodplain Pastures (PHO), and River (RIO). The second

TABLE 1
Analysis of landscape properties and variables of the metrics of class and landscape mosaics

Properties of the mosaic	Variable	Abbreviation	Description
Composition	Shannon diversity index	SHDI	Assesses landscape diversity, or heterogeneity, based on diversity of fragments
	Richness of patch	PR	Bears the number of different types of land use/ coverage that exist in the landscape
	Simpson diversity index	SIDI	Assesses, based on probabilities, landscape diversity or heterogeneity
	Number of patches	NP	Measures the fragmentation of landscape
Aggregation	Division	DIVISION	Measures the probability that two cells chosen at random do not belong to the same region
	Landscape form index	LSI	Calculates the relationship between area and perimeter for the combined landscape
	Distance of the nearest neighbor	ENN	Distance to the closest fragment of the same class
Configuration	Mean perimeter area shape	PARA	Perimeter of the group of fragments
	Mean shape index	SHAPE	Measures the complexity of the shape
	Area	AREA	Calculates the area that corresponds to each fragment
	Largest patch index	LPI	Quantifies the percentage of total area occupied by the largest region

category corresponds to closed vegetation cover, consisting of Dense Forest (BDN), Fragmented Forest (BFG), Riparian Forest (BRP), Cultivation of Rubber Trees (CCH), Low Secondary Vegetation (RTT), and High Secondary Vegetation (RTV). The composition of these coverings in the mosaics, their configuration and their structural properties provide the habitat resources to birds present in the production systems of the Andean Amazon region.

In total, 65.4 % of the mosaic areas correspond to types of open vegetation coverage. The largest coverage area type was the Pastures with Scattered Trees, with 37.2 % of the total coverage area, which is double the surface size of Clean Pastures. These two types of coverage were found in 33 and 35 mosaics respectively. Dense forest and secondary vegetation presented the largest areas in closed vegetation types with 12.5 % and 8.5 % respectively of the total coverage area. Significant differences were found in the average coverage area ($F = 17.28$, $g.l. = 252$, $P < 0.05$) and the average of largest patch index (LPI) among the vegetation

coverages in the mosaics ($F = 18.35$, $g.l. = 252$, $P < 0.05$).

Table 2 shows the analysis of the area of land cover in the production system landscapes. The coverage that presented the area of greatest occupation in the mosaics of silvo-pastoral production systems was PPL, as this type of coverage was present in all production systems. The CCH coverage was only present in SAF, and the RIO coverage present only in SGT. The average pasture area (PPL) showed significant differences between SSP and SGT ($F = 3.62$, $g.l. = 44$, $P < 0.05$). The average area of mosaic land cover within the production systems presented significant differences for SSP ($F = 26.35$, $g.l. = 50$, $P < 0.05$), SAF ($F = 12.72$, $g.l. = 78$, $P < 0.05$) and in SGT ($F = 4.31$, $g.l. = 93$, $P < 0.05$).

Bird census: Birds were surveyed by the point count method, in fixed stations within each mosaic. The points were established in a grid on the surface of the mosaic, which consisted of three parallel linear transects, each

TABLE 2
Analysis of the area of land cover in the production system landscapes in
the Andean Amazon region in the Department of Caquetá

Land Cover	SSP			SAF			SGT					
	Area			Area			Area					
	Mean (ha)*	Max (ha)	Total (ha)	Mean (ha)*	Max (ha)	Total (ha)	Mean (ha)*	Max (ha)	Total (ha)			
BDN	5.38	b	26.84	43.00	9.83	b	21.04	78.63	13.90	ab	74.88	264.09
BFG	4.41	b	6.49	22.07	8.53	b	16.85	51.15	8.23	abc	12.85	32.94
BRP	1.54	b	5.66	20.05	1.93	b	13.20	36.59	1.74	bc	6.71	39.91
CCH	-	-	-	-	5.31	b	28.72	69.06	-	-	-	-
LAG	0.42	b	2.51	13.35	0.74	b	2.76	4.46	0.33	c	1.27	3.29
PAD	10.38	a	62.04	436.11	7.14	a	53.07	342.87	13.99	a	72.77	419.73
PEN	7.04	b	23.23	28.15	2.72	b	5.94	13.61	4.11	abc	9.24	32.88
PPL	1.45	b	10.49	37.65	4.06	b	20.45	109.75	7.01	abc	61.95	434.90
PHO	1.03	b	4.15	15.42	1.64	b	6.54	24.53	3.24	abc	11.47	61.50
RIO	-	-	-	-	-	-	-	-	6.39	abc	15.02	44.72
RTV	2.65	b	10.58	47.77	2.71	b	18.49	81.32	5.01	abc	31.92	125.28
RTT	2.38	b	10.94	47.68	1.74	b	9.10	57.41	1.45	abc	9.09	42.07

separated by 500 m. In each transect, three observation points were located 500 m apart from each other. Each census was carried out in a time of 15 min, on a radial surface of 50 m around each point.

All the species seen or heard were registered by a single observer (the first author of the article). The census was carried out in the years 2012 and 2013, with periodic interruptions due to the security conditions in the area. In total, 351 points (9 points in each of the 39 mosaics) were sampled in the whole area and 135 minutes of observation were made within each mosaic, for a total of 5 265 min of observation. The total species richness and the abundance of each species were estimated for each point and mosaic, and the association was carried out to the different vegetation coverings present in the mosaics.

Statistical analysis: In order to evaluate the effort and completeness of species richness based on the sampling effort, accumulation curves were plotted using Chao 2, Chao 1, Jackknife 1 and environmental Jackknife 2 estimators (Colwell & Coddington, 1994; Halffter & Moreno, 2005) calculated in the EstimateS program (Version 8.2). The rarefaction curve

was used to compare the number of species when the samples differed in size (Gotelli & Colwell, 2001), which estimates the species richness as a function of the smallest sample size in the production systems.

In order to geographically represent the species richness observed in the sampling effort and the integrity of the inventory throughout territorial units (geospatial location of the mosaics), the KnobR (Biogeographical Knowledge in R) was performed, which calculates the integrity and a series of estimators of richness and species accumulation curves at a resolution of 15 geographical minutes, using the R-Wizard program.

The incidence of the production system and the area of the mosaic's vegetation cover in the richness and abundance of species were tested through a Kruskal-Wallis analysis for each variable. The Jaccard index was used to calculate the similarity in species composition of bird communities between production systems. In order to describe the relationship of diversity indices of mosaic bird communities between production systems and mosaic landscape metrics, a principal component analysis (PCA) was performed, in which each index value was used as a descriptive variable.

RESULTS

We registered 262 species of birds, 6720 individuals, distributed across 23 orders and 54 families within the 39 production system mosaics. In total, 97 species of birds were observed only once during sampling. The average species richness and average abundance recorded per mosaic was 39 ± 19 species and 172.3 ± 101.2 individuals respectively.

The richness of species observed throughout territorial units (geospatial location of the mosaics) in the study area is between 71 and 87 % of completeness, in accordance with the estimated richness values determined through Jackknife and Chao estimators (Fig. 1).

The inventory of the region represented more than 80 % of the potential average species to be detected in the study area. Therefore, the

integrity of the recorded species and the sampling effort allow us to understand the patterns and processes in the landscape mosaics of the production systems studied (Fig. 2).

Table 3 shows the estimated richness calculated for each production system. These estimators predicted a greater number of species than those observed. The system of traditional livestock production (SGT) was the system where the greatest difference between the values of observed and expected richness was presented. In total, the richness observed in all production systems represents between 64.3 and 90.3 % of the richness of the estimators. The SGT system presented the highest values of species richness ($S = 193$) and individuals ($N = 3\ 238$). However, the richness and average abundance of the mosaics between the systems did not present significant differences

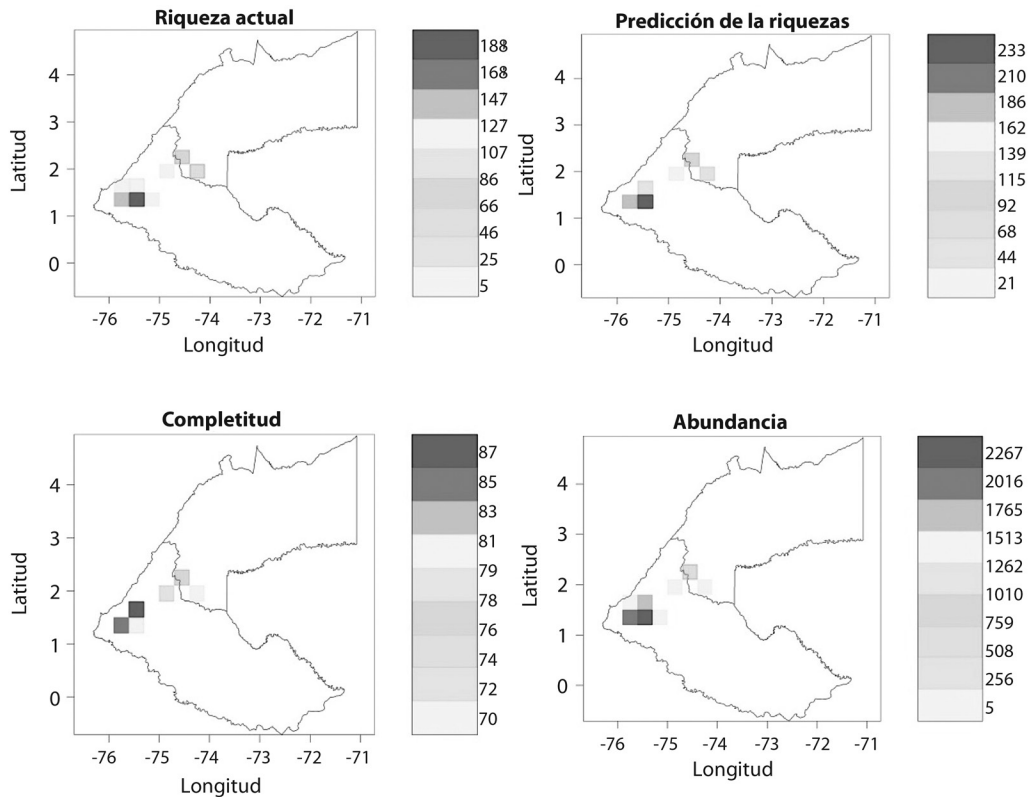


Fig. 1. Analysis of the geographical distribution of the richness of birds (Biogeographical Knowledge) of the production systems in the Andean Amazon region in the Department of Caquetá in 15-minute spatial resolution, corresponding to cells of 650 km².

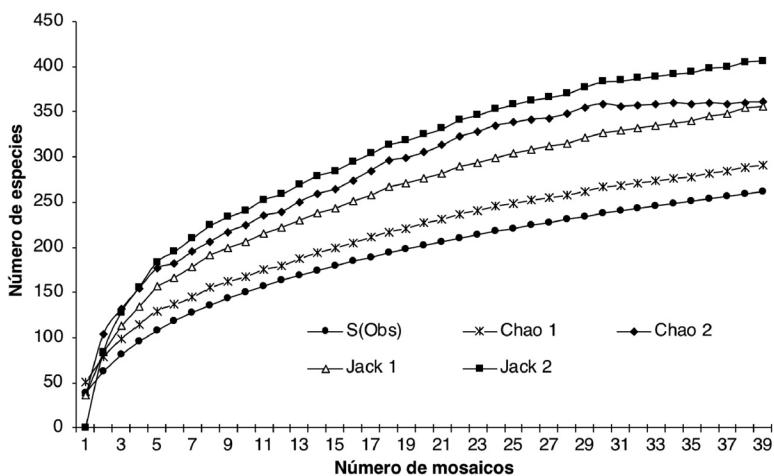


Fig. 2. Species accumulation curve of the mosaics of the study area in the landscapes of the production systems in the Andean Amazon region in the Department of Caquetá.

TABLE 3
Values of the richness and completeness of samples taken of birds in the mosaics of production systems of the Andean Amazon in the Department of Caquetá

System	Number of Mosaics	Species observed	Estimator				% Completeness
			Chao 1	Chao 2	Jackknife 1	Jackknife 2	
SGT	19	193	223	283	267	310	62-86
SAF	11	186	207	279	259	302	62-90
SSP	9	101	113	133	136	152	66-89
Total	39	262	292	364	357	407	64-90

(K-W = 3.38, g.l. = 2, $P > 0.05$) and (K-W = 2.73, g.l. = 2, $P > 0.05$) respectively.

Two species, *Bubulcus ibis* and *Ara severus*, represent 20 % of the total number of individuals registered in the 39 mosaics; 62.9 % of the species identified had abundances of less than ten individuals, and more than half of these only registered one or two individuals. Even though we did not find significant differences in the average abundances in the mosaics between production systems, the distribution of species abundance among production systems varied considerably between the SSP system and the SAF and SGT systems.

The latter two systems had a more homogeneous distribution of abundance among their species. In general, the curve of abundance distribution in production systems of the Andean

Amazon region presents few abundant species, some species with intermediate abundances and many rare species (Fig. 3). In this sense, these curves follow the geometric distribution model ($X^2 = 5.76$, $P < 0.05$).

The traditional livestock system registered 3244 individuals, distributed in 22 orders, 51 families, 141 genera and 193 species; this system was dominated by the species: *Bubulcus ibis* ($N = 592$), *Ara severus* ($N = 264$), *Thraupis palmarum* ($N = 140$), *Crotophaga ani* ($N = 126$) and *Tyrannus melancholicus* ($N = 124$). It should be noted that 42 species presented only one individual. The families Ardeidae ($N = 606$, $S = 6$), Thraupidae ($N = 424$, $S = 20$) and Tyrannidae ($N = 287$, $S = 28$) were the families with the largest number of individuals, while families such as Anatidae, Caprimulgidae,

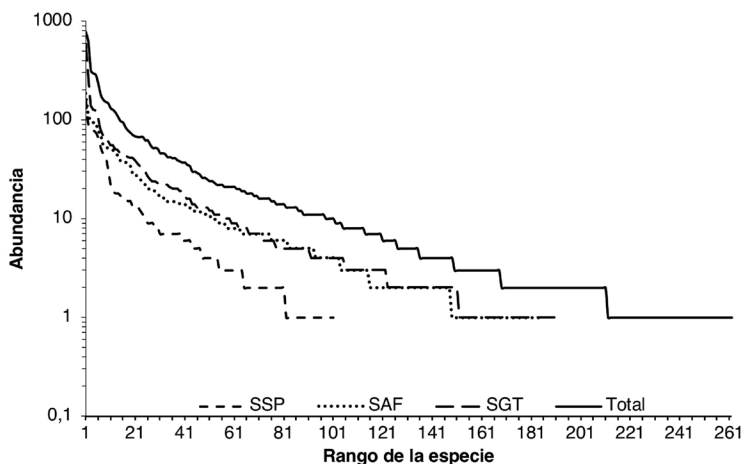


Fig. 3. Distribution curve of the abundance of mosaics sampled in production systems in the Andean Amazon region in the Department of Caquetá.

Podicipedidae and Tytonidae only registered one species with one individual.

In the agroforestry system, 270 individuals corresponding to 21 orders, 45 families, 122 genera and 186 species were observed; only four species showed abundances greater than 90 individuals, *A. severus* (N = 186), *T. melancholicus* (N = 117), *Thraupis episcopus* (N = 97), and *C. ani* (N = 93). The Psittacidae Families (N = 365, S = 10), Tyrannidae (N = 326, S = 31) and Thraupidae (N = 308, S = 18) presented the greatest levels of richness and abundance; while the rest of the families obtained abundances between one and 15 individuals.

Finally, for the silvopastoral system, 1206 individuals were found corresponding to 16 orders, 31 families, 80 genera and 101 species; only four species had the highest abundances, *A. severus* (N = 155), *T. episcopus* (N = 88), *B. ibis* (N = 86) and *Amazona amazonica* (N = 78); the remaining species showed very low abundances, among which 37 were represented by less than two individuals. The largest number of individuals were presented in the families: Psittacidae (N = 340, S = 10), Thraupidae (N = 199, S = 13) and Tyrannidae (N = 164, S = 18), unlike the Turdidae, Anatidae, Anhimidae, Alcedinidae and Therskiornithidae families, which each had three or fewer individuals.

There is evidence of exclusivity and rarity of species among the systems. In SGT systems, 54 species (N = 150) presented exclusive registries and 134 were considered rare because they presented abundances of less than ten individuals. For the SAF systems, we found 52 exclusive species and 133 rare species, and in SSP systems we found 13 exclusive species. The SGT and SAF systems have 54 % similarity in the composition of their species, and these two compared with SSP have only 42 % similarity.

In general terms, the indices of richness, diversity and equity presented the highest values in the SAF system mosaics, while the indices of abundance and dominance were highest for the mosaics associated with the SSP and SGT systems.

The analysis of principal components (ACP) of the diversity indices, the first component (CP1) explains 63.89 % of the variance, and 24.90 % in the second component (CP2). The first axis groups the mosaics that presented the highest values of species dominance indices at the positive end, represented by Simpson and Berger-Parker, associated with SSP and SGT. At the negative end are the mosaics with the greatest Shannon diversity index, equitability (1-D) and richness (Margalef), associated with

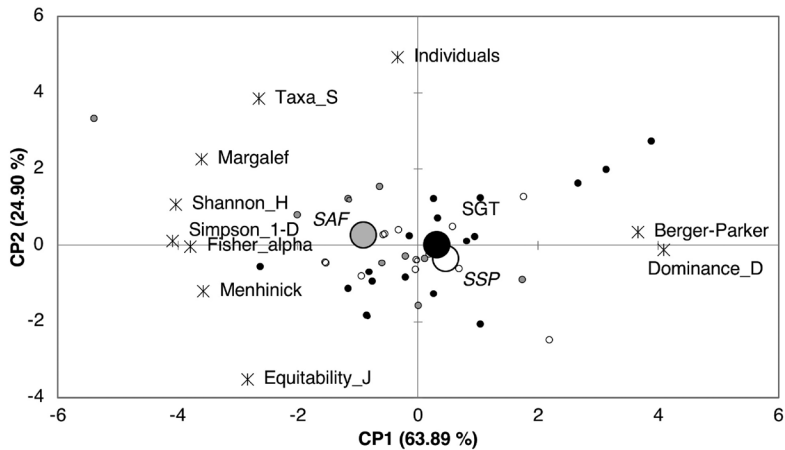


Fig. 4. Analysis of the main components of diversity indices in production systems in the Andean Amazon region in the Department of Caquetá.

SAF systems. Similarly, the second component was associated with the mosaics that presented the highest number of individuals and species in the positive end; these mosaics belong to SGT and SAF systems. In the negative end were those with higher equity values (Equitability-J), which belong to SSP systems. In general, the two components are related to indices of richness, diversity, dominance and equity (Fig. 4).

In the analysis of the main components of the diversity indices and the landscape metrics of the quadrants in the production systems, the first component contributes to the variance of 19.49 %. At its positive end, this component associates the indices of richness and diversity in landscapes with those within the bird community. At this extreme, biological diversity and landscape diversity present a positive association. The second component explains 17.90 % of the variance, and at its positive end it associates the variables of landscape metrics related to the shape and size of the patches with greater area, with the mosaics containing the highest species dominance values in the production system landscapes. At the negative end of this component, mosaics of greater richness and diversity of land patches are associated

with the indices of richness and diversity of the bird assemblage (Fig. 5).

In the analysis of canonical correlations, the first two components explain 45.98 % of the variability of the model. The first axis presents a positive correlation between the closed vegetation land uses and the dominance indices, and in the negative extreme, there is a correlation between open vegetation land uses and the indices of richness and diversity present in the mosaics. The second axis correlates the equity and richness indices with heterogeneous land uses in the positive end, and shows a decreasing complexity gradient for land uses with homogeneous coverage associated with dominance and abundance indices in the negative end (Fig. 6).

DISCUSSION

In this research, 262 species of birds were observed across all landscape elements of the 39 mosaics of the agroforestry, silvo-pastoral and traditional livestock production systems present in the Andean Amazon region of Southeastern Colombia in the Department of Caquetá. The spatial distribution of the richness and composition of the species across

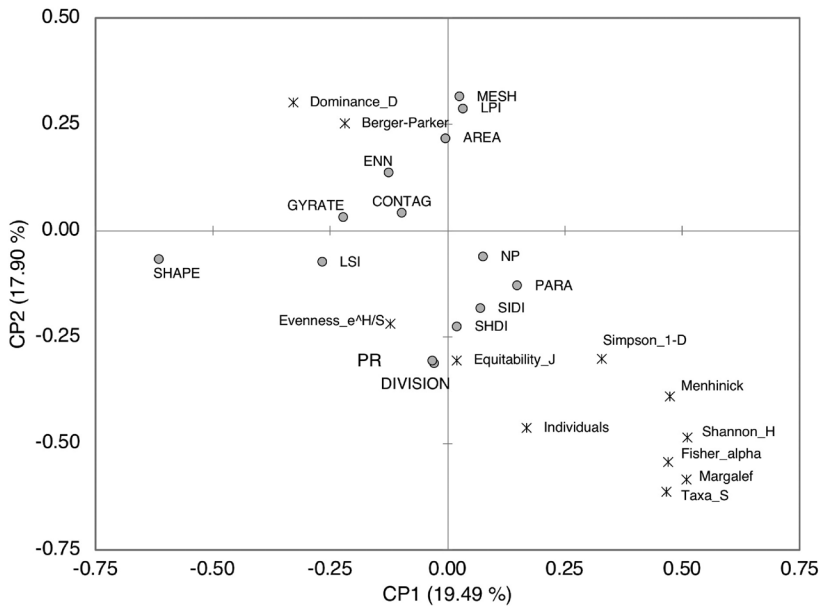


Fig. 5. Analysis of the main components of the diversity indices and mosaic landscape metrics in the Agroforestry, Traditional Livestock and Silvopastoral production systems in the region of the Andean Amazon in the department of Caquetá.

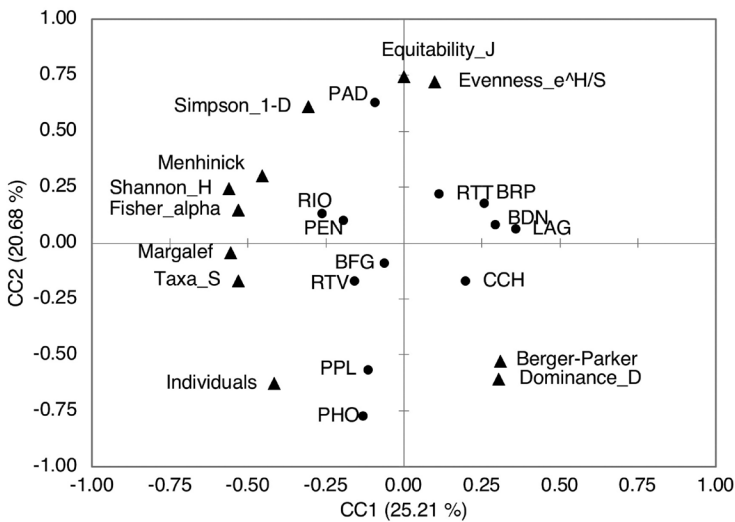


Fig. 6. Analysis of canonical correlations of diversity indices and areas (ha) of mosaic vegetation coverage in the production system landscapes of the Andean Amazon region in the Department of Caquetá.

the sampled mosaics allows us to gain better knowledge related to the species present in this region of the country. The species accumulation curves (effort of the collector), presented values close to the calculated estimates. In

this sense, the methods used and the punctual efforts put forth have been efficient and effective in documenting the registries of bird species (Rosenstock & Van Riper, 2001; Stiles & Rossetti, 1998; Velasquez-Valencia, 2009).

The fundamental structure of the abundance of bird communities in the production systems studied pertain to disturbed environments (May, 1981). The distribution curves of abundance in these systems are adjusted to communities that have been subjected to forces that modify their homeostasis, or to stages of early succession. The dominance of some species is the response to the disturbance of habitats (Cháux & Velásquez, 2009; Pearson, Gray, & Johannessen, 1983), which modify the types of coverage in the elements of the landscape (Velasquez-Valencia, 2009). In this sense, the distribution of the abundance of the communities present in the SAF, SSP and SGT production systems indicate a detriment to the habitat, characteristic of productive systems with dominant anthropogenic matrices.

In the mosaics studied, fragments, patches of forest and stubble are present. Inside these mosaics, birds vary in a predictable way as a function of the heterogeneity of the vegetation covers which define the characteristic of the production, composition and basic configuration of the typological formations of vegetation or landscape (Velásquez-Valencia et al., 2005; Lindenmayer et al., 2002). This is evident in the differences found in the diversity and composition of bird species observed in the mosaics, where there is a decrease in diversity values from closed, complex and heterogeneous vegetation land use associated with the systems of agroforestry production to the open and homogeneous vegetation land use associated with traditional livestock production.

Although no differences were found in the average distribution of richness and abundance in the production systems, the composition of the species between the systems does not present a high level of similarity. Likewise, Cruz-Trujillo (2014), did not find differences in the richness of birds captured between the patches of livestock and agroforestry systems of the Amazonian foothills, nor in the vegetation coverings found within these systems.

The diversity of the assemblage of birds showed a strong relation to the conditions of heterogeneity of the mosaic in the context of

the landscape. The presence of small remnants of habitats (riparian forests, dense forests, pastures with trees) assumes a complementarity or supplementary in the landscape, in the sense that birds access available resources in adjacent patches or areas in order to meet their requirements (Renjifo, 2001).

The richness of species was sensitive to changes in the composition and heterogeneity of the landscape. The variability and the distance between the types of habitat patches can affect the permeability of the landscape (Cerezo, Conde, & Poggio, 2011; Pearson, 1993; Saab, 1999; Sisk, Haddad, & Ehrlich, 1997; Trzcinski et al., 1999), which influences the dispersion and presence of bird species (McIntyre, 1995; Wiens, Stenseth, Horne, & Ims, 1993; Wilson et al., 2017). Mosaics with less contrast favored the dominance, abundance and distribution of some species, particularly those associated with open vegetation cover. In this sense, habitat patches are a limitation for the presence of species from open areas (Guadagnin & Maltchik, 2007; Herkert, 1994; Robbins, Dawson, & Dowell, 1989; Sampson, 1980).

The areas and the arrangement of vegetation cover types in the production system mosaics reflect the systematic management of these landscapes; this has repercussions on the implications for the practice of landscape conservation and restoration. The different types of vegetation cover serve as points of contact in the dispersion and distribution of the species in these areas.

Although the greatest value of richness, in terms of number of species, is found in the traditional livestock system, we must consider the ecological characteristics of the species that are concentrated here. Since the land uses associated with this system are made up of open vegetation in early stages of succession such as early stubble, clean pastures and pastures with abundant trees, a large range of food resources are generated, which are exploited by opportunistic species of birds that exploit more than one resource or specialists from grassland areas (Herkert, 1994; Johnson & Igl, 2001).

Nevertheless, the maximum value of species diversity (H) presented itself in agroforestry systems. These results suggest that it is possible to generalize the effect of improvement on the complexity of habitats in bird communities. It is probable that the response of the communities depends upon the characteristics of each system, such as management practices and land use, and related factors such as the size of the remaining patches of native vegetation and corridors of riparian vegetation (Velasquez-Valencia, 2009). Therefore, and considering that landscape mosaics in agroforestry production systems are mostly associated with closed vegetation (e.g., RTV, BFG), the presence and mobility of birds that frequent adjacent areas, such as *Dendrocolaptidos* and *Picidos*, are favored.

The management and protection that may be given to vegetation cover such as old stubble, BFG, or BRP should be the priority for conservation and the first starting point for the restoration and connectivity of landscapes in the Andean Amazon region of Colombia. Another approach is the design of a landscape for an entire community of species with respect to a certain quantity of habitat in the landscape and the isolation of patches (Westphal, Field, & Possingham, 2007). However, economic, environmental and social conditions undermine the perpetuity of these patches that give heterogeneity to the mosaics of these production landscapes. The presence of pastures with scattered trees is clearly an alternative management that largely guarantees the diversity and richness of bird species in these systems. However, the benefits will be greater upon obtaining a complete understanding of the functions and roles that landscape elements play in the conservation of bird diversity and in ecosystem services for the producer.

Mosaics with greater number and diversity of patch types of closed, symmetric vegetation coverage presented greater diversity and richness. Therefore, we prove the hypothesis of the dependence of the richness and abundance of bird species on the heterogeneity of the mosaic. These closed vegetation coverings

were associated with the mosaics of agroforestry systems. The dominance of species in the production system mosaics presented a positive relationship to the size of the patches. Mosaics with patches of open vegetation cover of greater size presented a greater dominance of species. These types of coverage were associated with the traditional livestock system.

The size of the mosaics studied allows us to estimate the response of richness, diversity and composition of bird communities to landscape conditions at this scale. Birds respond to the variation of the vegetation coverage of the production system mosaics in this extension. However, it is likely that at larger scales, some other patterns may be estimated in relation to the class and landscape variables selected in this investigation. This is consistent with what was stated by Smith, Fahrig, and Francis (2011) which establishes the ability to predict the most important landscape variables for all response variables in landscapes of 500 m in radius.

Ethical statement: authors declare that they all agree with this publication and made significant contributions; that there is no conflict of interest of any kind; and that we followed all pertinent ethical and legal procedures and requirements. A signed document has been filed in the journal archives.

ACKNOWLEDGMENTS

To Amadeo Perdomo Rojas for the support and company during fieldwork. To Fabio Castro for processing the images and preparing the coverage map. To the Centro de Investigación de la Biodiversidad Andino Amazónica INBIANAM of the Universidad de la Amazonia for facilitating the equipment and logistical funding of this research. To the Universidad de la Amazonia and the Universidad Nacional de Colombia for financing this work.

RESUMEN

Influencia de la configuración y heterogeneidad de los mosaicos agroforestales y silvopastoriles en la



avifauna de la Amazonia andina, de Colombia. La conversión generalizada de los usos de la tierra, han establecido patrones de modificación de la vegetación nativa a usos dominados por tierras agrícolas y de producción ganadera. La operación de estos sistemas de producción y las influencias sociales y económicas han creado diversos paisajes, mosaicos de elementos de cubierta vegetal variada (bosques, cultivos, pastizales, terrenos baldíos) dispuestos de manera diferente en el espacio. En esta investigación determinamos los patrones de distribución de la riqueza, la abundancia y la diversidad de la comunidad de aves en la configuración y composición de los paisajes agroforestal y silvopastoril. Se registraron 262 especies de aves, 6 720 individuos, 23 ordenes y 54 familias en los sistemas de producción. Ninguna de las curvas de acumulación de especies en los sistemas de producción llegó a su asíntota y los estimados calculados predijeron un mayor número de especies de las observadas durante el muestreo. La variabilidad encontrada tanto de riqueza, diversidad como de dominancia y equidad en los ensamblajes de aves, entre los diferentes sistemas es explicada tanto por composición como por estructura. Las variables que describen la cobertura en los mosaicos, tienen un efecto diferente e independiente en la diversidad del ensamble de aves y de la asociación de los grupos de usos de la tierra en los mosaicos. Se presentaron correlaciones positivas entre los usos del suelo de vegetación abierta y los índices de dominancia, y los usos de suelo de vegetación cerrada con los índices de riqueza y diversidad presente en los mosaicos. Las aves responden a la variación de las coberturas de los elementos de los mosaicos en los sistemas de producción en esta extensión, sin embargo, es probable que a escalas más grandes se puedan estimar algunos otros patrones con relación a las variables de clase y paisaje seleccionados en esta investigación. Se pueden predecir cuales son los variables del paisaje más importante para todas las variables de respuesta en los paisajes de 500 m de radio.

Palabras clave: aves; paisaje; heterogeneidad; diversidad; riqueza; agroforestería; silvopastoril.

REFERENCES

- Alejandra, I. R., & Simonetti, A. (2001). Plant-Mammal Interactions in Tropical Bolivian Forests with Different Hunting Pressures. *Conservation Biology*, 15(3), 617-623.
- Antongiovanni, M., & Metzger, J. P. (2005). Influence of matrix habitats on the occurrence of insectivorous bird species in Amazonian forest fragments. *Biological Conservation*, 122(3), 441-451.
- Armenteras, D., Gast, F., & Villareal, H. (2003). Andean forest fragmentation and the representativeness of protected natural areas in the eastern Andes, Colombia. *Biological Conservation*, 113(2), 245-256.
- Bennett, A. F., Radford, J. Q., & Haslem, A. (2006). Properties of land mosaics: Implications for nature conservation in agricultural environments. *Biological Conservation*, 133(2), 250-264.
- Cerezo, A., Conde, M. C., & Poggio, S. L. (2011). Pasture area and landscape heterogeneity are key determinants of bird diversity in intensively managed farmland. *Biodiversity and Conservation*, 20(12), 2649-2667.
- Chauvel, A., Grimaldi, M., & Tessier, D. (1991). Changes in soil pore-space distribution following deforestation and revegetation: An example from the Central Amazon Basin, Brazil. *Forest Ecology and Management*, 38(3-4), 259-271.
- Cháuz, J. T. D., & Velásquez, A. (2009). Uso de las coberturas vegetales y movilidad de aves semilleras en un paisaje urbano de Florencia (Caquetá, Colombia). *Momentos de Ciencia*, 6(1), 70-79.
- Colwell, R. K., & Coddington, J. A. (1994). Estimating Terrestrial Biodiversity through Extrapolation. *Philosophical Transactions of the Royal Society B: Biological Sciences*, 345(1311), 101-118.
- Cruz-Trujillo, E. J. (2014). *Efecto de la calidad del parche-paisajes de producción en la comunidad de aves en el piedemonte caqueteño* (Doctoral dissertation). Universidad Nacional de Colombia, Colombia.
- Donald, P. F., Green, R. E., & Heath, M. F. (2001). Agricultural intensification and the collapse of Europe's farmland bird populations. *Proceedings of the Royal Society B: Biological Sciences*, 268(1462), 25-29.
- Etter, A. (1998). Mapa general de ecosistemas de Colombia (1:1.500.000). In M. E. Chaves & N. Arango (Eds.), *Informe nacional sobre el estado de la biodiversidad 1997* (Vol. 3). Colombia: Instituto de Investigación de Recursos Biológicos Alexander von Humboldt, PNUMA and Ministerio de Medio Ambiente.
- Fahrig, L. (2003). Effects of Habitat Fragmentation on Biodiversity. *Annual Review of Ecology, Evolution, and Systematics*, 34(1), 487-515.
- Foley, J. A., DeFries, R., Asner, G. P., Barford, C., Bonan, G., Carpenter, S. R., ... Snyder, P. K. (2005). Global consequences of land use. *Science*, 309(5734), 570-574.
- Gotelli, N. J., & Colwell, R. K. (2001). Quantifying Biodiversity: Procedures and Pitfalls in the Measurement and Comparison of Species Richness. *Ecology Letters*, 4(4), 379-391.
- Guadagnin, D. L., & Maltchik, L. (2007). Habitat and landscape factors associated with neotropical waterbird occurrence and richness in wetland fragments. *Biodiversity and Conservation*, 16(4), 1231-1244.

- Haila, Y. (2002). A conceptual genealogy of fragmentation research: From island biogeography to landscape ecology. *Ecological Applications*, 12(2), 321-334.
- Halfpiter, G. & Moreno, C. E. (2005). Significado biológico de las diversidades alfa, beta y gamma. In G. Halfpiter, J. Soberón, P. Koleff & A. Meliá (Eds.), *Sobre diversidad biológica: el significado de las diversidades alfa, beta y gamma* (pp. 5-18). Zaragoza, España: Monografías tercer milenio, Sociedad Entomológica Aragonesa.
- Haslem, A., & Bennett, A. F. (2008). Birds in agricultural mosaics: the influence of landscape pattern and countryside heterogeneity. *Ecological Applications*, 18(1), 185-196.
- Heikkinen, R. K., Luoto, M., Virkkala, R., & Rainio, K. (2004). Effects of habitat cover, landscape structure and spatial variables on the abundance of birds in an agricultural-forest mosaic. *Journal of Applied Ecology*, 41(5), 824-835.
- Herkert, J. R. (1994). The Effects of Habitat Fragmentation on Midwestern Grassland Bird Communities. *Ecological Applications*, 4(3), 461-471.
- Hernández-Camacho, J. (1992). Caracterización Geográfica de Colombia. In G. Halfpiter (Ed.), *La Diversidad Biológica de Iberoamérica I* (pp. 45-54). México: Acta Zoologica Mexicana (n.s.).
- Houghton, R. A. (2013). The Extent Worldwide Land-use Change in the last few centuries and particularly in the last several decades, effects of land-use change have become global. *BioScience*, 44(5), 305-313.
- IDEAM. (2017). Núcleos activos por deforestación 2017-1. Recuperado de <http://documentacion.ideam.gov.co/openbiblio/bvirtual/023708/boletinDEF.pdf>
- Jeliazkov, A., Mimet, A., Chargé, R., Jiguet, F., Devictor, V., & Chiron, F. (2016). Impacts of agricultural intensification on bird communities: New insights from a multi-level and multi-facet approach of biodiversity. *Agriculture, Ecosystems and Environment*, 216, 9-22.
- Johnson, D. H., & Igl, L. D. (2001). Area Requirements of Grassland Birds: a Regional Perspective. *The Auk*, 118(1), 24.
- Jokimäki, J., & Huhta, E. (1996). Effects of landscape matrix and habitat structure on a bird community in northern Finland: a multi-scale approach. *Ornis Fennica*, 73, 97-113.
- Kaboli, M., Guillaumet, A., Prodon, R., Donald, P. F., Green, R. E., & Heath, M. F. (2001). Agricultural intensification and the collapse of Europe's farmland bird populations. *Journal of Biogeography*, 268(1), 25-29.
- Laurance, W. F. (1994). Rainforest fragmentation and the structure of small mammal communities in tropical Queensland. *Biological Conservation*, 69(1), 23-32.
- Laurance, W. F., & Gascon, C. (1997). How to Creatively Fragment a Landscape. *Conservation Biology*, 11(2), 577-579.
- Laurance, W. F., Lovejoy, T. E., Vasconcelos, H. L., Bruna, E. M., Didham, R. K., Stouffer, P. C., ... Sampaio, E. (2002). Ecosystem Decay of Amazonian Forest Fragments: a 22-Year Investigation. *Conservation Biology*, 16(3), 605-618.
- Laurance, W. F., & Vasconcelos, H. L. (2009). Consequências ecológicas da fragmentação florestal na Amazônia. *Oecologia Brasiliensis*, 13(3), 434-451.
- Laurance, W. F., & Yensen, E. (1991). Predicting the impacts of edge effects in fragmented habitats. *Biological Conservation*, 55(1), 77-92.
- Lindenmayer, D. B., & Fischer, J. (2007). Tackling the habitat fragmentation pantheon. *Trends in Ecology and Evolution*, 22(3), 127-132.
- Lindenmayer, D. B., Manning, A. D., Smith, P. L., Possingham, H. P., Fischer, J., Oliver, I., & McCarthy, M. A. (2002). The focal-species approach and landscape restoration: A critique. *Conservation Biology*, 16(2), 338-345.
- May, R. M. (1981). Patterns in multi-species communities. In R. M. May (Ed.), *Theoretical Ecology: principles and application* (2nd Ed.) (pp. 197-227). Oxford: Blackwell Scientific Publications.
- McGarigal, K., & Cushman, S. A. (2002). Comparative Evaluation of Experimental Approaches to the Study of Habitat Fragmentation Effect. *Ecological Applications*, 12(2), 335-345.
- McIntyre, N. E. (1995). Effects of forest patch size on avian diversity. *Landscape Ecology*, 10(2), 85-99.
- Murcia, C. (1995). Edge effects in fragmented forests: implications for conservation. *Trends in Ecology & Evolution*, 10(2), 58-62.
- Olson, D. M., Dinerstein, E., Powell, G. V. N., & Wikramanayake, E. D. (2002). Conservation biology for the biodiversity. *Conservation Biology*, 16, 1-3.
- Pearson, S. M. (1993). The spatial extent and relative influence of landscape-level factors on wintering bird populations. *Landscape Ecology*, 8(1), 3-18.
- Pearson, T., Gray, J., & Johannessen, P. (1983). Objective selection of sensitive species indicative of pollution-induced change in benthic communities. *Marine Ecology Progress Series*, 12, 237-255.
- Peterjohn, B., & Sauer, J. R. (1999). Population status of North American grassland birds from the North

- American Breeding Bird Survey. In P. D. Vickery & J. R. Herkert (Eds.), *Ecology and conservation of grassland birds of the western hemisphere* (pp. 27-44). Lawrence, Kansas: The Cooper Ornithological Society Press.
- Redford, K. (1992). The empty forest. *BioScience*, 42(6), 412-422.
- Renjifo, L. M. (2001). Effect of natural and anthropogenic landscape matrices on the abundance of subandean bird species. *Ecological Applications*, 11(1), 14-31.
- Robbins, C. S., Dawson, D. K., & Dowell, B. A. (1989). Habitat area requirements of breeding forest birds of the middle Atlantic states. *Wildlife Monographs*, 103, 32.
- Roldán, A. I., & Simonetti, A. (2001). Plant-Mammal Interactions in Tropical Bolivian Forests with Different Hunting Pressures. *Conservation Biology*, 15(3), 617-623.
- Rosenstock, S. S., & Van Riper III, C. (2001). Breeding bird responses to juniper woodland expansion. *Journal of Range Management*, 54(May), 226-232.
- Saab, V. (1999). Importance of spatial scale to habitat use by breeding birds in riparian forests: a hierarchical analysis. *Ecological Applications*, 9(1), 135-151.
- Sampson, F. B. (1980). Island Biogeography and the Conservation of Prairie Birds. In *Proceedings of the Seventh North American Prairie Conference*, 7, 293-299.
- Schmiegelow, F. K. A., Machtans, C. S., & Hannon, S. J. (1997). Are boreal birds resilient to forest fragmentation? An experimental study of short-term community responses. *Ecology*, 78(6), 1914-1932.
- Sisk, T. D., Haddad, N. M., & Ehrlich, P. R. (1997). Bird assemblages in patchy woodlands: modeling the effects of edge and matrix habitats. ecological application. *Ecological Applications*, 7(4), 1170-1180.
- Smith, A. C., Fahrig, L., & Francis, C. M. (2011). Landscape size affects the relative importance of habitat amount, habitat fragmentation, and matrix quality on forest birds. *Ecography*, 34(1), 103-113.
- Stiles, F. G., & Rosseli, L. (1998). Inventario de las aves de un bosque alto andino Comparacion de dos metodos. *Caldasia*, 20(1), 29-43.
- Trzcinski, M. K., Fahrig, L., & Merriam, G. (1999). Independent Effects of Forest Cover and Fragmentation on the Distribution of Forest Breeding Birds. *Ecological Applications*, 9(2), 586-593.
- Velásquez-Valencia, A., Ricaurte, L. F., Lara, F., Cruz, E. J., Tenorio, G. A., & Correa, M. (2005). Lista anotada de las aves de los humedales de la parte alta del Departamento de Caqueta. *Memorias: Manejo de Fauna Silvestre en Amazonia y Latinoamerica*, 320-329.
- Velásquez-Valencia, A. (2009). *Estructura de la comunidad de aves en sistemas de producción del Piedemonte Amazónico/Community structure of birds in production systems in the Amazonian Foothills* (Doctoral dissertation). Universidad Nacional de Colombia sede Amazonia, Colombia.
- Westphal, M. I., Field, S. A., & Possingham, H. P. (2007). Optimizing landscape configuration: A case study of woodland birds in the Mount Lofty Ranges, South Australia. *Landscape and Urban Planning*, 81(1-2), 56-66.
- Wiens, J. A., Stenseth, N. C., Horne, B. Van, & Ims, R. A. (1993). Ecological mechanisms and landscape ecology. *Oikos*, 66(3), 369.
- Wilson, S., Mitchell, G. W., Pasher, J., McGovern, M., Hudson, M. A. R., & Fahrig, L. (2017). Influence of crop type, heterogeneity and woody structure on avian biodiversity in agricultural landscapes. *Ecological Indicators*, 83(June), 218-226.