

APPENDIX 1

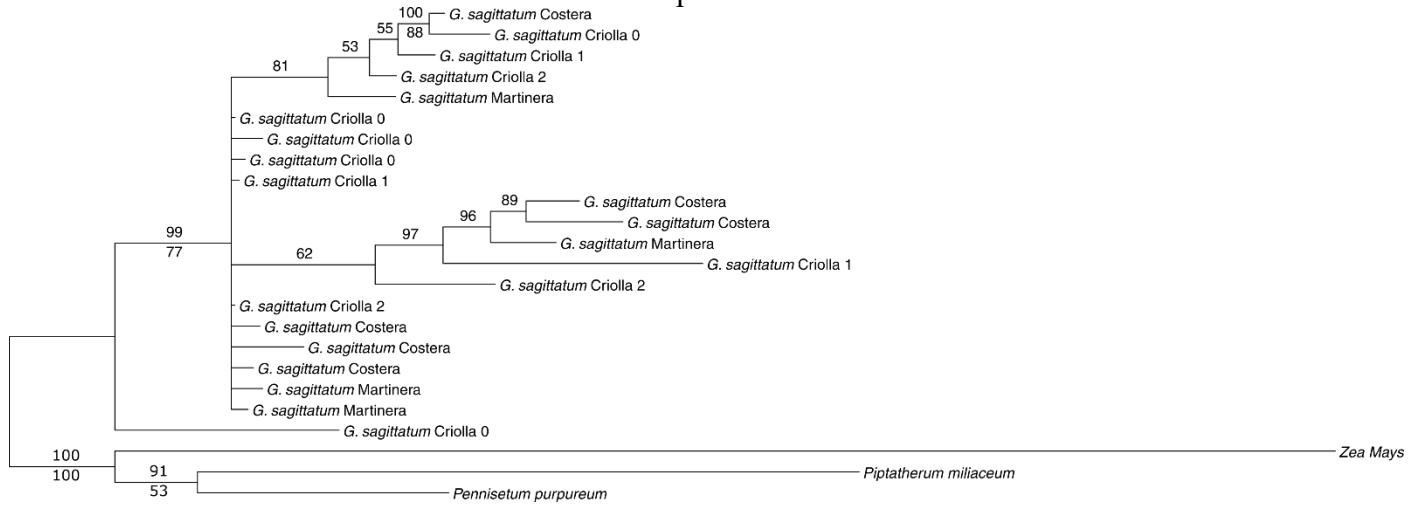
Accession numbers of the barcode sequences submitted from GenBank of NCBI

Submission number	Specimen	Accession number	Gene
BankIt1986301	criollatwo_3	KY549399	<i>matK</i>
BankIt1986301	criollazero_6	KY549400	<i>matK</i>
BankIt1986301	criollazero_7	KY549401	<i>matK</i>
BankIt1986301	martinera_2	KY549402	<i>matK</i>
BankIt1987122	costera_5	KY549403	<i>matK</i>
BankIt1987122	criollazero_4	KY549404	<i>matK</i>
BankIt1987122	criollaone_5	KY549405	<i>matK</i>
BankIt1987122	martinera_1	KY549406	<i>matK</i>
BankIt1987122	criollaone_2	KY549407	<i>matK</i>
BankIt1987124	criollazero_2	KY549408	<i>matK</i>
BankIt1987128	costera_6	KY549409	<i>matK</i>
BankIt1987128	criollatwo_2	KY549410	<i>matK</i>
BankIt1987128	costera_7	KY549411	<i>matK</i>
BankIt1987128	costera_1	KY549412	<i>matK</i>
BankIt1987128	criollaone_6	KY549413	<i>matK</i>
BankIt1987128	costanera_4	KY549414	<i>matK</i>
BankIt1987128	martinera_7	KY549415	<i>matK</i>
BankIt1987128	costera_3	KY549416	<i>matK</i>
BankIt1987128	criollazero_5	KY549417	<i>matK</i>
BankIt1987240	costera_3	KY549418	<i>rbcl</i>
BankIt1987250	martinera_2	KY549419	<i>rbcl</i>
BankIt1987250	costera_7	KY549420	<i>rbcl</i>
BankIt1987250	criollaone_4	KY549421	<i>rbcl</i>
BankIt1987250	costera_6	KY549422	<i>rbcl</i>
BankIt1987250	martinera_4	KY549423	<i>rbcl</i>
BankIt1987250	criollatwo_1	KY549424	<i>rbcl</i>
BankIt1987250	criollazero_2	KY549425	<i>rbcl</i>
BankIt1987251	criollatwo3	KY549426	<i>rbcl</i>
BankIt1987251	criollaone6	KY549427	<i>rbcl</i>
BankIt1987251	criollatwo4	KY549428	<i>rbcl</i>
BankIt1987251	costera1	KY549429	<i>rbcl</i>
BankIt1987251	martinera5	KY549430	<i>rbcl</i>
BankIt1987251	martinera6	KY549431	<i>rbcl</i>
BankIt1987251	criollaone5	KY549432	<i>rbcl</i>
BankIt1987251	criollatwo2	KY549433	<i>rbcl</i>
BankIt1987251	criollatwo6	KY549434	<i>rbcl</i>
BankIt1987251	martinera1	KY549435	<i>rbcl</i>
BankIt1987251	martinera7	KY549436	<i>rbcl</i>
BankIt1987251	costera2	KY549437	<i>rbcl</i>
BankIt1987251	criollaone2	KY549438	<i>rbcl</i>
BankIt1987251	criollazero6	KY549439	<i>rbcl</i>

BankIt1987251	criollaone7	KY549440	<i>rbcl</i>
BankIt1987251	criollazero5	KY549441	<i>rbcl</i>
SUB2359393	criollaone_2	KY522854	ITS1_2
SUB2359393	criollaone_4	KY522855	ITS1_2
SUB2359393	criollazero_5	KY522856	ITS1_2
SUB2359393	criollazero_4	KY522857	ITS1_2
SUB2359393	criollatwo_2	KY522858	ITS1_2
SUB2359393	martinera_2	KY522859	ITS1_2
SUB2359393	criollaone_7	KY522860	ITS1_2
SUB2359393	criollazero_7	KY522861	ITS1_2
SUB2359393	criollatwo_3	KY522862	ITS1_2
SUB2359393	costera_3	KY522863	ITS1_2
SUB2359393	costera_6	KY522864	ITS1_2
SUB2359393	martinera_4	KY522865	ITS1_2
SUB2359393	martinera_5	KY522866	ITS1_2
SUB2359393	martinera_7	KY522867	ITS1_2
SUB2359393	criollazero_6	KY522868	ITS1_2
SUB2359393	criollaone_5	KY522869	ITS1_2
SUB2359393	criollaone_6	KY522870	ITS1_2
SUB2359393	costera_2	KY522871	ITS1_2
SUB2359393	costera_7	KY522872	ITS1_2
SUB2359393	criollatwo_6	KY522873	ITS1_2
SUB2359393	martinera_6	KY522874	ITS1_2

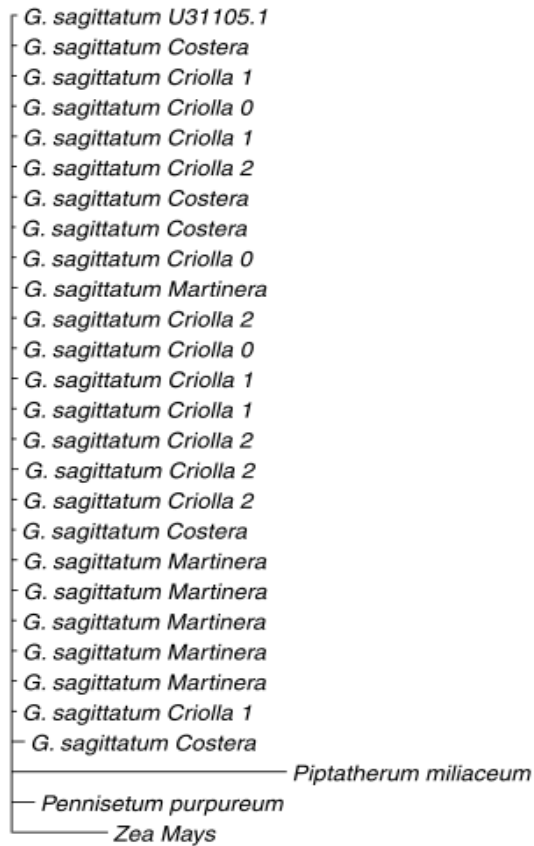
APPENDIX 2

Total evidence phylogram from Bayesian Inference approach for *Gynerium sagittatum*. Values above branch labels correspond to posterior probability values, and below, maximum likelihood bootstrap



APPENDIX 3

The *rbcL* gene phylogram from Bayesian Inference approach for *Gynerium sagittatum*



APPENDIX 4

The *matK* gene phylogram from Bayesian Inference approach for *Gynerium sagittatum*. Values above branch labels correspond to posterior probability values, and below, maximum likelihood bootstrap

