

González, L.P., Vargas-León, C.M., Fuentes-Rodríguez, G.A., Calderón-Espinosa, M.L., & Matta, N.E. (2021). Do blood parasites increase immature erythrocytes and mitosis in amphibians? *Revista de Biología Tropical*, 69(2), 615-625. <https://doi.org/10.15517/rbt.v69i2.45459>

<https://doi.org/10.15517/rbt.v69i2.45459>

Do blood parasites increase immature erythrocytes and mitosis in amphibians?

Leydy P. González¹⁺
Carolina M. Vargas-León²⁺
Gustavo Andrés Fuentes-Rodríguez¹
Martha L. Calderón-Espinosa³
Nubia E. Matta*¹

1. Departamento de Biología, Facultad de Ciencias, Universidad Nacional de Colombia, Grupo caracterización genética e inmunología Sede Bogotá, Carrera 30 No 45-03, Bogotá, Colombia; lpgonzalezca@unal.edu.co, gafuentesr@unal.edu.co, nemattac@unal.edu.co (Correspondence*)
2. Departamento de Microbiología. Facultad de Medicina, Universidad Nacional de Colombia, Sede Bogotá, Carrera 30 No 45-03, Bogotá, Colombia; cmvargasl@unal.edu.co
3. Instituto de Ciencias Naturales, Facultad de Ciencias, Universidad Nacional de Colombia, Sede Bogotá, Carrera 30 No 45-03, Bogotá, Colombia; mlcalderone@unal.edu.co

+ These authors contributed equally.

Received 18-I-2021. Corrected 22-IV-2021. Accepted 28-IV-2021.

Abstract. Introduction: In amphibians, blood may act as a hematopoietic tissue. However, the knowledge concerning hematological features is scarce, there is not much information that allows an analysis about the possible explanations of this physiological feature. **Objective:** This study aimed to evaluate the relationship between immature red blood cells (RBCs) mitosis and the presence of blood parasites in amphibians. **Methods:** We sampled 116 amphibians (31 species) in six Colombian localities. Blood was taken by cardiac puncture or maxillary vein puncture. Smears were prepared, fixed, and Giemsa stained for microscopical analysis. The variables analyzed were the percentage of immature RBCs, mitotic cells in peripheral blood, and blood parasite infection. Data were analyzed using Wilcoxon's rank test and exact Fisher statistical tests. **Results:** Sixty-two individuals showed mitosis in peripheral blood, and these mitotic RBCs shared morphological features with immature RBCs. Overall, parasite prevalence was 30.1 %, distributed as follows: *Trypanosoma* (24.1 %), *Hepatozoon*-like (6 %), *Dactylosoma* (4.3 %), *Karyolysus*-like (0.9 %), and Filarioidea (2.6 %). A positive association between the percentage of immature RBCs and the presence of mitotic RBCs was found, and also between the blood parasite infection and the percentage of immature RBCs. **Conclusions:** In this study, we found that the presence of blood parasites, immature RBCs, and RBCs mitosis are frequent events in amphibians' peripheral blood, and our analysis suggests an association between those features. Thus, the release of immature RBCs and the mitosis of those cells in peripheral blood may be a physiological response to blood parasite infection. Further studies characterizing hematology in amphibians and wildlife, in general, are desirable.

Key words: anemia; Colombia; erythropoiesis; hemoparasites; RBC; peripheral blood.



Amphibia is composed of three orders: Caudata (salamanders and newts), Gymnophiona (caecilians), and Anura (frogs and toads); each has different organs associated with the hematopoietic process. In Gymnophiona (like *Ichthyophis kohtaoensis*), erythropoiesis and thrombopoiesis are restricted to the spleen, and granulocytopoiesis occurs in the liver (Zapata, Gomariz, Garrido, & Cooper, 1982). For salamanders, information about the source of the red blood cells is poor; bone marrow, at least during their adult life, and organs like the liver may act as secondary hematopoietic organs (Arikan & Çiçek, 2014). In frogs and toads, there is no consensus about the hematopoietic organs. Nonetheless, the liver, spleen, kidney, thymus, and bone marrow are suggested as the main hematopoietic organs (Jordan & Speidel 1930; Glomski, Tamburlin, Hard, & Chainani, 1997; Cumano & Godin, 2007; Akulenko, 2012). During the tadpole stage, the kidney is the organ involved in the hematopoiesis process (Jordan & Speidel, 1930; Arikan & Cicek, 2014). This characteristic may be species-dependent and could be associated with metamorphosis and the environmental shift during their life-time. In *Xenopus laevis*, the aquatic toad, vascularization in bone marrow is rudimentary. In this species, erythropoiesis occurs in the liver (Nogawa-Kosaka et al., 2011; Okui et al., 2013), and myelopoiesis is restricted to the bone marrow (Yaparla, Reeves, & Grayfer, 2020). In terrestrial amphibians, as *Lithobates catesbeianus*, the bone marrow vascularization is more complex, similar to mammalian vascularization (Tanaka, 1976). In this species, erythropoiesis does not occur in the liver or spleen (Cumano & Godin, 2007) but in bone marrow, and the kidney (de Abreu Manso, de Brito-Gitirana, & Pelajo-Machado, 2009).

Amphibian red blood cells (RBCs) are nucleated, as in fish, reptiles, and birds. Amphibian RBCs' lifespans range from 200 to 1 400 days (Altland & Brace, 1962); their RBCs (mainly in salamanders) are the largest among vertebrates, e.g., *Amphiuma tridactylum* RBCs sizes are approximately 70 μm length and 40 μm width. In contrast, frogs and toads,

have the smallest RBCs of amphibians, 22 μm length and 15 μm width on average (Mitsuru, 1981; Claver & Quaglia, 2009; Arikan & Cicek, 2014).

Red blood cell maturation in peripheral blood has been reported in other vertebrates such as Cyclostomi, Chondrichthyes, Teleosts (Glomski et al., 1997), as well as in amphibians like *Pelophylax saharicus*, *Bufo bufo*, *Epidalea calamita*, *Bufo viridis*, and *Xenopus laevis* (Plum, 1953; Thomas & Maclean, 1974; Bouhafs, Berrebbah, Devaux, Rouabhi, & Djebar, 2009). This could be accompanied by mitosis of immature RBCs (Dawson, 1930), but it is an unusual phenomenon that has been barely reported in some amphibians, reptiles, and occasionally in birds. Seasonal changes and heavy metal contamination can induce RBC maturation in peripheral blood and immature RBCs' mitosis (Bouhafs et al., 2009; Akulenko, 2012; González-Mille et al., 2019). Other factors that may be related to the increase of immature RBCs in peripheral blood are the reduction of oxygen levels due to anemia, hemolysis, or hypoxia; these conditions promote a regenerative physiological response that increases the RBCs count (Martinho, 2012; Maceda-Veiga et al., 2015; Dissanayake et al., 2017). Thomas and Maclean (1974) and Nogawa-Kosaka et al. (2011) showed that, after anemia induction, *Xenopus laevis* increases the immature RBCs in peripheral blood by raising the erythropoietin levels, and in newts (Family: Salamandridae), spleen ablation could be a triggering factor for this too (Dawson, 1933).

Amphibians are commonly infected by intracellular blood parasites like *Dactylosoma*, *Hepatozoon*, *Hemolivia*, or *Karyolysus* (Petit, Landau, Baccam, & Lainson, 1990; Barta, 1991; Haklová-Kočíková et al., 2014; Netherlands, Cook, & Smit, 2014) and extracellular blood parasites such as Filarioidea and *Trypanosoma* (Desser, 2001; Žičkus 2002; Ferreira et al., 2015; Nguete, Wondji, Pone, & Mpoame, 2019). Parasitic infection by *Plasmodium* and *Hepatozoon*, among others, may induce anemia in reptiles, birds, and amphibians (Schall, 2002; Vardo-Zalik & Schall, 2008; Saggese,

2009; Motz, Lewis, & Vardo-Zalik, 2014; Forzán, Heatley, Russell, & Horney, 2017; Stijlemans, De Baetselier, Magez, Van Ginderachter, & De Trez, 2018).

In this study, we describe the presence of mitosis in the peripheral blood of amphibians from different Colombian localities and evaluate the possible association of this process with the increase of immature RBCs in peripheral blood and the presence of blood parasites. We hypothesize that infection by blood parasites may influence the presence of mitosis in peripheral blood since some blood parasites could induce anemia in their hosts, triggering an increase of immature RBCs in the peripheral blood where they mature and carry out mitosis. This is the first study about the potential influence of blood parasites on hematopoiesis in peripheral blood in several wild species of anurans occurring in Andean, pacific and Amazonian regions in Colombia. Besides, it is the study, around this topic, with the largest number of species sampled in the world. Not leaving aside, that this topic has not been treated for several years.

MATERIALS AND METHODS

Sampling: A total of 116 amphibians (31 species) blood smears were analyzed (Table 1). Blood was withdrawn by maxillary vein puncture or by cardiac puncture just after euthanasia (American Veterinary Medical Association, 2020), carried out for taxonomic purposes. Blood smears (two or three replicas per individual) were fixed with methanol for five minutes and stained with 4 % Giemsa (pH 7.2) for 45 minutes (Valkiūnas, 2005). Six localities in Colombia were sampled: San José del Guaviare-Guaviare (N = 6 individuals sampled), Tumaco-Nariño (N = 8), Santa María-Boyacá (N = 8), Medina-Cundinamarca (N = 51), San Gil-Santander (N = 15) and the campus of the Universidad Nacional de Colombia-Bogotá (N = 28), all sampled individuals are specified in the Digital Appendix. Smears were deposited into the biological collection GERPH of the Universidad Nacional de Colombia. All

animal procedures were conducted with the Bioethics Committee's approval, Fundación Universitaria Internacional del Trópico Americano-Unitrónico (Act May 18, 2020), and the Science Faculty's Ethics Committee, Universidad Nacional de Colombia (Act 06, 2019). This investigation was developed following the Colombian Congress' 84 th law of 1989, which is the current national statute for animal protection, and the resolution 8 430 of 1993 from the Ministry of Health, which regulates the biomedical investigation with animals.

Blood smear examination: smears were examined and photographed using an Olympus CX41 microscope (Olympus Corporation, Tokyo, Japan), equipped with an integrated camera and a Leica DM750e microscope (Leica Microsystems, Heerbrugg, Switzerland), equipped with a Leica EC3 digital camera. The parasites identified were classified as extra- and intracellular and identified to the genus level. There is no established protocol for the estimation of immature RBCs in amphibians. We obtained the percentage of immature RBCs by counting 50 ideal fields at x400 magnification; each field had an average of 100 RBCs for approximately 5 000 RBCs; it represents a modification of the method described by Collicutt, Grindem, and Neel (2012). For parasite detection the whole blood smear and all replicas were screened, then the parasitemia was estimated as the number of parasites on 10 000 RBCs, for intracellular parasites, and for extracellular parasites as the number of parasites on 100 fields (Valkiūnas, 2005; Benedikt, Barus, Capek, Havlicek, & Literak, 2009).

Statistical analysis: Statistical analysis was carried out using the R commander (Fox & Bouchet-Valat, 2019) package for R software (R Core Team, 2020). Variables evaluated were: the presence or absence of mitosis in peripheral blood, the percentage of immature RBCs, the presence or absence of blood parasites, and the type of parasite. A Kolmogorov-Smirnov test was used to evaluate the normal distribution of the data. A common feature of the data was a



TABLE 1
Amphibian species included in this study, common name, sampling location,
and N (number of individuals sampled per species) are depicted

Family	Species	English name	N	
Microhylidae	<i>Elachistocleis ovalis</i> (Schneider, 1799) ¹	Narrow-mouthed frog	1	
Ranidae	<i>Lithobates palmipes</i> (Spix, 1824) ³	Amazon Waterfrog	1	
Brachycephaloidea	<i>Pristimantis cf. savagei</i> (Pyburn & Lynch, 1981) ²	Pyburn's Robber Frog	1	
	<i>Pristimantis vilarsi</i> (Melin, 1941) ¹	Rio Uaupes Robber Frog	1	
	<i>Pristimantis</i> sp. ³		1	
	<i>Rhaebo glaberrimus</i> (Günther, 1868) ³	Cundinamarca Toad	2	
	<i>Rhinella gr. margaritifera</i> (Laurenti, 1768) ^{2, 3}		2	
	<i>Rhinella beebei</i> (Gallardo, 1965) ³	North Coastal Granular Toad	5	
Hylidae	<i>Rhinella marina</i> (Linnaeus, 1758) ^{2, 3, 4}	South American Cane Toad	37	
	<i>Boana lanciformis</i> (Cope, 1870) ³	Rocket Treefrog	1	
	<i>Boana boans</i> (Linnaeus, 1758) ^{2, 3}	Giant Gladiator Treefrog	2	
	<i>Boana xerophylla</i> (Duméril & Bibron, 1841) ^{2, 3}	Emerald-eyed Treefrog	2	
	<i>Boana maculateralis</i> (Caminer and Ron, 2014) ¹	Stained Treefrog	1	
	<i>Boana pellucens</i> (Werner, 1901) ⁵	Palm Treefrog	1	
	<i>Boana rosenbergi</i> (Boulenger, 1898) ⁵	Rosenberg's Gladiator Frog	1	
	<i>Dendropsophus minutus</i> (Peter 1872) ²	Lesser Treefrog	1	
	<i>Scinax elaeochroa</i> (Cope, 1875) ⁵	Olive Snouted Treefrog	1	
	<i>Scinax quinquefasciatus</i> (Fowler, 1913) ⁵	Fowler's Snouted Treefrog	1	
	<i>Scinax rostratus</i> (Peters, 1863) ^{1, 3}	Caracas Snouted Treefrog	3	
	<i>Scinax ruber</i> (Laurenti, 1768) ²	Common Snouted Treefrog	1	
	<i>Smilisca phaeota</i> (Cope, 1862) ⁵	New Granada Cross-banded Treefrog	1	
	<i>Sphaenorhynchus lacteus</i> (Daudin, 1800) ¹	Orinoco Lime Treefrog	1	
	<i>Trachycephalus jordani</i> (Stejneger & Test, 1891) ⁵	Jordan's Casque-headed Treefrog	1	
	<i>Dendropsophus molitor</i> (Schmidt, 1857) ³	Green Dotted Treefrog	28	
	Leptodactylidae	<i>Adenomera hylaedactyla</i> (Cope 1868) ^{2, 3}	Napo Tropical Bullfrog	2
		<i>Physalaemus fischeri</i> (Boulenger, 1890) ³	Fischer's Dwarf Frog	1
<i>Engystomops pustulosus</i> (Cope, 1864) ⁴		Túngara Frog	3	
<i>Leptodactylus colombiensis</i> (Heyer, 1994) ³			2	
<i>Leptodactylus fuscus</i> (Schneider, 1799) ³		Rufous frog	7	
<i>Leptodactylus ventrimaculatus</i> (Boulenger, 1902) ⁵		Spotted-vented Thin-toed Frog	2	
	<i>Lithodytes lineatus</i> (Schneider, 1799) ^{1, 3}	Painted Antnest Frog	2	

Sampling location: ¹ Guaviare, ² Boyacá, ³ Cundinamarca, ⁴ Santander, ⁵ Nariño.

non-normal distribution, so a Wilcoxon's rank test for two variables was calculated to compare quantitative variables, and a Fisher exact test was used to compare qualitative variables. For the hypothesis test, *P values* less than 0.05 were considered significant.

RESULTS

A total of 116 amphibia were analyzed; 53.5 % of the samples showed mitotic cells in

different phases in the peripheral blood (Fig. 1). The mitotic index observed was low; overall, less than two mitotic cells per thousand RBCs. The prevalence of blood parasites in the sample was 30.1 %, being 70.3 % with single infections and 29.7 % with mixed infections. The identified blood parasites were *Trypanosoma* 24.1 % (28/116), *Hepatozoon*-like (Named as *Hepatozoon*-like and *Karyolysus*-like due to the lack of molecular diagnosis that does not allow accurate classification of those parasites)

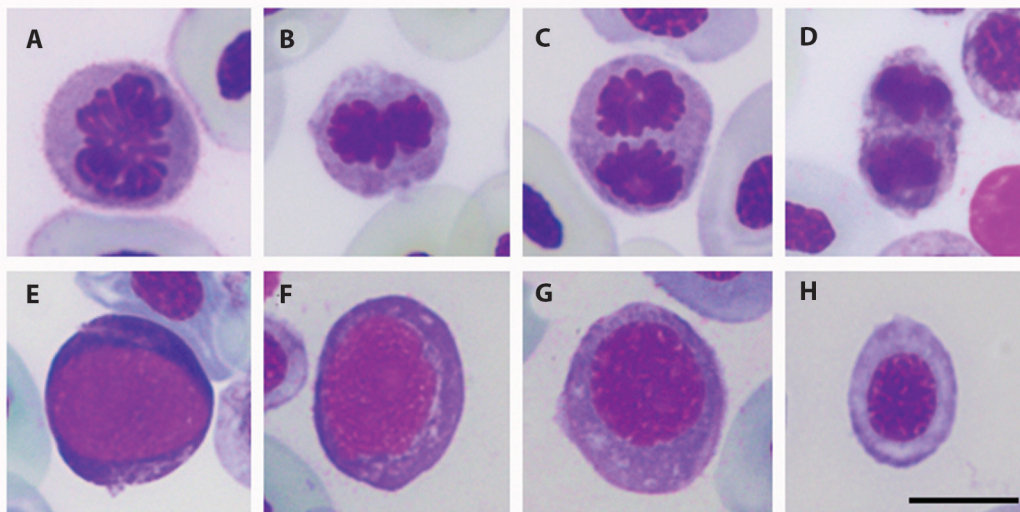


Fig. 1. Phases of mitosis and immature RBCs observed in peripheral blood smears of Colombian amphibians included in the study. **A.** Mitotic cell in prophase; **B.** Mitotic cell in metaphase; **C.** Mitotic cell in anaphase; **D.** Mitotic cell in telophase; **E-H.** Immature Red blood cells at different maturation stages. Giemsa stain. Scale bar: 10 μ m.

6 % (7/116), *Dactylosoma* 4.3 % (5/116), *Karyolysus*-like¹ 0.9 % (1/116), and Filarioidea 2.6 % (3/116) (Fig. 2; Digital Appendix). The percentage of immature RBCs in individuals with mitosis ranged between 0.86-80.08 % (15.76 ± 15.99), while individuals without mitosis had percentages less than 8.98 % (2.1 ± 2.3) (Digital Appendix). All the infected samples had parasitemias that ranged between 0.01 and 3 %, except for one *Rhinella beebei* whose parasitemia for *Dactylosoma* sp. was 16 % (Digital Appendix). Given that most of the samples were collected at low altitudes (75.9 % of the samples were collected between 0 and 1 117 m.a.s.l.; Digital Appendix) and some species have a low number of individuals sampled (e.g., *Lithodytes lineatus* N = 2), there was no possibility to statistically analyze a tendency of parasitic altitudinal distribution nor the host species and its association with mitosis in peripheral blood.

Percentage of immature RBCs and mitosis: By carrying out a morphological comparison between cells in mitosis and immature RBCs, some standard features were found: both cell types showed a roundish form and

a basophilic cytoplasm, as demonstrated by the Giemsa stain (Fig. 1). Due to these morphological similarities and literature reports, we propose that those mitotic processes may be occurring in immature cells, thereby, an increase in the percentage of immature RBCs in peripheral blood could be related to the presence of mitotic cells. Comparing samples that show mitosis with those without mitosis, using a Wilcoxon's rank test, a significant difference in the percentage of immature cells in peripheral blood was found ($P < 0.0001$).

Percentage of immature RBCs and blood parasites: The comparison of the percentage of immature RBCs between samples with a positive and negative diagnosis for blood parasites also showed a significant difference (Wilcoxon's rank test, $P < 0.001$). However, the percentage of parasitemia and immature RBCs did not correlate (data not shown).

Mitosis and blood parasites: An association between mitosis and blood parasites were assessed; 25 out of 35 infected samples show mitosis, and by applying a Fisher exact test, we identified an association between the

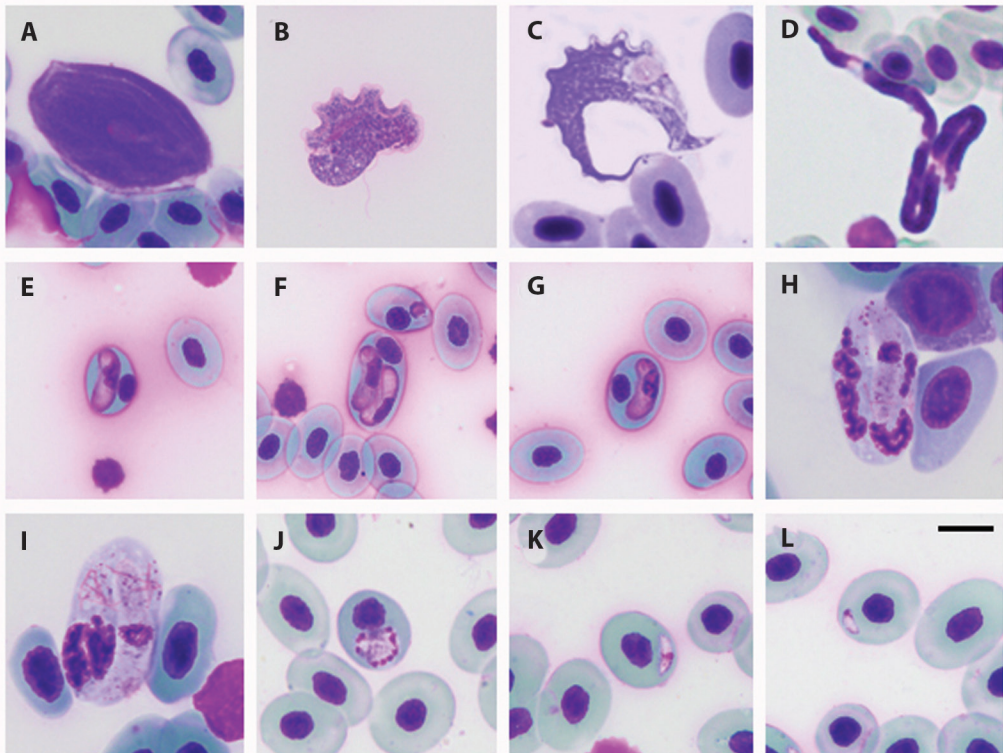


Fig. 2. Blood parasites infecting Colombian amphibians analyzed in the study **A-C.** *Trypanosoma*; **D.** *Microfilaria*; **E-G.** *Hepatozoon*-like; **H-I.** *Karyolysus*-like; **J-L.** *Dactylosoma*. Giemsa stain. Scale bar: 10 μ m; Differences in the sizes of RBCs are due to their belonging to different host species.

infection by blood parasites and the presence of mitosis in peripheral blood ($\chi^2_1 = 12.46$ and $P < 0.0001$); although, there is no association between parasitemia and presence of mitosis (Wilcoxon's rank test, $P > 0.05$).

DISCUSSION

There are limited reports on erythrocytic mitosis in amphibian's peripheral blood (Thomas & Maclean, 1974; Glomski et al., 1997). This is the first report of this subject in Colombia and for the species analyzed here; it also represents the study of erythrocytic mitosis in the largest sample of amphibians. Our results evidenciate how often this phenomenon occurs in amphibians and discuss its possible causes.

Previous reports have shown that mitotic RBCs in peripheral blood occur in immature

RBCs, but not in mature RBCs (Chegini, Aleporou, Bell, Hilder, & Maclean, 1979). Our results also show that mitosis is present in immature RBCs due to the association evidenced between the presence of mitosis and the percentage of immature RBCs in peripheral blood and the morphological features shared between them (Fig. 1). The presence of a high number of immature RBCs at different stages of maturation (as determined by their basophilic cytoplasm, roundish form, nucleus occupying the best part of the cellular body, and the less condensed chromatin) (Fig. 1) is an indicator of active erythropoiesis (Crouch & Kaplow, 1985) that can be triggered by respiratory stress or anemia (Nogawa-Kosaka et al., 2011).

The presence of blood parasites has been associated with physiological conditions, such as anemia (Saggese, 2009), and a regenerative

response to this stress induces the early release of immature RBCs to peripheral blood. Our results suggest that this phenomenon is accompanied by mitosis of these immature RBCs in peripheral blood in amphibians. Regenerative anemia has been shown to induce increased immature RBCs in birds (Campbell, 2004), reptiles (Saggese, 2009), and fish (Clauss, Dove, & Arnold, 2008). The data obtained here do not allow us to determine the presence of anemia in the sampled animals because of the absence of a physical evaluation of them and the lack of hemoglobin data concentrations. Nonetheless, the high percentage of immature RBCs found in the organisms allows us to consider that perhaps anemia was present in the individuals sampled since the presence of such cells in peripheral blood and anemia have been correlated before (Thomas & Maclean, 1974; Saggese, 2009).

Blood parasites were found infecting 30.1 % of the sampled individuals with parasitemias ranged between 0.01 and 16 % (Digital Appendix). *Trypanosoma* was the most prevalent genus found, infecting 24.1 % of the animals sampled, while Filarioidea was the less prevalent type of parasite (2.6 %). It is also important to highlight the diversity of intracellular parasites found, parasites tentatively belonging to the genus *Hepatozoon*, *Dactylosoma*, and *Karyolysis*, which were diagnosed by microscopic analysis. Amphibians are a group of vertebrates highly infected by parasites, bacteria, fungus, and viruses; due to their habits, which often combine terrestrial and aquatic environments, they are usually exposed to different conditions that ease those infections. Additionally, their habits, for example, promote the interaction with hematophagous insects and leeches, both vectors for the transmission of different blood parasites (Ferreira, Perles, Machado, Prado, & André, 2020). This study presents some insights regarding blood parasite prevalence and diversity in Colombian amphibians, although it is important to complement this information reported by microscopic analysis with molecular approaches

that allow a complete characterization of the parasites found.

Some reports in lizards show the presence of high numbers of immature RBCs in peripheral blood associated with blood parasite infections (Martínez-Silvestre, Mateo, Silveira, & Bannert, 2001; Martínez-Silvestre & Arribas, 2014). Intracellular blood parasites, like *Hepatozoon*, *Dactylosoma*, *Karyolysis*, and *Plasmodium*, may be related to anemia due to the disruption of the RBCs caused by some of the parasites' life stages. This phenomenon has been reported in several species like *Sceloporus occidentalis* and other lizards (Schall 1982; Barta, 1991; Peirce & Adlard, 2004). Extracellular parasites, like *Trypanosoma* or Filarioidea, are associated with a decrease in RBCs count, hematocrit and hemoglobin levels (Maqbool & Ahmed, 2016), inflammation, and tissue degeneration of skeletal heart muscle in Australian mammals (Thompson, Godfrey, & Thompson, 2014). *Trypanosoma* experimental infection has been associated with food refusal resulting in death in European green frogs and Canadian frogs (Reichenbach-Klink & Elkan, 1965). Extracellular hemoparasitic infections have also been associated with anemia (Amole, Clarkson, & Shear 1982; Silva, Herrera, Domingos, Ximenes, & Dávila, 1995; Stijlemans et al., 2018).

Our possible explanation for the presence of mitotic cells in peripheral blood in an infected organism is that those parasitic organisms could induce anemia in their host. As a response, immature RBCs are released to the peripheral blood. Those cells would finish their maturation in the peripheral blood and could divide to increase the number of RBCs to offset anemia. This explanation could be supported by the association found between the presence of mitotic RBCs and the percentage of immature RBCs in peripheral blood, and by the association between the percentage of immature RBCs and the presence of blood parasites.

Further research based on experimental trials is needed to confirm the hypothesis here proposed and to evaluate other factors that can also induce similar physiological responses to



heavy metal pollutants, antifungals, or other toxic agents (Preetpal, 2014).

Ethical statement: authors declare that they all agree with this publication and made significant contributions; that there is no conflict of interest of any kind; and that we followed all pertinent ethical and legal procedures and requirements. All financial sources are fully and clearly stated in the acknowledgements section. A signed document has been filed in the journal archives.

ACKNOWLEDGMENTS

This study was supported by the “Ministerio de Ciencia, Tecnología e Innovación”, previously named “Colciencias”, by the project code No 1101-776-57872, and the special cooperation agreement No 80740-287-2019. The authors wish to thank the members of the GERPH group, especially Andres Felipe Aponte, for fieldwork, and Juan José Rubio for the statistical orientation. We also want to extend our acknowledgment to the anonymous reviewers of this paper, because of their valuable comments that contributed to the article.

RESUMEN

¿Causan los parásitos sanguíneos un aumento en los eritrocitos inmaduros y la mitosis en los anfibios?

Introducción: En anfibios, la sangre puede actuar como un tejido hematopoyético. Sin embargo, el conocimiento acerca de las características hematológicas es escaso y no hay información que permita un análisis acerca de las posibles explicaciones a este rasgo fisiológico. **Objetivo:** La intención de este estudio fue evaluar la relación entre la presencia de eritroblastos, mitosis de glóbulos rojos (GRs) y la infección por hemoparásito en sangre periférica de anfibios. **Métodos:** Se muestrearon 116 anfibios (31 especies) en seis localidades de Colombia. Se tomaron muestras de sangre mediante punción cardíaca o punción a la vena maxilar. Se prepararon extendidos sanguíneos, se fijaron y tiñeron con Giemsa para su posterior análisis por microscopía. Se analizaron variables como porcentaje de GRs inmaduros, células mitóticas en sangre periférica e infección por hemoparásitos. Los datos fueron analizados mediante el test de rango de Willcoxon y el test exacto de Fisher. **Resultados:** sesenta y dos individuos evidenciaron

mitosis en sangre periférica y dichas mitosis compartían características morfológicas con GRs inmaduros. La prevalencia general de parásitos fue del 30.1 %, distribuido de la siguiente forma: *Trypanosoma* (24.1 %), *Hepatozoon-like* (6 %), *Dactylosoma* (4.3 %), *Karyolysus-like* (0.9 %), y Filarioidea (2.6 %). Hay una asociación positiva entre el porcentaje de GRs inmaduros y la presencia de células mitóticas, también se encontró una relación entre la infección por hemoparásitos y el porcentaje de GRs inmaduros. **Conclusiones:** En este estudio encontramos que la presencia de parásitos sanguíneos, GRs inmaduros y mitosis de GRs son eventos frecuentes en sangre periférica de anfibios, y nuestros resultados sugieren una asociación entre dichas características. Por tanto, la liberación de GRs inmaduros y la mitosis de estas células en sangre periférica podría ser una respuesta fisiológica a infecciones parasitarias. Posteriores estudios que caractericen la hematología en anfibios y en vida silvestre en general, son deseables.

Palabras clave: anemia; Colombia; eritropoyesis; hemoparásitos; glóbulos rojos; sangre periférica.

REFERENCES

- Akulenko, N. (2012). Haemopoietic System of the Anurans: The Role of Bone Marrow and Liver. *Vestnik Zoologii*, 46(4), 28-35. DOI: 10.2478/v10058-012-0027-8
- Altland, P.D., & Brace, K.C. (1962). Red Cell Life Span in the Turtle and Toad. *American Journal of Physiology-Legacy Content*, 203(6), 1188-1190. DOI: 10.1152/ajplegacy.1962.203.6.1188
- American Veterinary Medical Association (AVMA). (2020). *AVMA Guidelines for the Euthanasia of Animals*. Retrieved from <https://www.avma.org/sites/default/files/2020-01/2020-Euthanasia-Final-1-17-20.pdf>
- Amole, B.O., Clarkson, A.B., & Shear, H.L. (1982). Pathogenesis of Anemia in *Trypanosoma brucei* - Infected Mice. *Infection and Immunity*, 36(3), 1060-1068. DOI: 10.1128/iai.36.3.1060-1068.1982
- Arikan, H., & Cicek, K. (2014). Haematology of Amphibians and Reptiles: A Review. *North-Western Journal of Zoology*, 10(1), 190-209.
- Barta, J.R. (1991). The Dactylosomatidae. *Advances in Parasitology*, 30, 1-37. DOI: 10.1016/S0065-308X(08)60305-X
- Benedikt, V., Barus, V., Capek, M., Havlicek, M., & Litrak, I. (2009). Blood parasites (Haemoproteus and microfilariae) in birds from the Caribbean slope of Costa Rica. *Acta Parasitologica*, 54(3), 197-204.
- Bouhafs, N., Berrebbah, H., Devaux, A., Rouabhi, R., & Djebbar, M.R. (2009). Micronucleus Induction in Erythrocytes of Tadpole *Rana saharica* (Green Frog of North Africa) Exposed to Artea 330EC.

- American-Eurasian Journal of Toxicological Sciences*, 1(1), 7-12.
- Campbell, T.W. (2004). *Hematology of Lower Vertebrates*. 55th Annual Meeting of the American College of Veterinary Pathologists (ACVP) & 39th Annual Meeting of the American Society of Clinical Pathology (ASVCP). New York, EUA. Retrieved from <https://wildlifehematology.uga.edu/FurtherReading/Campbell%202004.pdf>
- Chegini, N., Aleporou, V., Bell, G., Hilder, V.A., & Maclean, N. (1979). Production and Fate of Erythroid Cells in Anaemic *Xenopus laevis*. *Journal of Cell Science*, 35(1), 403-415.
- Clauss, T.M., Dove, A.D., & Arnold, J.E. (2008). Hematologic Disorders of Fish. *Veterinary Clinics of North America - Exotic Animal Practice*, 11(3), 445-462.
- Claver, J.A., & Quaglia, A.I. (2009). Comparative Morphology, Development, and Function of Blood Cells in Nonmammalian Vertebrates. *Journal of Exotic Pet Medicine*, 18(2), 87-97. DOI: 10.1053/j.jepm.2009.04.006
- Collicutt, N.B., Grindem, C.B., & Neel, J.A. (2012). Comparison of Manual Polychromatophilic Cell and Automated Reticulocyte Quantification in Evaluating Regenerative Response in Anemic Dogs. *Veterinary Clinical Pathology*, 41(2), 256-260. DOI: 10.1111/j.1939-165X.2012.00432.x
- Crouch, J.Y., & Kaplow, L.S. (1985). Relationship of Reticulocyte Age to Polychromasia, Shift Cells, and Shift Reticulocytes. *Archives of Pathology & Laboratory Medicine*, 109(4), 325-329.
- Cumano, A., & Godin, I. (2007). Ontogeny of the Hematopoietic System. *Annual Review of Immunology*, 25(1), 745-785. DOI: 10.1146/annurev.immunol.25.022106.141538
- Dawson, A.B. (1930). Differentiation and Multiplication by Mitosis of Cells of the Erythrocytic Series in the Circulating Blood of Several Normal Urodeles. *The Anatomical Record*, 45(2), 177-187.
- Dawson, A.B. (1933). An Experimental Study of Hemopoiesis in *Necturus*: Effects of Lead Poisoning on Normal and Splenectomized Animals. *Journal of Morphology*, 55(2), 349-385. DOI: 10.1002/jmor.1050550206
- de Abreu Manso, P.P., de Brito-Gitirana, L., & Pelajo-Machado, M. (2009). Localization of Hematopoietic Cells in the Bullfrog (*Lithobates catesbeianus*). *Cell and Tissue Research*, 337(2), 301-312. DOI: 10.1007/s00441-009-0803-0
- Desser, S.S. (2001). The Blood Parasites of Anurans from Costa Rica with Reflections on the Taxonomy of Their Trypanosomes. *The Journal of Parasitology*, 87(1), 152. DOI: 10.2307/3285193
- Dissanayake, D.S., Thewarage, L.D., Rathnayake, R.M., Kularatne, S.A., Ranasinghe, J.G. S., & Rajapakse, R.P. (2017). Hematological and Plasma Biochemical Parameters in a Wild Population of *Naja naja* (Linnaeus, 1758) in Sri Lanka. *Journal of Venomous Animals and Toxins Including Tropical Diseases*, 23(1), 1-9. DOI: 10.1186/s40409-017-0098-7
- Ferreira, D.D.A.R., Perles, L., Machado, R.Z., Prado, C.P., & André, M.R. (2020). Molecular detection of Apicomplexan hemoparasites in anurans from Brazil. *Parasitology Research*, 119(10), 3469-3479.
- Ferreira, J.I.D.S., da Costa, A.P., Ramirez, D., Roldan, J.A., Saraiva, D., Fournier, G.F.D.S., ... Marcili, A. (2015). Anuran Trypanosomes: Phylogenetic Evidence for New Clades in Brazil. *Systematic Parasitology*, 91(1), 63-70. DOI: 10.1007/s11230-015-9558-z
- Forzán, M.J., Heatley, J., Russell, K.E., & Horney, B. (2017). Clinical Pathology of Amphibians: A Review. *Veterinary Clinical Pathology*, 46(1), 11-33. DOI: 10.1111/vcp.12452
- Fox, J., & Bouchet-Valat, M. (2019). *Rcmdr* (Version 2.7-1). Retrieved from <https://cran.r-project.org/web/packages/Rcmdr/index.html>
- Haklová-Kočičková, B., Hižnanová, A., Majláth, I., Račka, K., Harris, D.J., Földvári, G., ... Majláthová, V. (2014). Morphological and Molecular Characterization of *Karyolysus*- a Neglected but Common Parasite Infecting Some European Lizards. *Parasites & Vectors*, 7(1), 555. DOI: 10.1186/s13071-014-0555-x
- Glomski, C.A., Tamburlin, J., Hard, R., & Chainani, M. (1997). The Phylogenetic Odyssey of the Erythrocyte. IV. The Amphibians. *Histology and Histopathology*, 12(1), 147-70.
- González-Mille, D.J., Espinosa-Reyes, G., del Carmen Cuevas-Díaz, M., Martínez-Toledo, A., Carrizalez-Yáñez, L., García-Arreola, M.E., & Ilizaliturri-Hernández, C.A. (2019). Evaluation of the Biological Activity of Soil in a Gradient Concentration of Arsenic and Lead in Villa de La Paz, San Luis Potosí, Mexico. In D. Vázquez-Luna & M.C. Cuevas-Díaz (Eds.), *Soil Contamination and Alternatives for Sustainable Development* (pp. 35-55). London, UK: IntechOpen. DOI: 10.5772/intechopen.80031
- Jordan, H.E., & Speidel, C.C. (1930). The Hemocytopoietic Effect of Splenectomy in the Salamander, *Triturus viridescens*. *American Journal of Anatomy*, 46(1), 55-90. DOI: 10.1002/aja.1000460103
- Maceda-Veiga, A., Figuerola, J., Martínez-Silvestre, A., Viscor, G., Ferrari, N., & Pacheco, M. (2015). Inside the Redbox: Applications of Haematology in Wildlife Monitoring and Ecosystem Health Assessment. *Science of the Total Environment*, 514, 322-332.
- Maqbool, A., & Ahmed, I. (2016). Haematological Response of Snow Barbell, *Schizothorax plagiostomus*



- Heckel, Naturally Infected with a New *Trypanosoma* Species. *Journal of Parasitic Diseases*, 40(3), 791-800. DOI: 10.1007/s12639-014-0580-x
- Martinez-Silvestre, A., & Arribas, O. (2014). Blood Differential Count and Effect of Haemoparasites in Wild Populations of Pyrenean Lizard *Iberolacerta aurelioi* (Arribas, 1994). *Basic and Applied Herpetology*, 28, 79-86.
- Martinez-Silvestre, A., Mateo, J.A., Silveira, L., & Bannert, B. (2001). Presencia de Protozoos Intraeritrocitarios En El Lagarto Gigante de La Gomera (*Gallotia simonyi gomerana*). *Boletín de La Asociación Herpetológica Española*, 12, 90-92.
- Martinho, F. (2012). Blood Transfusion in Birds. *Revista Lusófona de Ciência e Medicina Veterinária*, 5, 1-30.
- Mitsuru, K. (1981). Relationships between Number, Size and Shape of Red Blood Cells in Amphibians. *Comparative Biochemistry and Physiology-Part A: Physiology*, 69(4), 771-775. DOI: 10.1016/0300-9629(81)90170-5
- Motz, V.L., Lewis, W.D., & Vardo-Zalik, A.M. (2014). Leukocyte Profiles for Western Fence Lizards, *Sceloporus occidentalis*, Naturally Infected by the Malaria Parasite *Plasmodium Mexicanum*. *Journal of Parasitology*, 100(5), 592-597. DOI: 10.1645/13-371.1
- Netherlands, E.C., Cook, C.A., & Smit, N.J. (2014). *Hepatozoon* Species (Adeleorina: Hepatozoidae) of African Bufonids, with Morphological Description and Molecular Diagnosis of *Hepatozoon ixoxo* Sp. Nov. Parasitising Three *Amietophrynus* Species (Anura: Bufonidae). *Parasites and Vectors*, 7(1), 552. DOI: 10.1186/s13071-014-0552-0
- Nguete, D., Wondji, C.S., Pone, J., & Mpoame, M. (2019). Microfilariae Infestation of Goliath Frogs (*Conraua goliath*) from Cameroon. *PLoS ONE*, 14(5), e0217539. DOI: 10.1371/journal.pone.0217539
- Nogawa-Kosaka, N., Sugai, T., Nagasawa, K., Tanizaki, Y., Meguro, M., Aizawa, Y., ... Kato, T. (2011). Identification of Erythroid Progenitors Induced by Erythropoietic Activity in *Xenopus Laevis*. *Journal of Experimental Biology*, 214(6), 921-27.
- Okui, T., Yamamoto, Y., Maekawa, S., Nagasawa, K., Yonezuka, Y., Aizawa, Y., & Kato, T. (2013). Quantification and Localization of Erythropoietin-Receptor-Expressing Cells in the Liver of *Xenopus laevis*. *Cell and Tissue Research*, 353(1), 153-164. DOI: 10.1007/s00441-013-1624-8
- Peirce, M.A., & Adlard, R.D. (2004). Haemoparasites from Clinical Screening of Reptiles in South-East Queensland, Australia. *Veterinary Record*, 155(22), 708-709. DOI: 10.1136/vr.155.22.708
- Petit, G., Landau, I., Baccam, D., & Lainson, R. (1990). Description et Cycle Biologique d' *Hemolivia stellata* n. g., n. Sp., Hémogrégarine de Crapauds Brésiliens. *Annales de Parasitologie Humaine et Comparée*, 65(1), 3-15. DOI: 10.1051/parasite/1990651003
- Plum, C.M. (1953). Mitosis in the Circulating Blood. *Acta Hematológica*, 11(1), 52-54.
- Preetpal, K. (2014). *Genotoxic Effects of Some Heavy Metals on Frogs (Amphibians)* (Doctoral thesis). University of Jammu, Jammu, India.
- R Core Team. (2020). *R: A Language and Environment for Statistical Computing*. R Foundation for Statistical Computing, Vienna, Austria. Retrieved from <http://www.R-project.org>
- Reichenbach-Klink, H., & Elkan, E. (1965). *The Principle Diseases of the Lower Vertebrates*. New York, EUA: Academic Press.
- Saggese, M.D. (2009). Clinical Approach to the Anemic Reptile. *Journal of Exotic Pet Medicine*, 18(2), 98-111. DOI: 10.1053/J.JEPM.2009.04.003
- Schall, J.J. (2002). Parasite Virulence. In E.E. Lewis, J.F. Campbell, & M.V.K. Sukhdeo (Eds.), *The Behavioural Ecology of Parasites* (pp. 283-314). New York, EUA: CABI Publishing.
- Schall, J.J. (1982). Lizards Infected with Malaria: Physiological and Behavioral Consequences. *Science*, 217(4564), 1057-1059.
- Silva, R.A.M.S., Herrera, H.M., Domingos, L.B.D.S., Ximenes, F.A., & Dávila, A.M.R. (1995). Pathogenesis of *Trypanosoma evansi* Infection in Dogs and Horses: Hematological and Clinical Aspects. *Ciência Rural*, 25(2), 233-238. DOI: 10.1590/s0103-84781995000200010
- Stijlemans, B., De Baetselier, P., Magez, S., Van Ginderachter, J.A., & De Trez, C. (2018). African Trypanosomiasis-Associated Anemia: The Contribution of the Interplay between Parasites and the Mononuclear Phagocyte System. *Frontiers in Immunology*, 9, 1-15. DOI: 10.3389/fimmu.2018.00218
- Tanaka, Y. (1976). Architecture of the Marrow Vasculature in Three Amphibian Species and Its Significance in Hematopoietic Development. *American Journal of Anatomy*, 145(4), 485-497. DOI: 10.1002/aja.1001450407
- Thomas, N., & Maclean, N. (1974). The Blood as an Erythropoietic Organ in Anaemic *Xenopus*. *Experientia*, 30(9), 1083-1085. DOI: 10.1007/BF01939024
- Thompson, C.K., Godfrey, S.S., & Thompson, R.A. (2014). Trypanosomes of Australian Mammals: A Review. *International Journal for Parasitology: Parasites and Wildlife*, 3(2), 57-66.
- Valkiūnas, G. (2005). *Avian malaria parasites and other haemosporidia*. Florida, EUA: CRC Press.



- Vardo-Zalik, A.M., & Schall, J.J. (2008). Clonal Diversity within Infections and the Virulence of a Malaria Parasite, *Plasmodium mexicanum*. *Parasitology*, 135(12), 1363-1372. DOI: 10.1017/S0031182008004964
- Yaparla, A., Reeves, P., & Grayfer, L. (2020). Myelopoiesis of the Amphibian *Xenopus laevis* Is Segregated to the Bone Marrow, Away From Their Hematopoietic Peripheral Liver. *Frontiers in Immunology*, 10, 1-12. DOI: 10.3389/fimmu.2019.03015
- Zapata, A., Gomariz, R.P., Garrido, E., & Cooper, E.L. (1982). Lymphoid Organs and Blood Cells of the Caecilian *Ichthyophis kohtaoensis*. *Acta Zoologica*, 63(1), 11-16. DOI: 10.1111/j.1463-6395.1982.tb00753.x
- Žižkus, T. (2002). The First Data on the Fauna and Distribution of Blood Parasites of Amphibians in Lithuania. *Acta Zoologica lituanica*, 12(2), 197-202. DOI: 10.1080/13921657.2002.10512506