



Supplementary material 2

Neighbor-joining tree of ACG *Mesochorus* specimens generated on BOLD. The holotype specimens are highlighted in red. The data included are (from left to right in each terminal) species name, unique identifier searchable on BOLD (DHJPAR codes are also searchable on the Janzen-Hallwachs database), host caterpillar or if not reared Malaise trap location, length of barcode, BIN code. In some cases, e.g., *Mesochorus* Janzen82, a species will not have a formal name. There are several reasons for this; there may not have been quality specimens in hand, or the specimens have not yet crossed Mike Sharkey's desk.

BOLD TaxonID Tree

Title: Tree Result - Search: Tax(Mesochorus); Geo(Costa Rica); Include public records (946 records returned)
(946 records selected)
Date: 12-Jun-2022
Data: Type Nucleotide
Distance: Model Kimura 2 Parameter
Marker: COI-SP
Colourization: [blue]=Stop Codons [red]=Contamination or misidentification

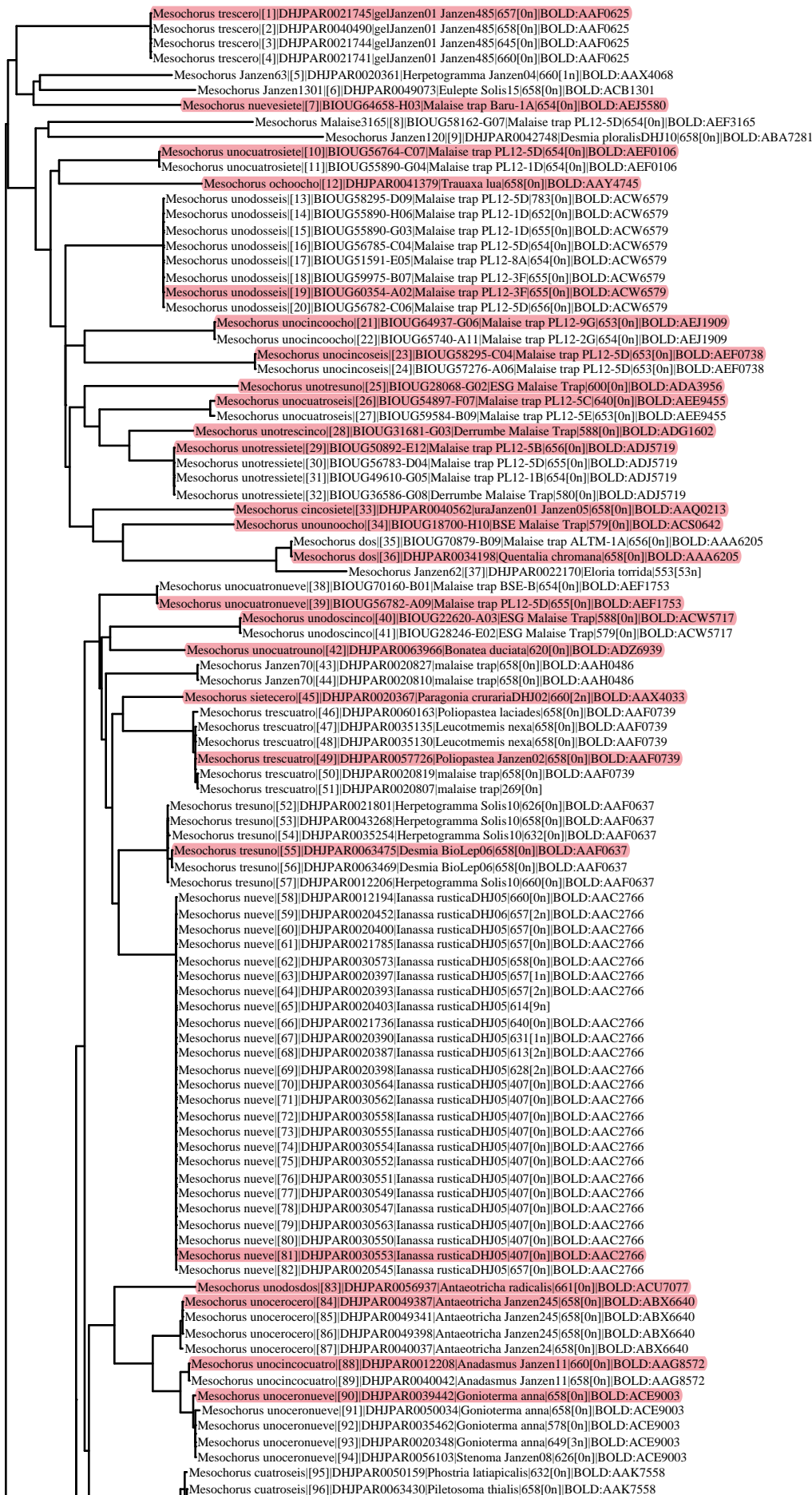
Label: Sample ID
Label: Taxon
Label: Extra Info
Label: Sequence Length
Label: Barcode Cluster (BIN)

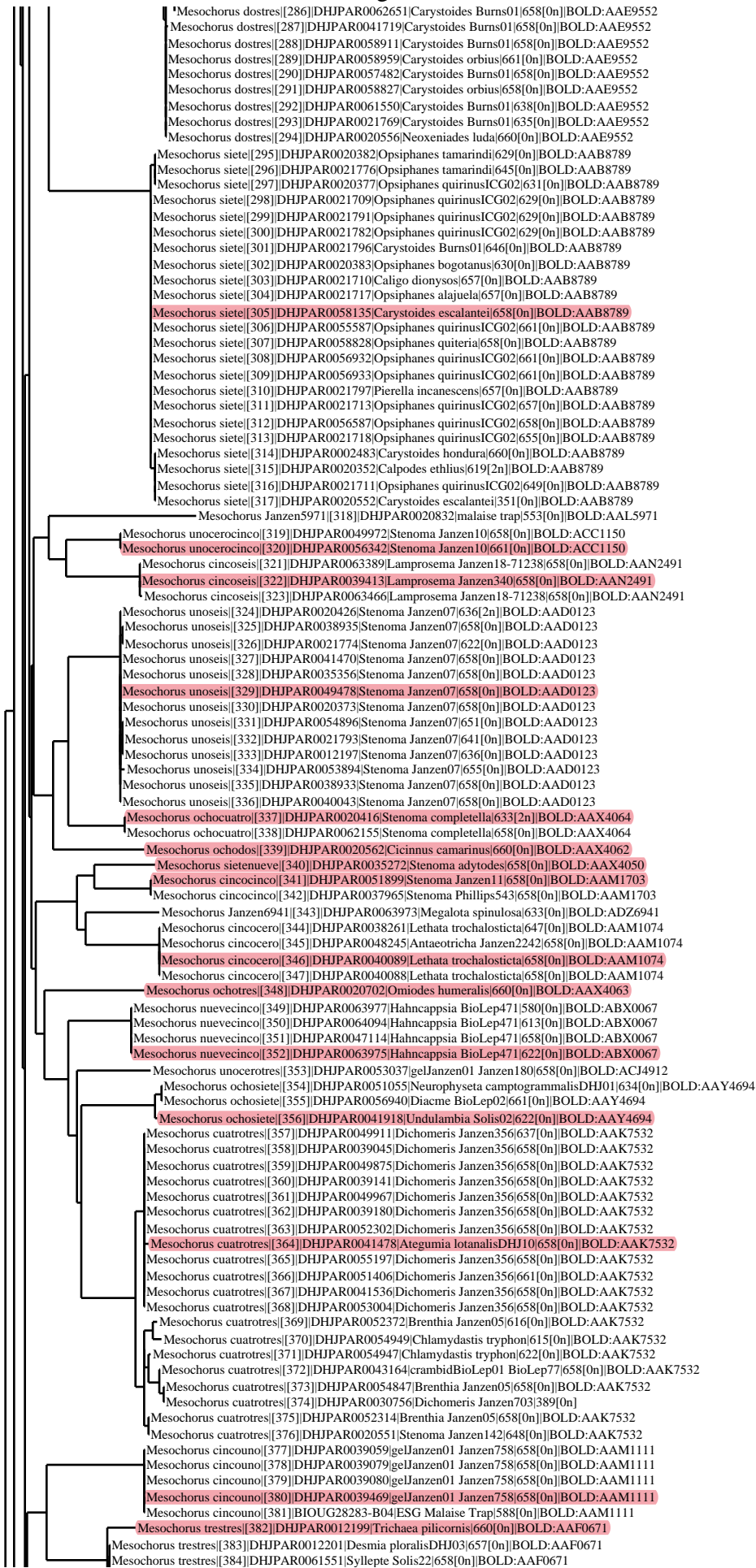
Filter: length > 200bp only
Filter: exclude records flagged as misidentifications
Filter: exclude records with stop codons
Filter: exclude contaminants

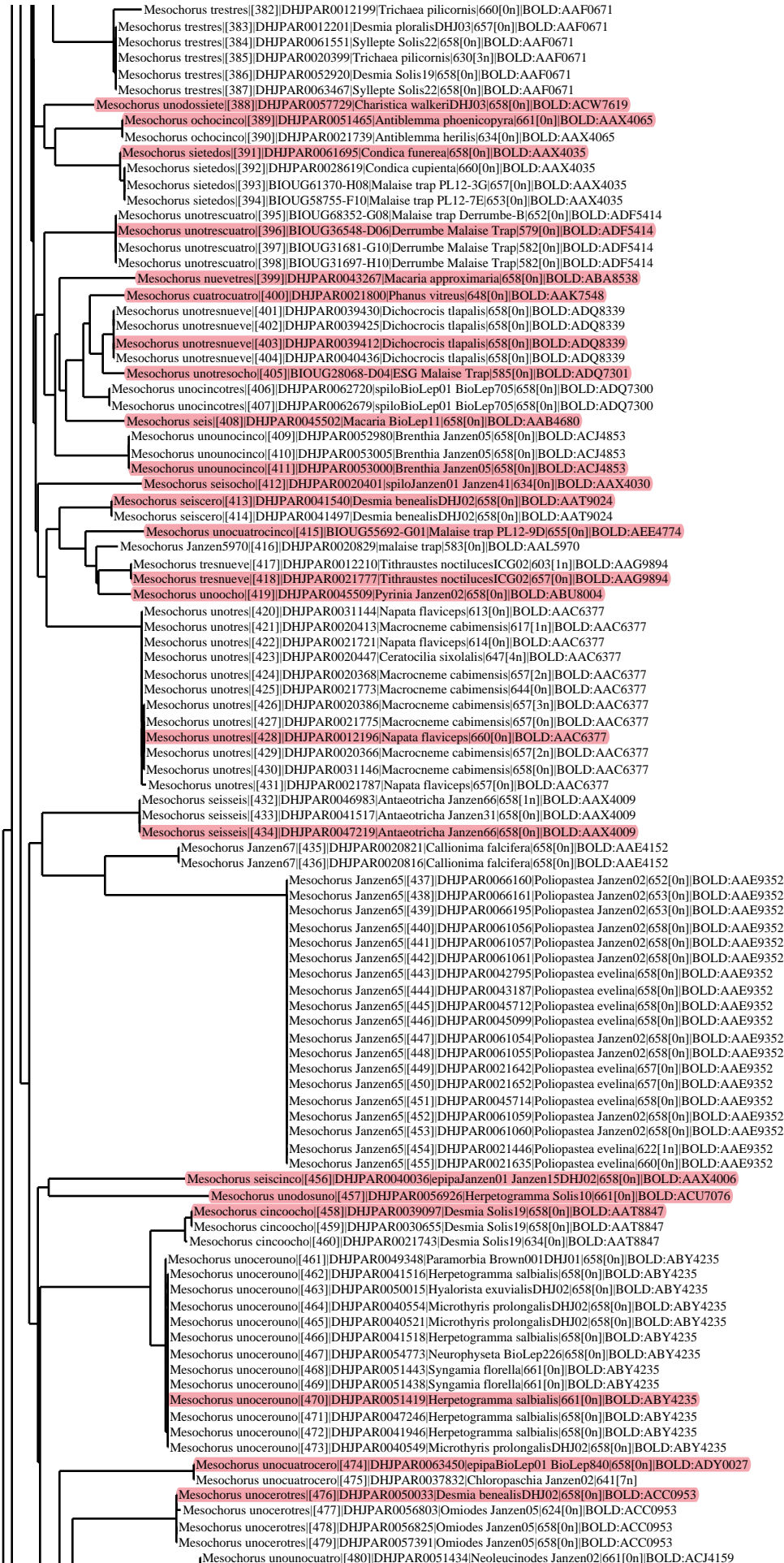
Sequence Count: 869
Species count: 182
Genus count: 1
Family count: 1
Unidentified: 1

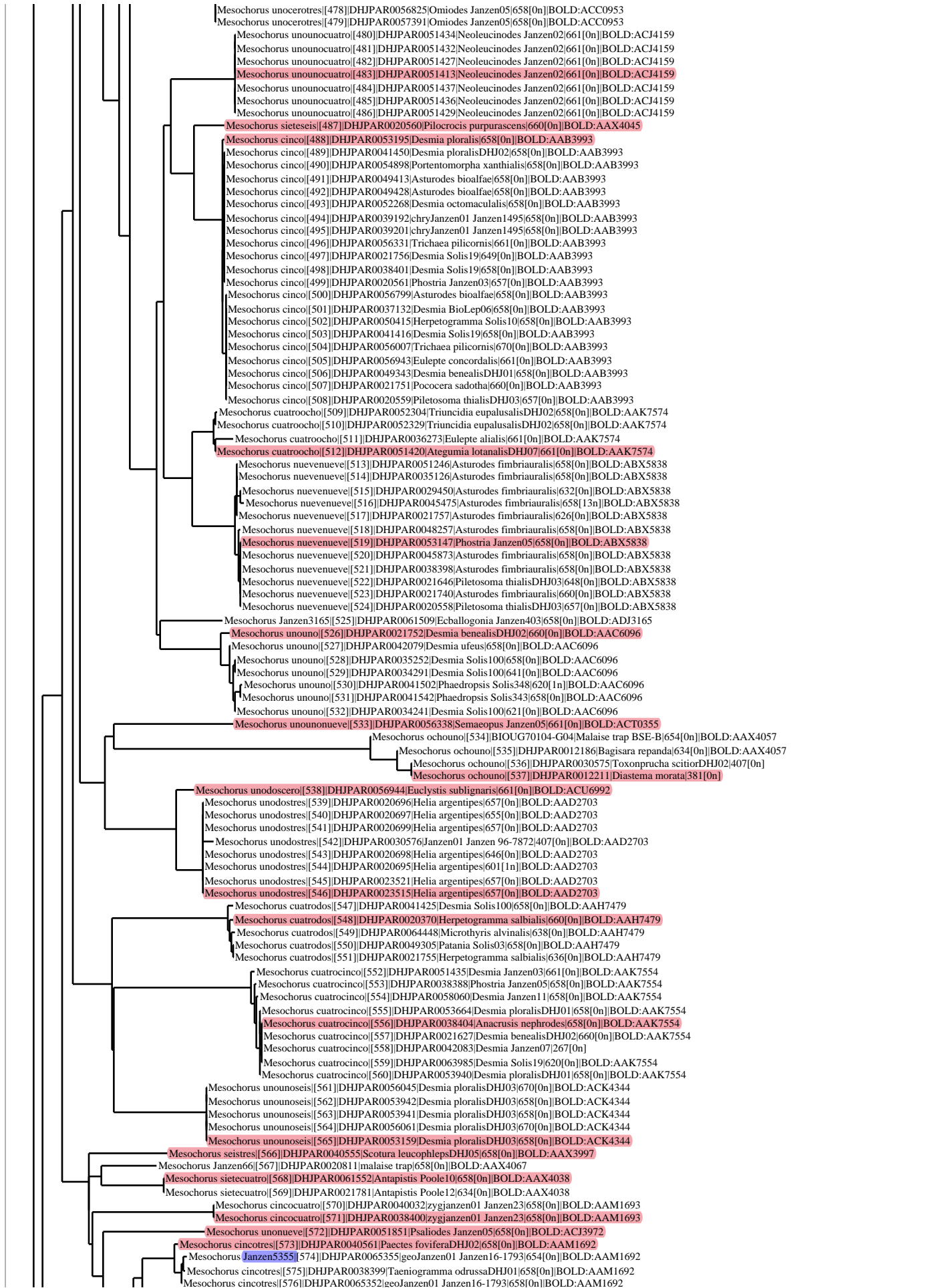
BIN Count: 179

5 %

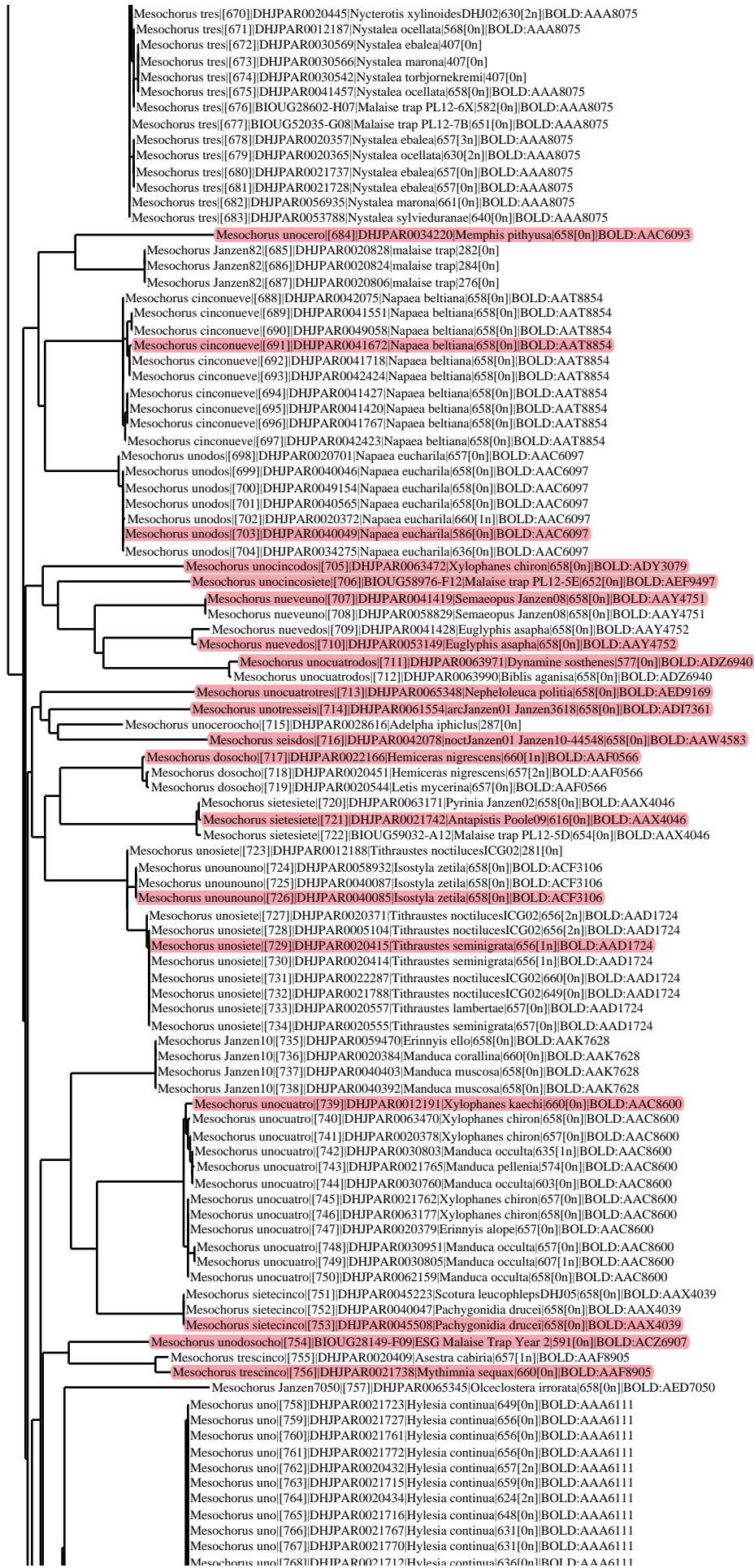








Mesochorus Janzen5355[574][DHJP0065355]geoJanzen01 Janzen16-1793[654[0n]]BOLD:AA1692
 Mesochorus cincotres[575][DHJP0038399]Taeniogramma odrussaDHJ01[658[0n]]BOLD:AA1692
 Mesochorus cincotres[576][DHJP0065352]geoJanzen01 Janzen16-1793[658[0n]]BOLD:AA1692
 Mesochorus unotrescero[577][BIOUG28085-C08ESG Malaise Trap]600[0n]]BOLD:ADA1951
 Mesochorus Malaise8748[578][DHJP0062595]Ithomia hippocrenis[658[0n]]BOLD:AEF8748
 Mesochorus nueveocho[579][DHJP0061553]Deinopa ostia[658[0n]]BOLD:AEI0702
 Mesochorus nueveocho[580][DHJP0020369]Deinopa signiplena[639[0n]]BOLD:AEI0702
 Mesochorus nueveocho[581][DHJP0045511]Deinopa signiplena[658[1n]]BOLD:AEI0702
 Mesochorus unocincocero[582][DHJP0045510]Trauxa lua[658[1n]]BOLD:AEI3256
 Mesochorus unocincocero[583][DHJP0065264]Ipanephis esperanzalis[658[0n]]BOLD:AEI3256
 Mesochorus sieteocho[584][DHJP0040084]Psaliodes Janzen03[658[0n]]BOLD:AA4047
 Mesochorus tres[585][DHJP0020396]Nycterotis xylinoidesDHJ02[268[0n]]
 Mesochorus tres[586][DHJP0020388]Nystalea ocellata[268[0n]]
 Mesochorus dosnueve[587][DHJP0020546]Scotura leucophlepsDHJ05[657[0n]]BOLD:AAF0585
 Mesochorus dosnueve[588][DHJP0020550]Scotura leucophlepsDHJ05[660[0n]]BOLD:AAF0585
 Mesochorus dosnueve[589][DHJP0021802]Scotura leucophlepsDHJ05[631[0n]]BOLD:AAF0585
 Mesochorus ocho[590][DHJP0021778]Elymiotis Janzen04[631[1n]]BOLD:AA0368
 Mesochorus ocho[591][DHJP0030380]Nagara vitrea[626[0n]]BOLD:AA0368
 Mesochorus ocho[592][DHJP0020437]Nystalea ebalea[657[4n]]BOLD:AA0368
 Mesochorus ocho[593][DHJP0020435]Nycterotis xylinoidesDHJ02[611[0n]]BOLD:AA0368
 Mesochorus ocho[594][DHJP0020360]Nystalea ebalea[655[8n]]BOLD:AA0368
 Mesochorus ocho[595][DHJP0020351]Elasmia mandela[657[1n]]BOLD:AA0368
 Mesochorus ocho[596][DHJP0030799]Nystalea inchoans[634[0n]]BOLD:AA0368
 Mesochorus ocho[597][DHJP0020407]Nystalea guzmanii[657[2n]]BOLD:AA0368
 Mesochorus ocho[598][DHJP0020446]Nystalea ebalea[634[2n]]BOLD:AA0368
 Mesochorus ocho[599][DHJP0020405]Nycterotis xylinoidesDHJ02[630[2n]]BOLD:AA0368
 Mesochorus ocho[600][DHJP0021734]Nystalea multiplexICG02[657[0n]]BOLD:AA0368
 Mesochorus ocho[601][DHJP0020394]Nystalea collarisDHJ13[657[0n]]BOLD:AA0368
 Mesochorus ocho[602][DHJP0030572]Nystalea ebalea[658[0n]]BOLD:AA0368
 Mesochorus ocho[603][DHJP0021714]Nystalea ocellata[660[0n]]BOLD:AA0368
 Mesochorus ocho[604][DHJP0030557]Nycterotis xylinoidesDHJ02[407[0n]]BOLD:AA0368
 Mesochorus ocho[605][DHJP0030546]Nycterotis xylinoidesDHJ02[407[0n]]BOLD:AA0368
 Mesochorus ocho[606][DHJP0020354]Nystalea ocellata[655[3n]]BOLD:AA0368
 Mesochorus ununocero[607][DHJP0021779]Calydna sturmula[657[0n]]BOLD:ACE9622
 Mesochorus ununocero[608][DHJP0021759]Nystalea inchoans[660[0n]]BOLD:ACE9622
 Mesochorus ununocero[609][DHJP0020359]Nystalea marona[657[2n]]BOLD:ACE9622
 Mesochorus ununocero[610][DHJP0030759]Cephise nuspesez[631[0n]]BOLD:ACE9622
 Mesochorus ununocero[611][DHJP0020553]Nystalea marona[657[0n]]BOLD:ACE9622
 Mesochorus ununocero[612][DHJP0020427]Calydna sturmula[652[4n]]BOLD:ACE9622
 Mesochorus ununocero[613][DHJP0045500]gelJanzen01 Janzen28[658[0n]]BOLD:ACE9622
 Mesochorus ununocero[614][DHJP0020543]Hemiceras nigrescens[657[0n]]BOLD:ACE9622
 Mesochorus tres[615][DHJP0020356]Elasmia mandela[655[2n]]BOLD:AAA8075
 Mesochorus tres[616][DHJP0020353]Nystalea sylvieduranae[645[3n]]BOLD:AAA8075
 Mesochorus tres[617][DHJP0021726]Nystalea inchoans[657[0n]]BOLD:AAA8075
 Mesochorus tres[618][DHJP0020347]Nystalea torbjornekreml[656[0n]]BOLD:AAA8075
 Mesochorus tres[619][DHJP0020381]Nycterotis xylinoidesDHJ02[657[1n]]BOLD:AAA8075
 Mesochorus tres[620][DHJP0020389]Nystalea inchoans[657[1n]]BOLD:AAA8075
 Mesochorus tres[621][DHJP0020404]Nystalea ocellata[657[1n]]BOLD:AAA8075
 Mesochorus tres[622][DHJP0031145]Elasmia mandela[658[0n]]BOLD:AAA8075
 Mesochorus tres[623][DHJP0020395]Nystalea ebalea[656[3n]]BOLD:AAA8075
 Mesochorus tres[624][DHJP0020408]Nystalea torbjornekreml[656[1n]]BOLD:AAA8075
 Mesochorus tres[625][DHJP0020436]Nystalea marona[626[0n]]BOLD:AAA8075
 Mesochorus tres[626][DHJP0020392]Ilanassa rusticaDHJ05[657[0n]]BOLD:AAA8075
 Mesochorus tres[627][DHJP0030757]Nystalea ocellata[626[0n]]BOLD:AAA8075
 Mesochorus tres[628][DHJP0052942]Nystalea ebalea[658[0n]]BOLD:AAA8075
 Mesochorus tres[629][DHJP0065349]Nystalea ocellata[658[0n]]BOLD:AAA8075
 Mesochorus tres[630][DHJP0021722]Nystalea ocellata[657[0n]]BOLD:AAA8075
 Mesochorus tres[631][DHJP0041423]Nystalea ocellata[658[0n]]BOLD:AAA8075
 Mesochorus tres[632][DHJP0041411]Nystalea ocellata[658[0n]]BOLD:AAA8075
 Mesochorus Janzen02[633][FN662463]Mesochorus sp. DHJP0012200[657[0n]]BOLD:AAA8075
 Mesochorus tres[634][DHJP0020549]Elasmia mandela[657[0n]]BOLD:AAA8075
 Mesochorus tres[635][DHJP0021794]Nystalea ocellata[657[0n]]BOLD:AAA8075
 Mesochorus tres[636][DHJP0020881]Nystalea marona[658[0n]]BOLD:AAA8075
 Mesochorus tres[637][DHJP0021786]Nystalea romanmacayai[657[0n]]BOLD:AAA8075
 Mesochorus tres[638][DHJP0020411]Nystalea torbjornekreml[657[0n]]BOLD:AAA8075
 Mesochorus tres[639][DHJP0052944]Nystalea ebalea[658[0n]]BOLD:AAA8075
 Mesochorus tres[640][DHJP0021735]Nystalea ocellata[657[0n]]BOLD:AAA8075
 Mesochorus tres[641][DHJP0061653]Nystalea marona[658[0n]]BOLD:AAA8075
 Mesochorus tres[642][DHJP0056931]Nystalea ebalea[661[0n]]BOLD:AAA8075
 Mesochorus tres[643][DHJP0056934]Nystalea superciliosa[661[0n]]BOLD:AAA8075
 Mesochorus tres[644][DHJP0021771]Nystalea ocellata[657[0n]]BOLD:AAA8075
 Mesochorus tres[645][DHJP0021784]Tachuda discretaDHJ02[657[0n]]BOLD:AAA8075
 Mesochorus tres[646][DHJP0021789]Nystalea ocellata[654[0n]]BOLD:AAA8075
 Mesochorus tres[647][DHJP0021798]Nystalea ocellata[657[0n]]BOLD:AAA8075
 Mesochorus tres[648][DHJP0021799]Nystalea sylvieduranae[656[0n]]BOLD:AAA8075
 Mesochorus tres[649][DHJP0056557]Nystalea ebalea[658[0n]]BOLD:AAA8075
 Mesochorus tres[650][DHJP0020879]Nystalea marona[658[0n]]BOLD:AAA8075
 Mesochorus tres[651][DHJP0030543]Nycterotis xylinoidesDHJ02[658[0n]]BOLD:AAA8075
 Mesochorus tres[652][DHJP0030544]Nycterotis xylinoidesDHJ02[658[0n]]BOLD:AAA8075
 Mesochorus tres[653][DHJP0020412]Nystalea torbjornekreml[625[2n]]BOLD:AAA8075
 Mesochorus tres[654][DHJP0020355]Nystalea sylvieduranae[657[1n]]BOLD:AAA8075
 Mesochorus tres[655][DHJP0020406]Nystalea aequipars[657[1n]]BOLD:AAA8075
 Mesochorus tres[656][DHJP0020438]Nystalea marona[657[3n]]BOLD:AAA8075
 Mesochorus tres[657][DHJP0020380]Nystalea ebalea[657[2n]]BOLD:AAA8075
 Mesochorus tres[658][DHJP0012200]Nycterotis xylinoidesDHJ02[660[0n]]BOLD:AAA8075
 Mesochorus tres[659][BIOUG60839-A05]Malaise trap PL12-3F[652[0n]]BOLD:AAA8075
 Mesochorus tres[660][DHJP0020346]Elasmia mandela[656[0n]]BOLD:AAA8075
 Mesochorus tres[661][DHJP0020349]Elasmia mandela[656[0n]]BOLD:AAA8075
 Mesochorus tres[662][DHJP0020350]Nystalea torbjornekreml[656[0n]]BOLD:AAA8075
 Mesochorus tres[663][BIOUG59690-H09]Malaise trap PL12-5D[653[0n]]BOLD:AAA8075
 Mesochorus tres[664][BIOUG50592-F04]Malaise trap PL12-6B[656[0n]]BOLD:AAA8075
 Mesochorus tres[665][BIOUG55485-D05]Malaise trap PL12-1D[653[0n]]BOLD:AAA8075
 Mesochorus tres[666][BIOUG58937-E08]Malaise trap PL12-9E[653[0n]]BOLD:AAA8075
 Mesochorus tres[667][BIOUG44028-G04]Malaise trap PL12-3B[652[0n]]BOLD:AAA8075
 Mesochorus tres[668][DHJP0020410]Elasmia mandela[656[1n]]BOLD:AAA8075
 Mesochorus tres[669][DHJP0030545]Nycterotis xylinoidesDHJ02[658[0n]]BOLD:AAA8075
 Mesochorus tres[670][DHJP0020445]Nycterotis xylinoidesDHJ02[630[2n]]BOLD:AAA8075
 Mesochorus tres[671][DHJP0012187]Nystalea ocellata[568[0n]]BOLD:AAA8075
 Mesochorus tres[672][DHJP0030569]Nystalea ebalea[407[0n]]



Mesochorus uno[766]DHJP0021767Hylesia continua[631]0nBOLD:AAA6111
 Mesochorus uno[767]DHJP0021770Hylesia continua[631]0nBOLD:AAA6111
 Mesochorus uno[768]DHJP0021712Hylesia continua[636]0nBOLD:AAA6111
 Mesochorus uno[769]DHJP0020441Hylesia continua[657]2nBOLD:AAA6111
 Mesochorus uno[770]DHJP0021731Hylesia continua[635]0nBOLD:AAA6111
 Mesochorus uno[771]DHJP0021766Hylesia continua[635]0nBOLD:AAA6111
 Mesochorus uno[772]DHJP0020439Hylesia continua[647]1nBOLD:AAA6111
 Mesochorus uno[773]DHJP0020442Hylesia continua[647]1nBOLD:AAA6111
 Mesochorus uno[774]DHJP0020449Hylesia continua[657]4nBOLD:AAA6111
 Mesochorus uno[775]DHJP0021733Hylesia continua[657]0nBOLD:AAA6111
 Mesochorus uno[776]DHJP0021746Leucotmemis nexa[657]0nBOLD:AAA6111
 Mesochorus uno[777]DHJP0021747Hylesia continua[657]0nBOLD:AAA6111
 Mesochorus uno[778]DHJP0021760Hylesia continua[657]0nBOLD:AAA6111
 Mesochorus uno[779]DHJP0021763Hylesia continua[657]0nBOLD:AAA6111
 Mesochorus uno[780]DHJP0020700Hylesia aeneides[657]0nBOLD:AAA6111
 Mesochorus uno[781]DHJP0021707Hylesia continua[657]0nBOLD:AAA6111
 Mesochorus uno[782]DHJP0035140Leucotmemis nexa[658]0nBOLD:AAA6111
 Mesochorus uno[783]DHJP0020431Hylesia continua[657]0nBOLD:AAA6111
 Mesochorus uno[784]DHJP0020433Hylesia continua[657]0nBOLD:AAA6111
 Mesochorus uno[785]DHJP0020440Hylesia continua[657]0nBOLD:AAA6111
 Mesochorus uno[786]DHJP0035129Leucotmemis nexa[658]0nBOLD:AAA6111
 Mesochorus uno[787]DHJP0020867Hylesia continua[283]0n
 Mesochorus uno[788]DHJP0020444Hylesia continua[647]0nBOLD:AAA6111
 Mesochorus uno[789]DHJP0021732Hylesia continua[646]0nBOLD:AAA6111
 Mesochorus uno[790]DHJP0021730Hylesia continua[657]0nBOLD:AAA6111
 Mesochorus uno[791]DHJP0021729Hylesia continua[657]0nBOLD:AAA6111
 Mesochorus uno[792]DHJP0021725Hylesia continua[657]0nBOLD:AAA6111
 Mesochorus uno[793]DHJP0021706Hylesia continua[657]0nBOLD:AAA6111
 Mesochorus uno[794]DHJP0020877Hylesia continua[580]0nBOLD:AAA6111
 Mesochorus uno[795]DHJP0021719Hylesia continua[654]0nBOLD:AAA6111
 Mesochorus uno[796]DHJP0020362Hylesia continua[636]2nBOLD:AAA6111
 Mesochorus uno[797]DHJP0020363Hylesia continua[657]1nBOLD:AAA6111
 Mesochorus uno[798]DHJP0030797Hylesia continua[613]1nBOLD:AAA6111
 Mesochorus uno[799]DHJP0035128Leucotmemis nexa[658]0nBOLD:AAA6111
 Mesochorus uno[800]DHJP0035127Leucotmemis nexa[658]0nBOLD:AAA6111
 Mesochorus uno[801]DHJP0035132Leucotmemis nexa[658]0nBOLD:AAA6111
 Mesochorus uno[802]DHJP0035131Leucotmemis nexa[658]0nBOLD:AAA6111
 Mesochorus uno[803]DHJP0035133Leucotmemis nexa[658]0nBOLD:AAA6111
 Mesochorus uno[804]DHJP0035134Leucotmemis nexa[658]0nBOLD:AAA6111
 Mesochorus uno[805]DHJP0035136Leucotmemis nexa[658]0nBOLD:AAA6111
 Mesochorus uno[806]DHJP0020835Hylesia continua[658]0nBOLD:AAA6111
 Mesochorus uno[807]DHJP0020837Hylesia continua[658]0nBOLD:AAA6111
 Mesochorus uno[808]DHJP0020865Hylesia continua[658]0nBOLD:AAA6111
 Mesochorus uno[809]DHJP0020869Hylesia continua[658]0nBOLD:AAA6111
 Mesochorus uno[810]DHJP0020871Hylesia continua[658]0nBOLD:AAA6111
 Mesochorus uno[811]DHJP0020873Hylesia continua[658]0nBOLD:AAA6111
 Mesochorus uno[812]DHJP0020875Hylesia continua[658]0nBOLD:AAA6111
 Mesochorus uno[813]DHJP0030586Automeris postalbida[658]0nBOLD:AAA6111
 Mesochorus uno[814]DHJP0020450Hylesia continua[657]1nBOLD:AAA6111
 Mesochorus uno[815]DHJP0020429Hylesia continua[657]0nBOLD:AAA6111
 Mesochorus uno[816]DHJP0035138Leucotmemis nexa[658]0nBOLD:AAA6111
 Mesochorus uno[817]DHJP0035137Leucotmemis nexa[658]0nBOLD:AAA6111
 Mesochorus uno[818]DHJP0020364Hylesia continua[657]0nBOLD:AAA6111
 Mesochorus uno[819]DHJP0021724Hylesia continua[657]0nBOLD:AAA6111
 Mesochorus uno[820]DHJP0035139Leucotmemis nexa[658]0nBOLD:AAA6111
 Mesochorus cincodos[821]DHJP0038387Agaraea minuta[658]0nBOLD:AAAM1690
 Mesochorus doscuatro[822]DHJP0012198Isanthrene echemon[657]0nBOLD:AAE9748
 Mesochorus doscuatro[823]DHJP0012192Isanthrene echemon[657]0nBOLD:AAE9748
 Mesochorus doscuatro[824]DHJP0012193Isanthrene echemon[657]0nBOLD:AAE9748
 Mesochorus doscuatro[825]DHJP0012190Isanthrene echemon[660]0nBOLD:AAE9748
 Mesochorus dossiete[826]DHJP0030584Nycterotis xylinoidesDHJ02[658]0nBOLD:AAF0551
 Mesochorus dossiete[827]DHJP0020391Nycterotis xylinoidesDHJ02[659]0nBOLD:AAF0551
 Mesochorus dossiete[828]DHJP0030585Nycterotis xylinoidesDHJ02[658]0nBOLD:AAF0551
 Mesochorus unocuatrocuro[829]BIOUG54702-B11Malaise trap PL12-3D[653]0nBOLD:AEF4453
 Mesochorus unocuatrocuro[830]BIOUG61695-G04Malaise trap PL12-5F[656]0nBOLD:AEF1590
 Mesochorus unocuatrocuro[831]BIOUG59282-A04Malaise trap PL12-5E[654]0nBOLD:AEF1590
 Mesochorus unocuatrocuro[832]BIOUG60956-H08Malaise trap PL12-5E[652]0nBOLD:AEF1590
 Mesochorus unocuatrocuro[833]BIOUG61227-E06Malaise trap PL12-5E[655]0nBOLD:AEF1590
 Mesochorus unocuatrocuro[834]BIOUG61695-F05Malaise trap PL12-5F[655]0nBOLD:AEF1590
 Mesochorus unocuatrocuro[835]BIOUG61824-B11Malaise trap PL12-5F[653]0nBOLD:AEF1590
 Mesochorus unocuatrocuro[836]BIOUG59265-B02Malaise trap PL12-5E[653]0nBOLD:AEF1590
 Mesochorus unocuatrocuro[837]BIOUG59265-D01Malaise trap PL12-5E[655]0nBOLD:AEF1590
 Mesochorus unocuatrocuro[838]BIOUG58265-E01Malaise trap PL12-5D[655]0nBOLD:AEF1590
 Mesochorus unocuatrocuro[839]BIOUG61227-A04Malaise trap PL12-5E[644]0nBOLD:AEF1590
 Mesochorus unocuatrocuro[840]BIOUG61228-C03Malaise trap PL12-5E[640]0nBOLD:AEF1590
 Mesochorus unocuatrocuro[841]BIOUG61211-F10Malaise trap PL12-5E[640]0nBOLD:AEF1590
 Mesochorus unocerocho[842]DHJP0020820malaise trap[629]0nBOLD:ACE7768
 Mesochorus unocerocho[843]DHJP0020815malaise trap[658]0nBOLD:ACE7768
 Mesochorus unocerocho[844]DHJP0020813malaise trap[658]0nBOLD:ACE7768
 Mesochorus unocerocho[845]DHJP0060102hespJanzen01 Janzen55[658]0nBOLD:ACE7768
 Mesochorus unocerocho[846]DHJP0041532hespJanzen01 Janzen55[637]0nBOLD:ACE7768
 Mesochorus doscincinco[847]DHJP0020825malaise trap[537]0nBOLD:AAE9757
 Mesochorus doscincinco[848]DHJP0020833malaise trap[603]0nBOLD:AAE9757
 Mesochorus doscincinco[849]DHJP0020831malaise trap[658]0nBOLD:AAE9757
 Mesochorus doscincinco[850]DHJP0021750Semaecopus Janzen08[660]0nBOLD:AAE9757
 Mesochorus doscincinco[851]DHJP0020809malaise trap[277]0n
 Mesochorus cuatrocero[852]DHJP0062160Natada 02-SRNP-19195[658]0nBOLD:AAH2888
 Mesochorus cuatrocero[853]DHJP0037971Epiperola vaferella[658]0nBOLD:AAH2888
 Mesochorus cuatrocero[854]DHJP0021768Isochaetes dwagsiDHJ04[634]0nBOLD:AAH2888
 Mesochorus cuatrocero[855]DHJP0030755Natada 02-SRNP-19195[615]1nBOLD:AAH2888
 Mesochorus cuatroro[856]DHJP0020808malaise trap[584]0nBOLD:AAH3285
 Mesochorus cuatroro[857]DHJP0023692Epiperola vaferella[660]0nBOLD:AAH3285
 Mesochorus cuatroro[858]DHJP0040035Vipsophobetron davisii[658]0nBOLD:AAH3285
 Mesochorus cuatroro[859]DHJP0020554Vipsophobetron davisii[657]0nBOLD:AAH3285
 Mesochorus Janzen78[860]DHJP0035125immidJanzen01 Janzen16[658]0nBOLD:AAAX4052
 Mesochorus trescho[861]DHJP0035263immidJanzen01 Janzen35[658]0nBOLD:AAAG9508
 Mesochorus trescho[862]DHJP0021754immidJanzen01 Janzen15[660]0nBOLD:AAAG9508